

Architectural Designs ...selling quality house plans for over 30 years.

Plan W12516RS: Southwest Classic with Detached Casita



House plans are Copyright © 2009 by our architects and designers.

- This classic southwest contemporary home plan emphasizes indoor/outdoor living. From the detached casita suite to the huge outdoor living area, spa & pool area, this home plan is for those who live life to the fullest.
- The casita provides flexibility and privacy for guests. Or make it your home office.
- The great open living space is subtly defined by function. The space, 43' by 19'6" is open and fabulous for entertaining.
- The master suite is hotel chic and features a fireplace and sitting area, a great master bath and closet and its own private covered patio and courtyard.
- Look at all the outdoor living space, some of which is covered if by chance it is raining (indicated by a darker red). You'll love all the extra space you gain without the associated costs of a finished interior.

Style: Southwest

Total Living Area: 2558

Main Flr.: 2558

Covered Patio: 974 sq. ft.

Total Square Feet: 4,060 sq. ft.

Attached Garage: 2 Car, 528 sq. ft.

Bedrooms: 3, 4

Full Bathrooms: 3

Width: 73'4"

Depth: 88'

Maximum Ridge Height: 18'8"

Exterior Walls: 2x6

Ceiling Height:

Main Floor: 10'

Other: 15' Great Room' 16'8" Entry; 13' MBR

Standard Foundations: Slab, Crawl

Special Features: 1st Floor Master Suite, Den-Office-Library-Study, Court Yard, Corner Lot, PDF, Jack & Jill Bath

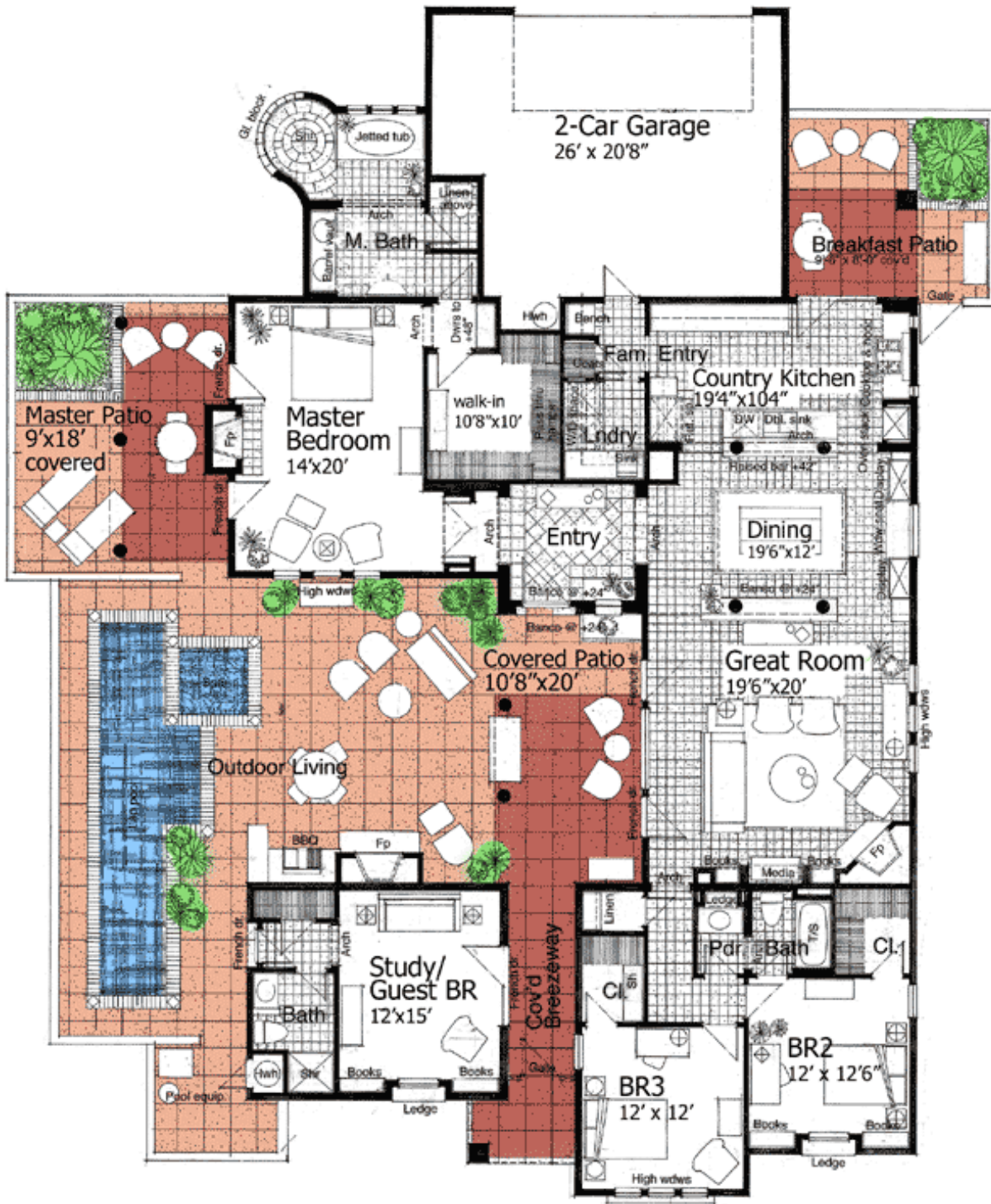
One Set
\$550

Five Sets
\$675

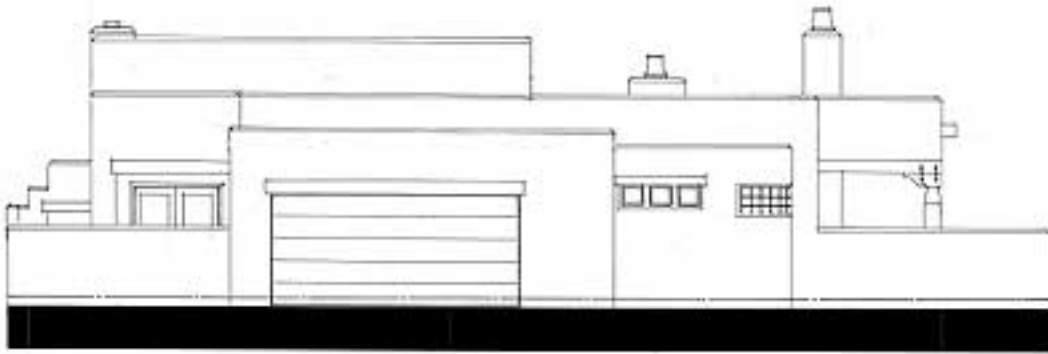
Eight Sets
\$750

Reproducible
\$775

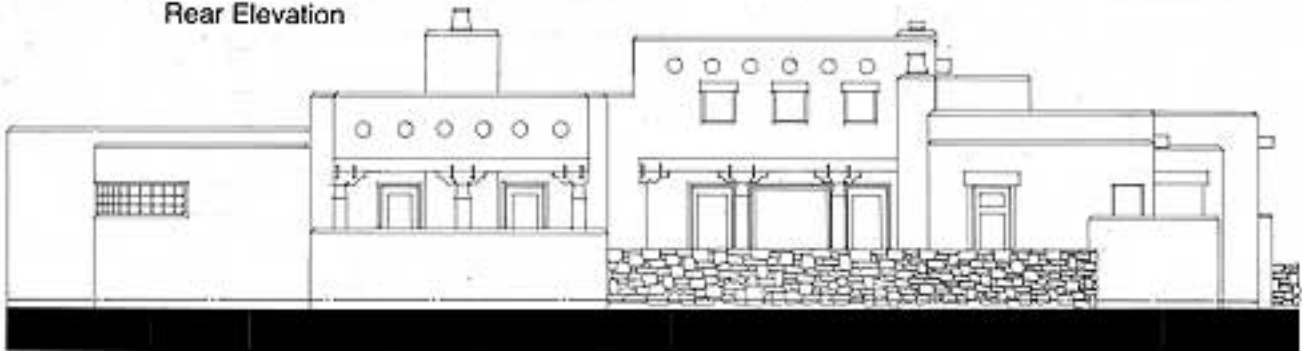
Main Level



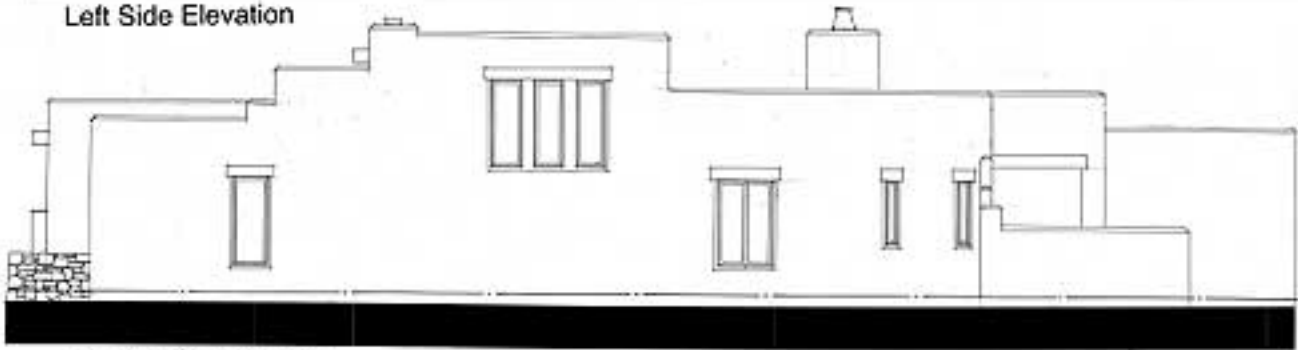
Sides/Rear



Rear Elevation



Left Side Elevation



Right Side Elevation