

Architectural Designs ...selling quality house plans for over 30 years.

Plan W59156ND: Creekside Cottage



House plans are Copyright © 2009 by our architects and designers.

- This cottage house plan features an 8' entry porch perfect for sitting outdoors and watching the time go by.
- The main living space created by the great room, with a stone hearth fireplace, dining room and kitchen is open and enlarged by the vaulted ceiling that is open to the loft above.
- The main bedroom has a full bath and access to the stacked washer and dryer and the rear grilling porch.
- Upstairs, there is a sleeping loft, another bedroom and bath and ample storage.
- Ceilings: 8' standard.
- Related Plan: Need an elevated version? See house plan 59961ND.

Style: Cottage, Country, Vacation

Total Living Area: 1400

Main Flr.: 948

2nd Flr.: 452

Front Porch: 256 sq. ft.

Rear Porch: 49 sq. ft.

Total Square Feet: 1,705 sq. ft.

Bedrooms: 2

Full Bathrooms: 2

Width: 32'

Depth: 42'

Maximum Ridge Height: 23'6"

Exterior Walls: 2x4

Ceiling Height:

Main Floor: 8'

2nd Floor: 8'

Standard Foundations: Slab, Crawl

Alternate Foundations: Walkout (\$250), Basement (\$250)

Special Features: PDF, CAD Available, Narrow Lot

One Set
\$515

Five Sets
\$560

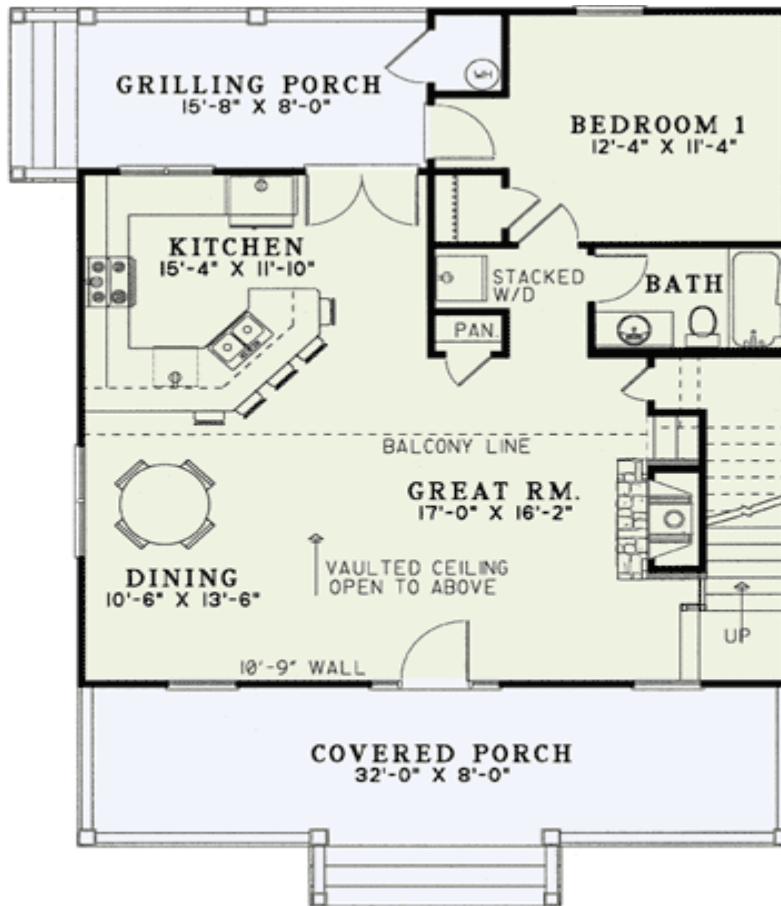
Eight Sets
\$585

Reproducible
\$700

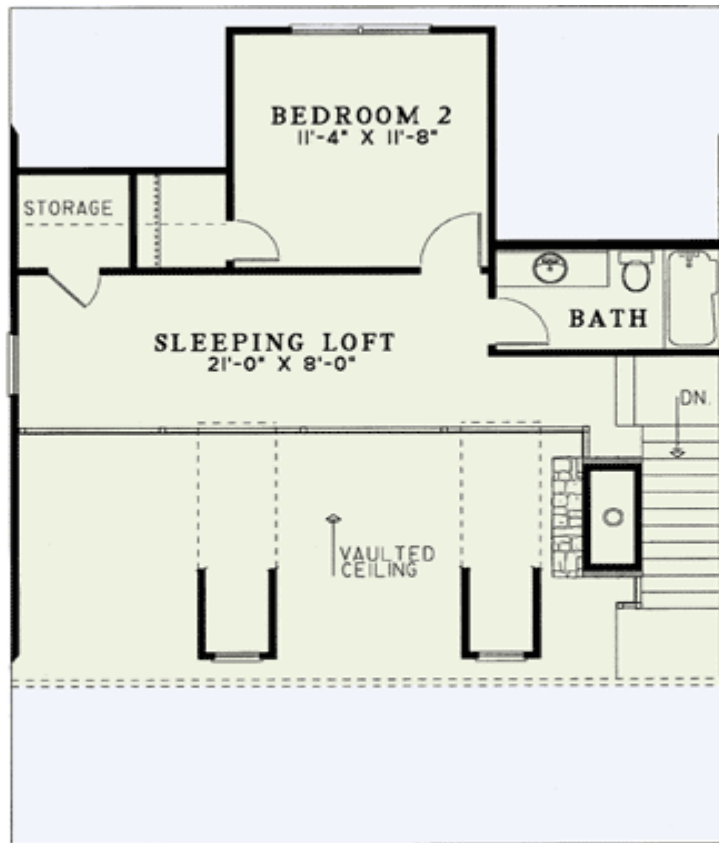
PDF File
\$700

CAD
\$1,200

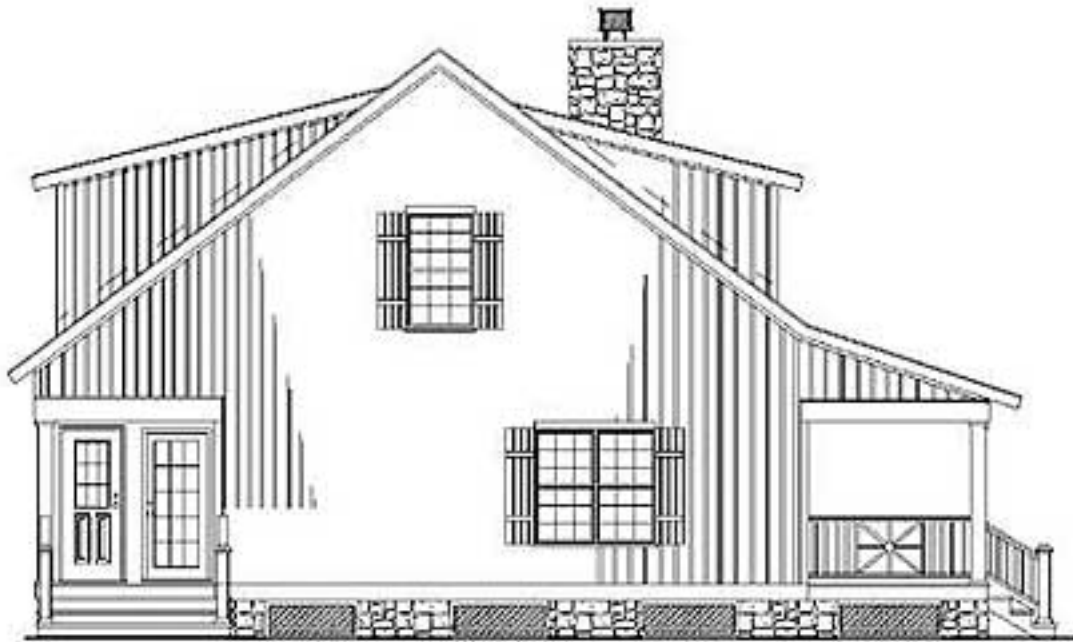
Main Level



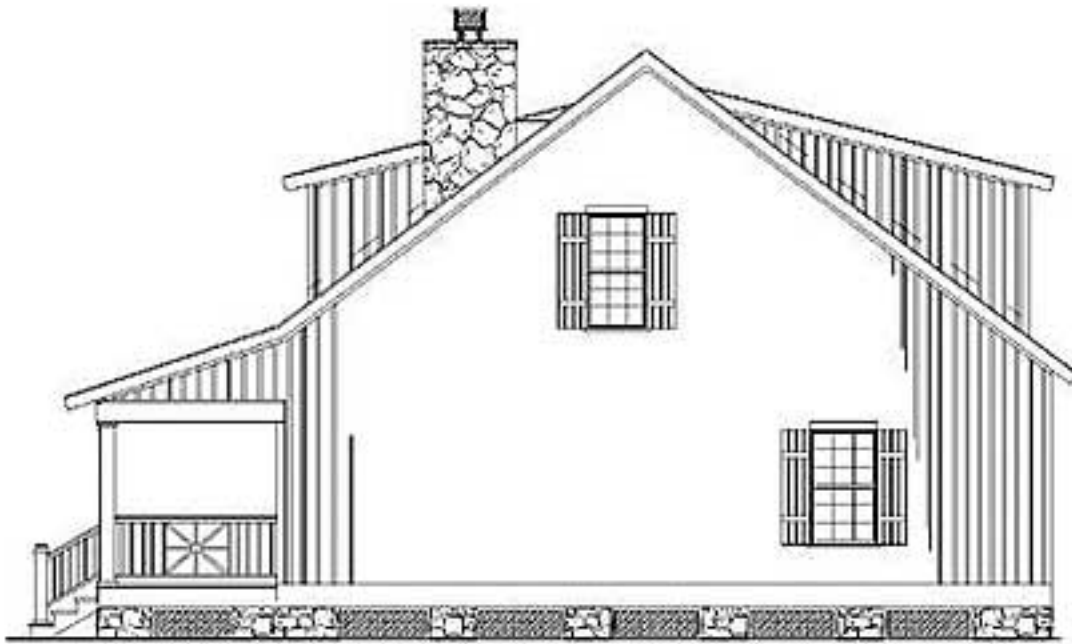
2nd Level



Left Side



Right Side



Rear View

