

Architectural Designs ...selling quality house plans for over 30 years.

Plan W59022ND: Traditional Exterior, Updated Interior



House plans are Copyright © 2009 by our architects and designers.

- This log home plan features decks on three sides and a grilling porch. The exterior may be typical of an original log home, but the interior is updated to meet today's demands.
- The living room ceiling is open above and in full view of the dining room and kitchen. This elaborate kitchen has a large walk-in pantry, a window above the sink and cabinets galore.
- A master suite is also located on the main level and has a private sun deck and spacious bathroom.
- Along with the loft area upstairs, which is open to below, there is a study/office, a bedroom and full bathroom with double vanities and a corner shower.
- Ceilings: 8' standard.
- Foundation: Basement, crawl space, daylight basement. Please specify your preference when ordering.

Style: Log, Mountain

Total Living Area: 1940

Main Flr.: 1287

2nd Flr.: 653

Front Porch: 196 sq. ft.

Rear Porch: 48 sq. ft.

Deck: 216 sq. ft.

Total Square Feet: 2,400 sq. ft.

Bedrooms: 2

Full Bathrooms: 2

Width: 50'

Depth: 46'

Exterior Walls: Log

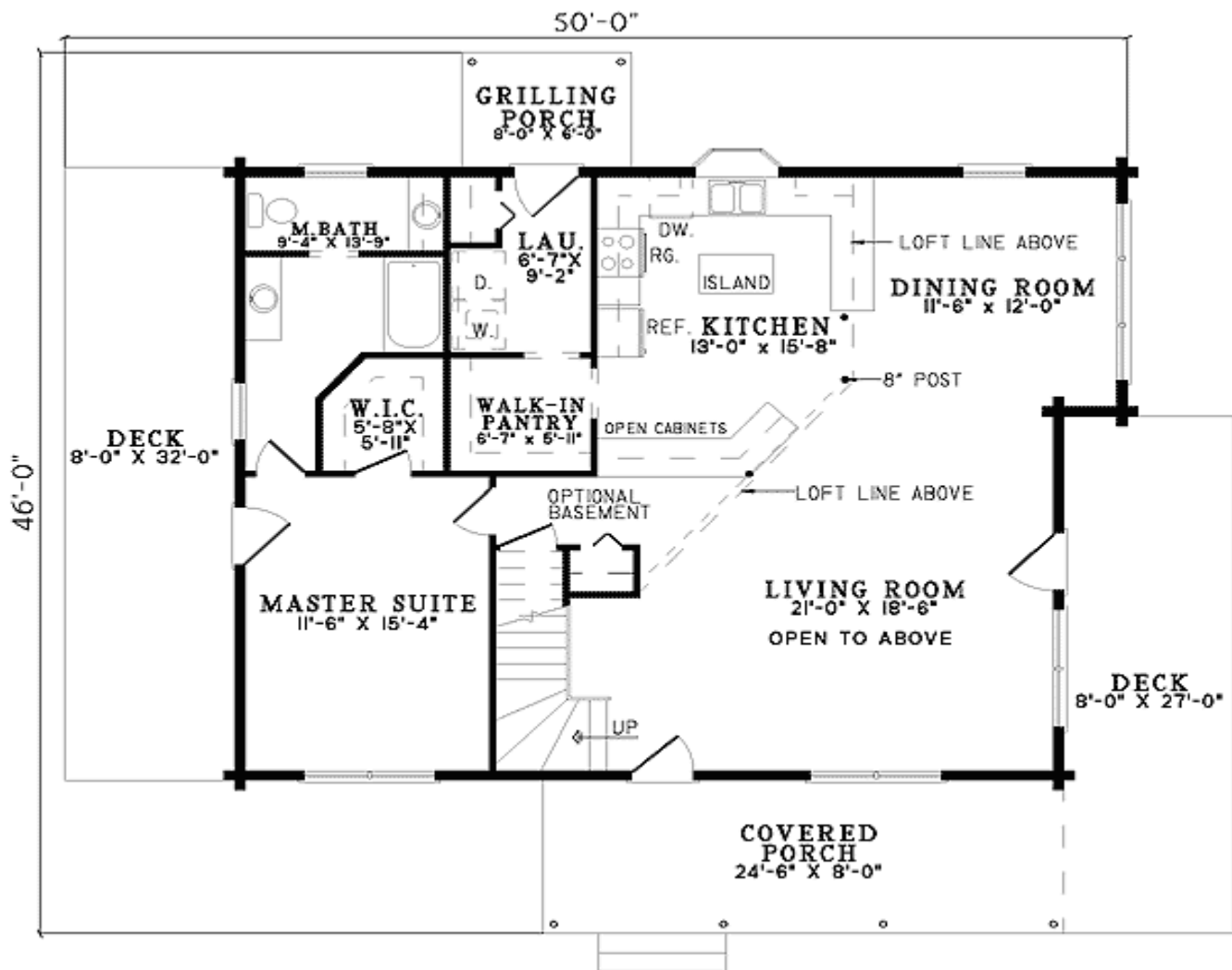
Ceiling Height:

Main Floor: 8'

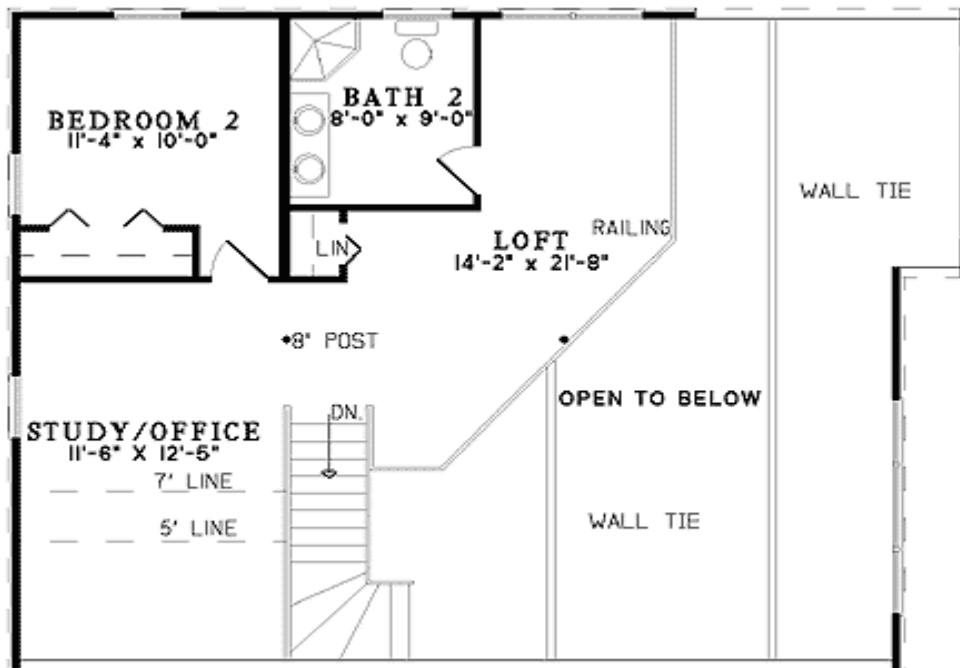
Other: Vaulted Great Room
Standard Foundations: Crawl
Alternate Foundations: Walkout (\$250), Basement (\$250)
Special Features: PDF, Narrow Lot, 1st Floor Master Suite

One Set	Five Sets	Eight Sets	Reproducible	PDF File	CAD
\$545	\$610	\$640	\$790	\$790	\$1,350

Main Level



2nd Level



Sides/Rear



REAR ELEVATION



LEFT ELEVATION



RIGHT ELEVATION