

Architectural Designs ...selling quality house plans for over 30 years.

Plan W6419HD: Palladian Windows with Options



House plans are Copyright © 2009 by our architects and designers.

- The time-honored popularity of the Palladian window is beautifully showcased in this 2,660 sq. ft. home plan. Ten-foot ceilings are standard with higher ceilings in the formal living and dining rooms.
- Accessing the foyer through double doors, views in back are visible from across the living room through the covered patio.
- Near the master suite, a den could serve as a guest room or fourth bedroom.
- In the magnificent master bedroom, a gently bowed soffit and stepped ceiling define the bed wall; floor-length windows frame the bed. The master bath includes a double vanity, soaking tub, separate shower and large walk-in closet.
- In the family area, the islanded U-shaped kitchen, with central island, walk-in pantry and built-in desk, merges with the breakfast nook and the family room. The family room contains a corner fireplace and lots of glass for bright, sunny living.
- Two secondary bedrooms share a hall bath.
- Related Plans: For alternate exteriors, see house plans 63093HD, 6353HD, 6310HD.
- Get a side-entry garage with house plan 63068HD and 6357HD (2,743 sq. ft.).
- Need more room? See house plan 6485HD (3,183 sq. ft.).

Style: Traditional

Total Living Area: 2660

Main Flr.: 2660

Total Square Feet: 3,187 sq. ft.

Attached Garage: 2 Car, 527 sq. ft.

Bedrooms: 4

Full Bathrooms: 3

Width: 66'4"

Depth: 74'4"

Maximum Ridge Height: 22'6"

Exterior Walls: 2x4

Ceiling Height:

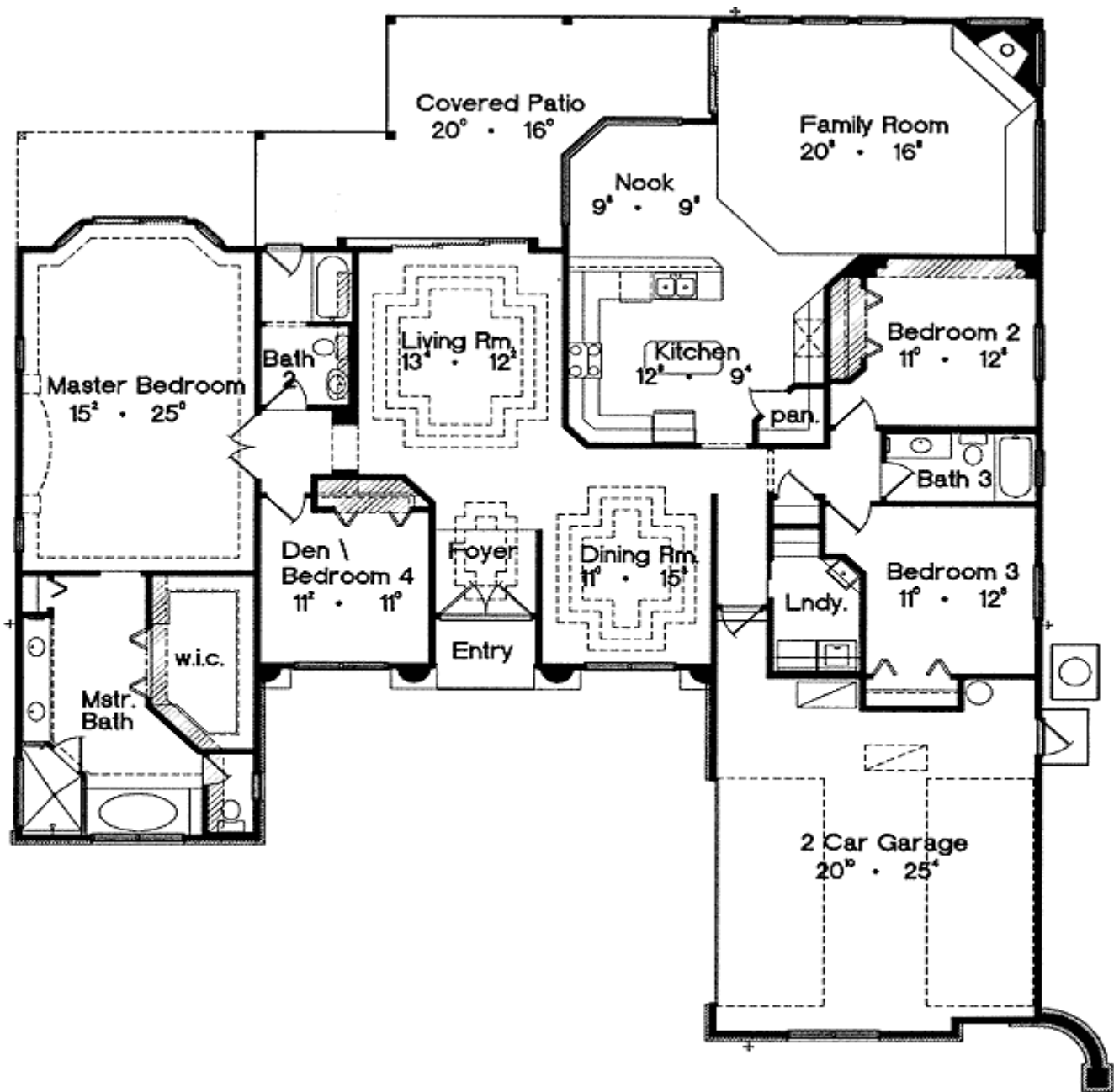
Standard Foundations: Slab

Alternate Foundations: Basement (\$675), Crawl (\$675)

Special Features: CAD Available, Photo Gallery, 1st Floor Master Suite, PDF

One Set	Five Sets	Eight Sets	Reproducible	PDF File	CAD
\$650	\$700	\$740	\$850	\$850	\$1,700

Main Level



Living Room



Dining Room



Kitchen



Master Bath

