

Architectural Designs ...selling quality house plans for over 30 years.

Plan W14004DT: Country Charm



House plans are Copyright © 2009 by our architects and designers.

- Vaulted ceilings highlight the living space of this attractive ranch home plan.
- The kitchen features a corner sink, pantry, eating bar, and a beautifully detailed plant ledge above the upper cabinets.
- A bayed window seat is the focus of the vaulted master bedroom which is enhanced by a private dressing area with a walk-in closet.
- Spacious bedroom #2 is secluded from the master for privacy.
- Covered front and rear porches provide additional protection from the weather.
- The utility room is conveniently located off of the 2-car garage.
- A huge family room draws you into the half daylight Basement, where two additional bedrooms share a bath.
- Plenty of storage space will help keep your belongings organized.

Style: Country, Ranch

Total Living Area: 1376

Main Flr.: 1376

Lower Level: 1065

Basement Unfinished: 239 sq. ft.

Total Square Feet: 3,265 sq. ft.

Attached Garage: 1 Car, 585 sq. ft.

Bedrooms: 2, 4

Full Bathrooms: 2

Width: 72'

Depth: 43'

Exterior Walls: 2x6

Ceiling Height:

Main Floor: 8'

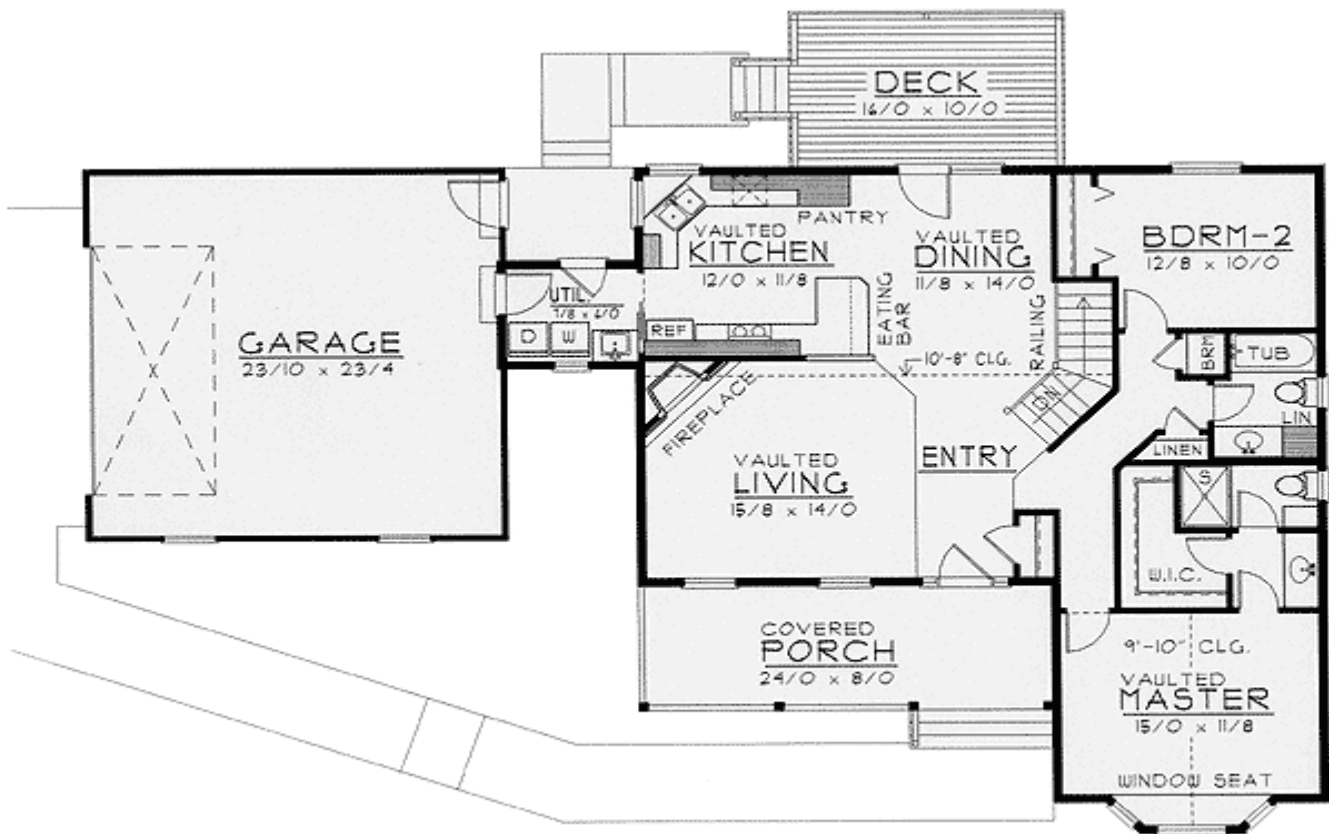
Standard Foundations: Daylight

Alternate Foundations: Slab (\$100), Crawl (\$100)

Special Features: 1st Floor Master Suite, CAD Available, Sloping Lot, Corner Lot

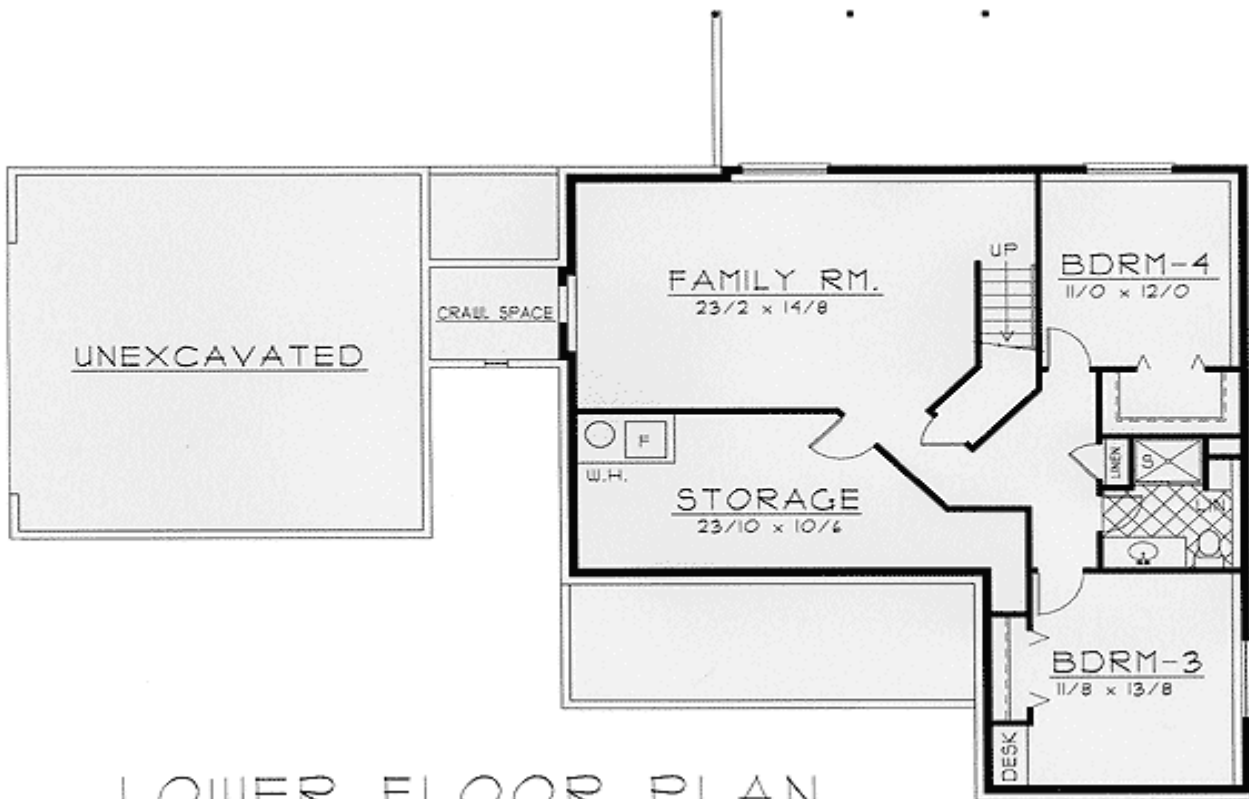
One Set	Five Sets	Eight Sets	Reproducible	CAD
\$480	\$560	\$620	\$880	\$1,120

Main Level



MAIN FLOOR PLAN

Lower Level



LOWER FLOOR PLAN

Rear View

