

# Architectural Designs ...selling quality house plans for over 30 years.

Plan W2245SL: Two Car Garage Apartment



House plans are Copyright © 2009 by our architects and designers.

- This 2-car garage apartment plan will compliment many traditional houses. Designed for storage of two cars, the garage has 9' ceilings and two 9'x7' overhead doors.
- Interior stairs lead to the upper level. Large windows allow natural light to brighten the great room and dining area.
- The apartment includes an efficient compact kitchen.
- Related Plans: Build in reverse with 2242SL.
- For a smaller version, see 2251SL (840 sq. ft.).
- Get a side-entry garage with 2288SL (8/40 sq. ft.).

Style: Carriage, Garage

Total Living Area: 701

2nd Flr.: 701

Total Square Feet: 1,674 sq. ft.

Attached Garage: 2 Car, 843 sq. ft.

Bedrooms: 1

Full Bathrooms: 1

Width: 31'

Depth: 28'

Maximum Ridge Height: 28'

Exterior Walls: 2x4

Optional Exterior Walls: 2x6 \$75

Ceiling Height:

Main Floor: 9'

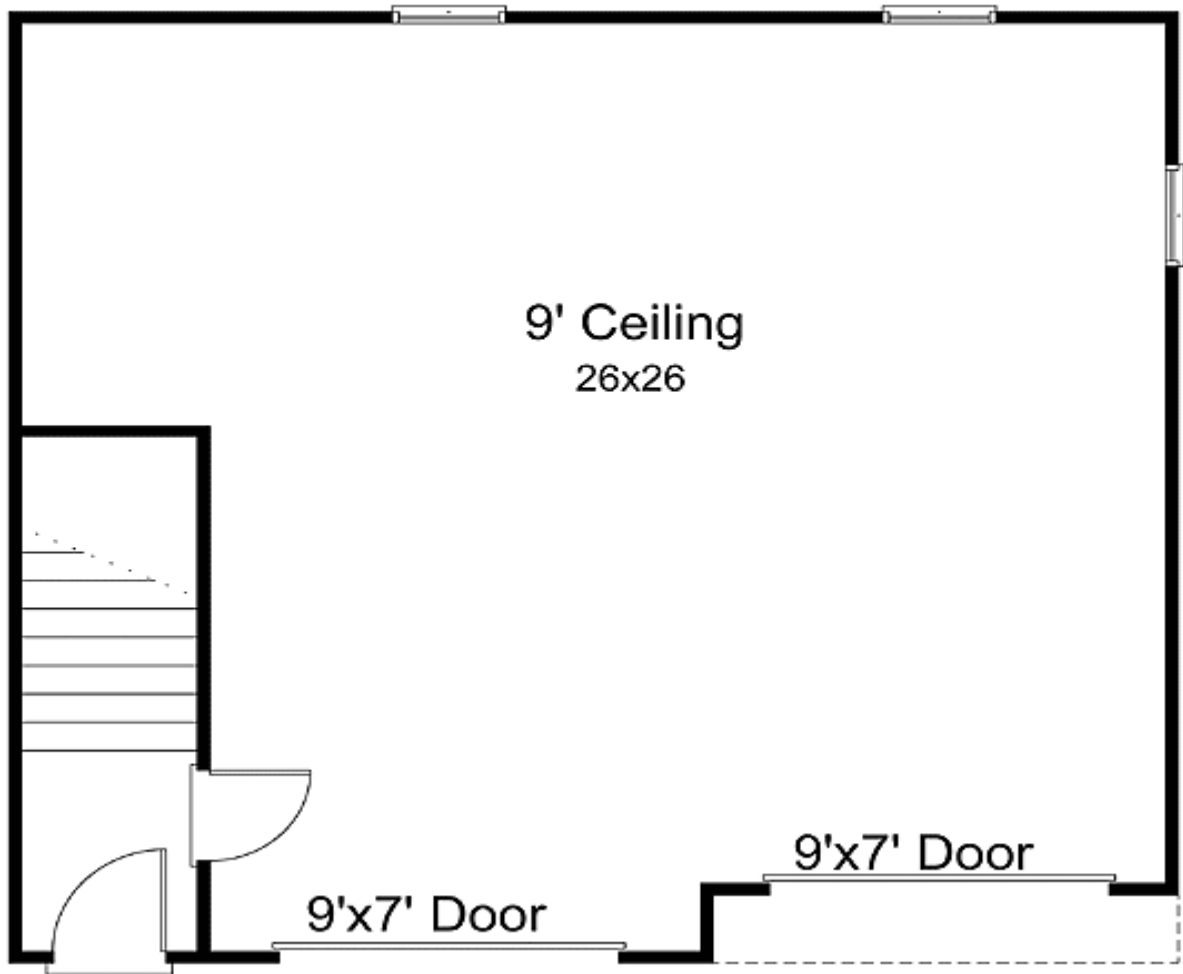
2nd Floor: 8'

Standard Foundations: Slab

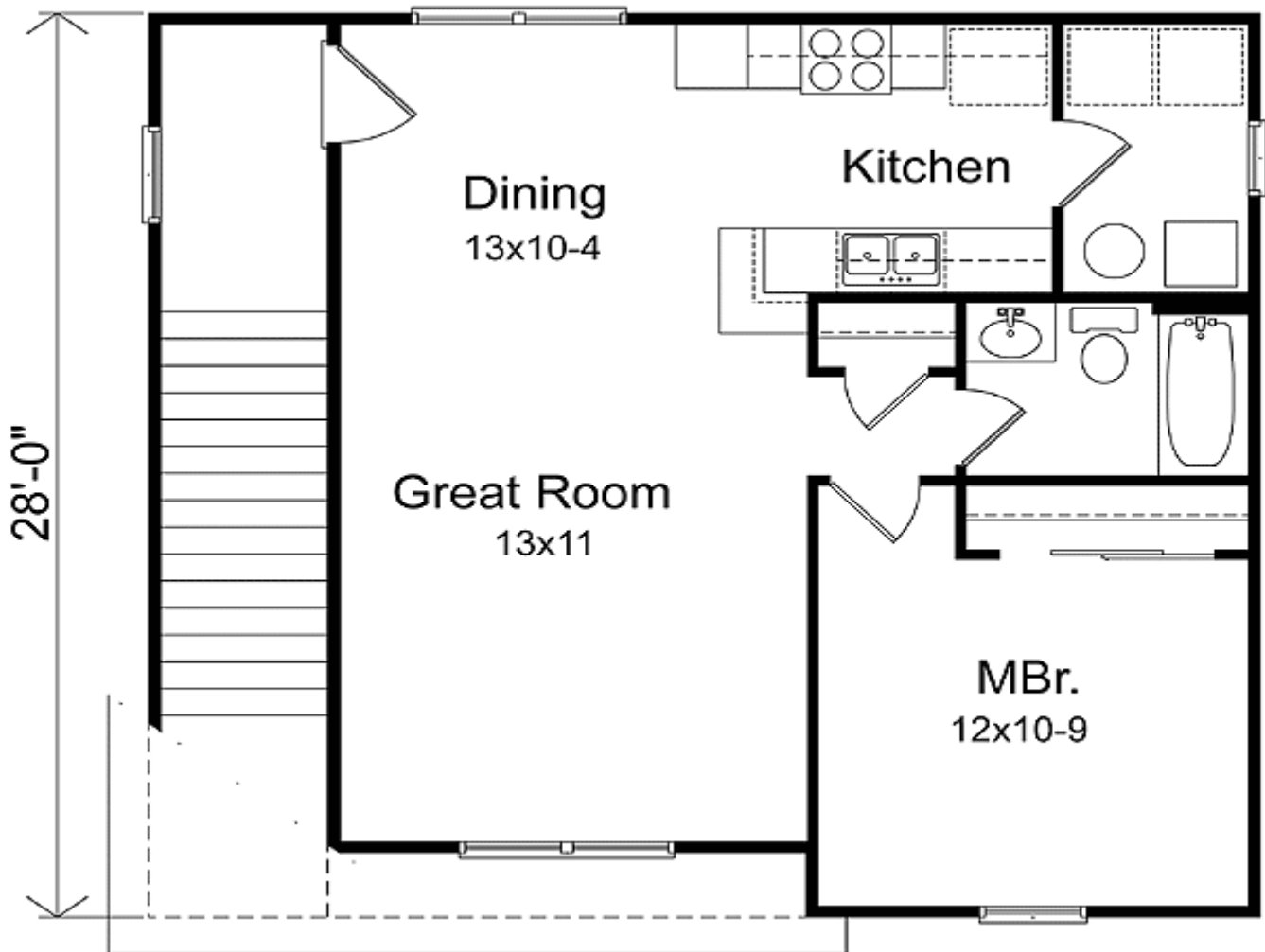
Special Features: PDF, Narrow Lot, CAD Available

One Set	Five Sets	Eight Sets	Reproducible	PDF File	CAD
\$250	\$340	\$385	\$450	\$450	\$550

Main Level



2nd Level



## Sides/Rear

