

# Architectural Designs ...selling quality house plans for over 30 years.

Plan W85016MS: Blockbuster Upslope Front-View Design



House plans are Copyright © 2009 by our architects and designers.

- This is simply a blockbuster design for an uphill front-view lot. The balanced and pleasing Prairie style is matched with the large comfortable and fully-developed floor plan features.
- Pay close attention to the big great room with front facing deck and adjoining kitchen and dining room.
- Upstairs is a commanding master suite with the best view and all the luxury you would expect in a high-end design.

Style: Prairie Style, Vacation

Total Living Area: 3407

Main Flr.: 1969

2nd Flr.: 1438

Bonus: 450 sq. ft.

Total Square Feet: 4,587 sq. ft.

Attached Garage: 3 Car, 730 sq. ft.

Bedrooms: 4

Full Bathrooms: 4

Width: 61'6"

Depth: 40'2"

Ceiling Height:

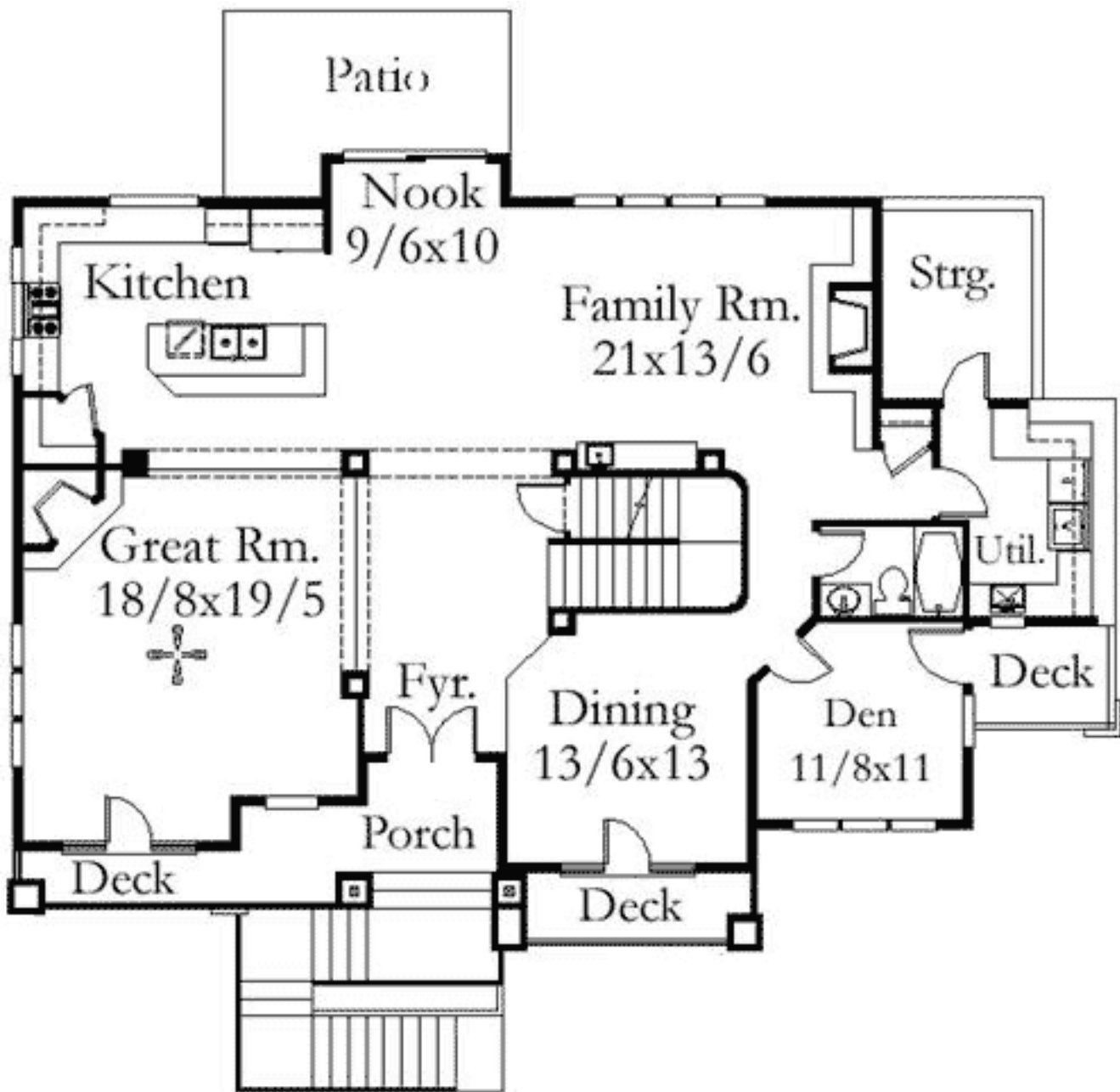
Other: 2-Story Foyer & Family Room

Standard Foundations: Basement

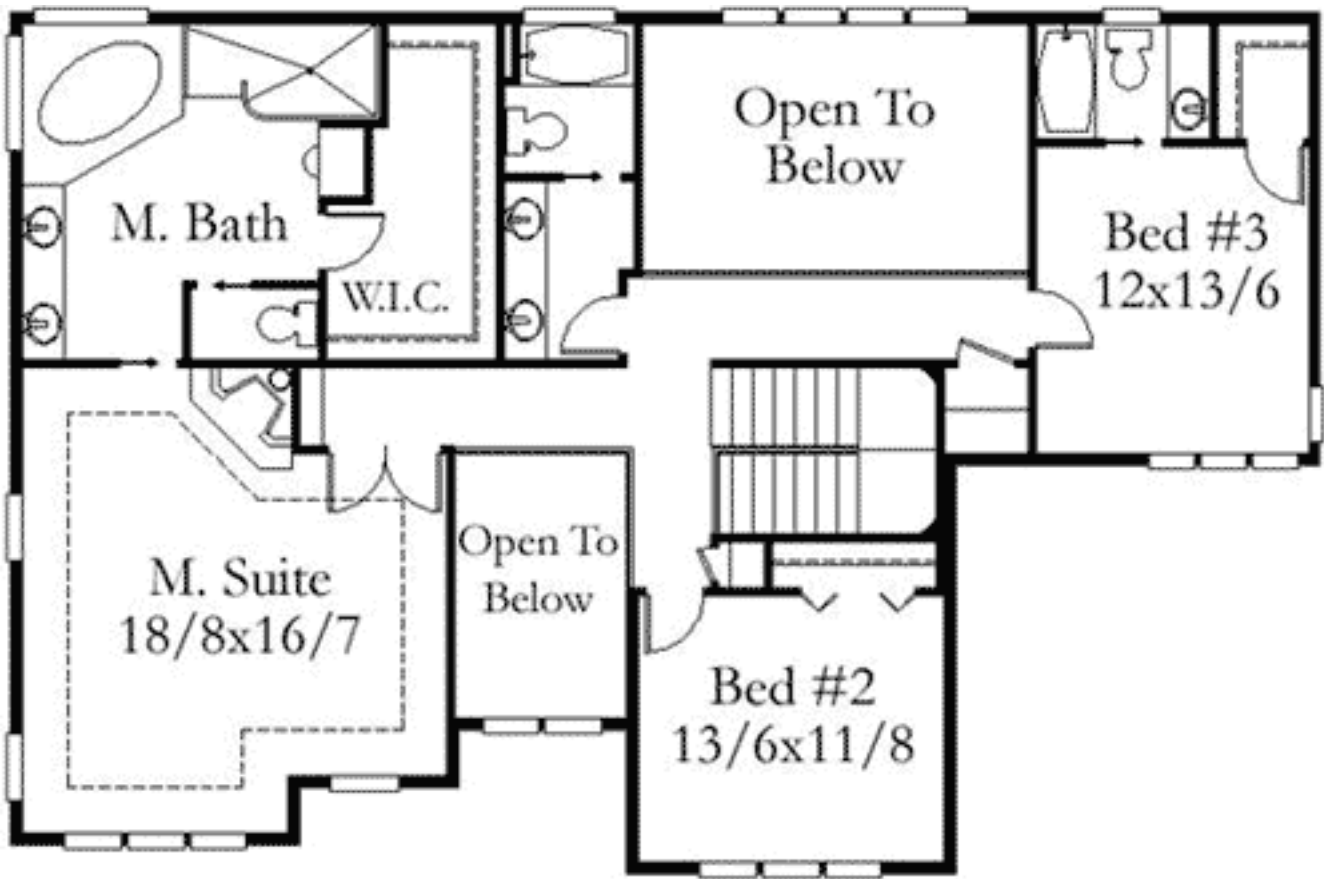
Special Features: PDF, Sloping Lot, Drive Under Garage, Bonus Room, CAD Available, Den-Office-Library-Study

One Set	Five Sets	Eight Sets	Reproducible	PDF File	CAD
\$852	\$992	\$1,082	\$1,192	\$1,192	\$1,363

## Main Level



2nd Level



Lower Level

