

Plan W35042GH: American Cottage Style



House plans are Copyright © 2009 by our architects and designers.

- An all brick main structure, beaded wood siding option on the rear elevation, a beautifully-detailed front entry and a box bay window with a copper roof distinguish the exterior of this beautiful American Cottage style house.
- On the first floor note the giant two-story great room with fireplace and entertainment center, a large open kitchen and breakfast room, both with bay windows, and a generous master bedroom suite.
- The high-vaulted master bedroom with a giant walk-through closet, boasts a luxurious octagonal master bath with large shower, spa tub, private toilet, and separate sinks.
- Upstairs there are two other bedrooms, each with its own bath, a loft/study and a large storage attic. An optional bonus room above the garage is available.
- Foundation: full basement.

Style: Contemporary, Metric

Total Living Area: 3284

Main Flr.: 1642

Lower Level: 1642

Rear Porch: 168 sq. ft.

Entry: 81 sq. ft.

Attic: 360 sq. ft.

Total Square Feet: 4,729 sq. ft.

Attached Garage: 2 Car, 836 sq. ft.

Bedrooms: 2

Full Bathrooms: 2

Half Bathrooms: 1

Width: 69'

Depth: 64'6"

Maximum Ridge Height: 32'1"

Exterior Walls: ICF

Ceiling Height:

Main Floor: 9'

2nd Floor: 9'

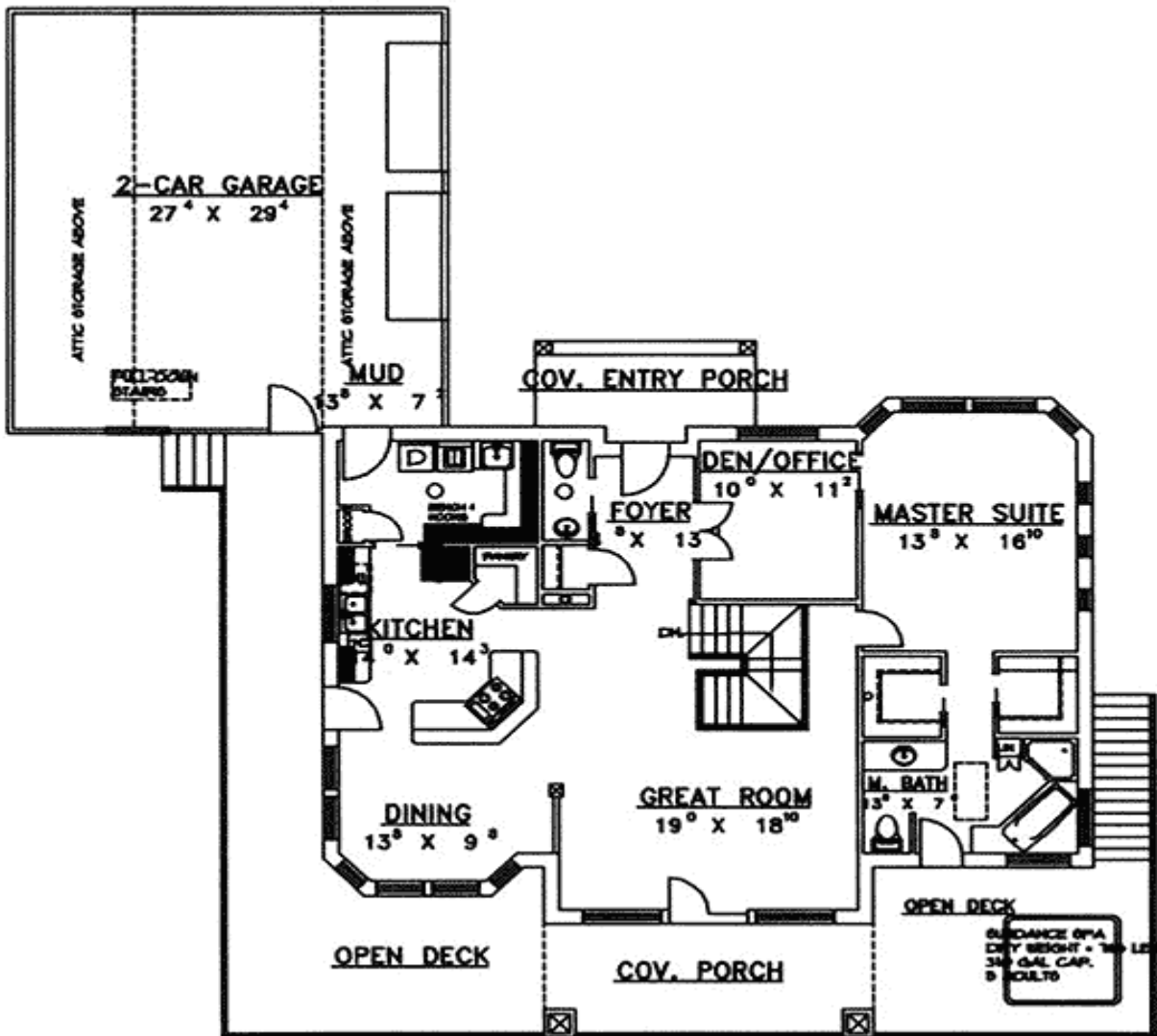
Other: 17'8" Great Room

Standard Foundations: Daylight

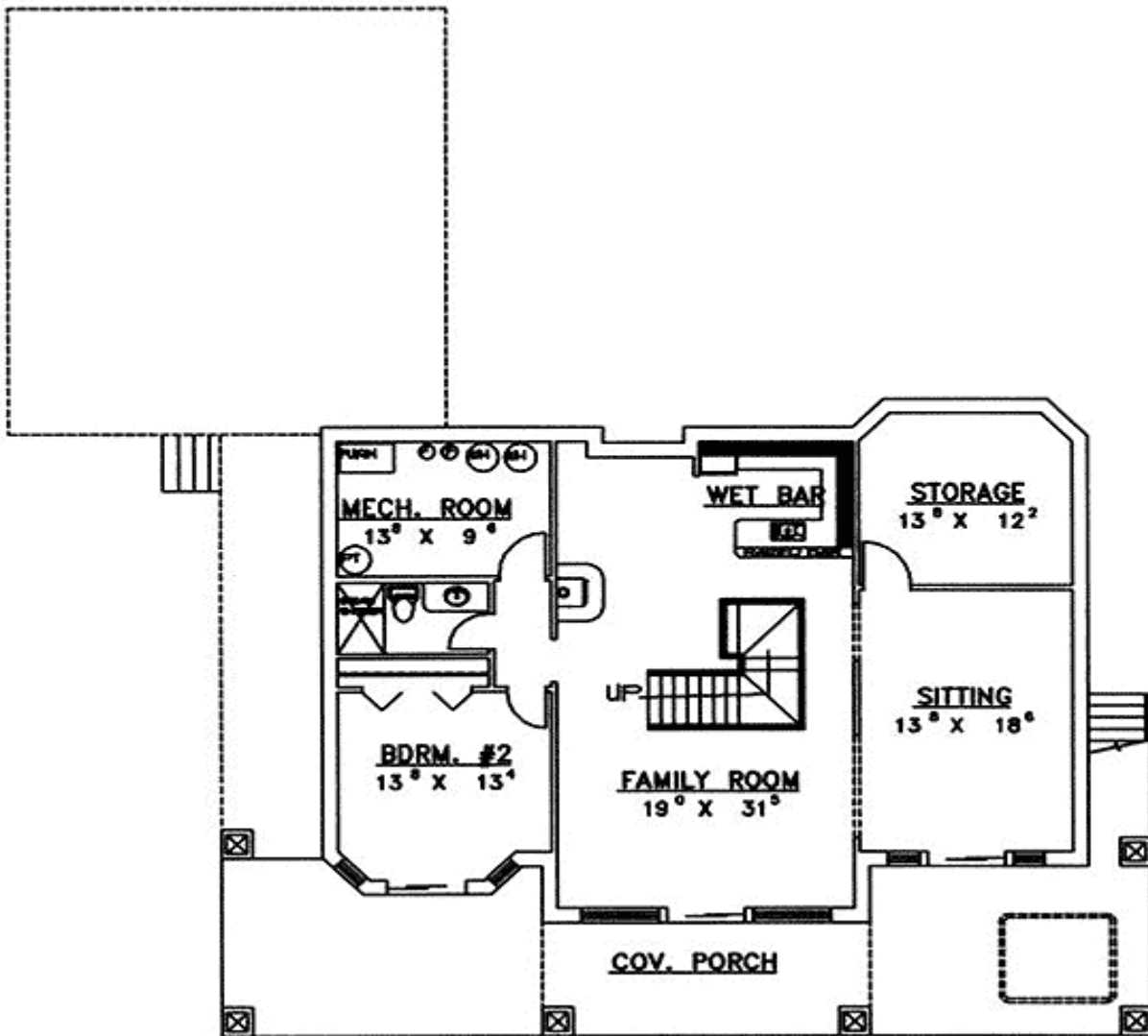
Special Features: PDF, CAD Available, Sloping Lot, 1st Floor Master Suite, Den-Office-Library-Study, Wrap Around Porch

Five Sets	Eight Sets	Reproducible	PDF File	CAD
\$725	\$820	\$750	\$900	\$900

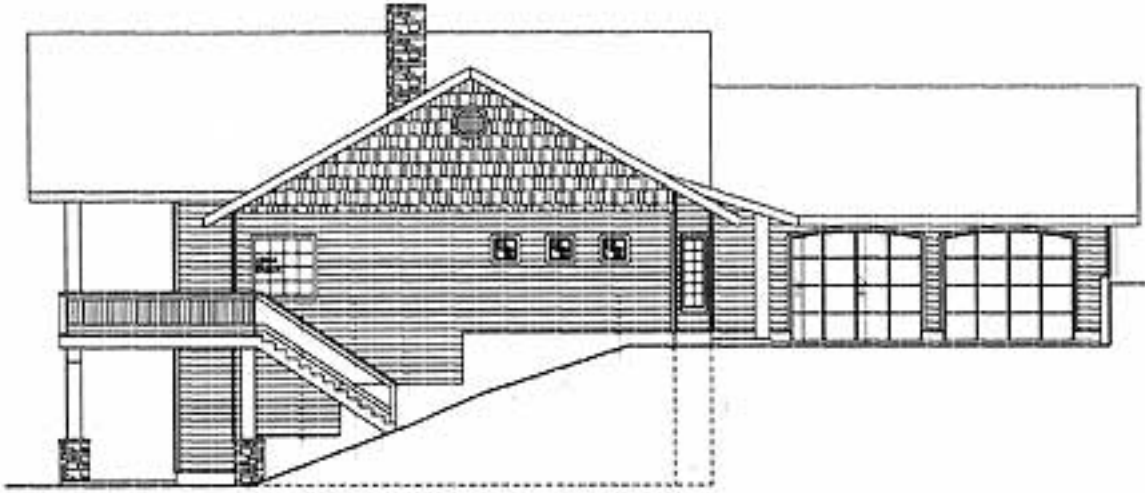
Main Level



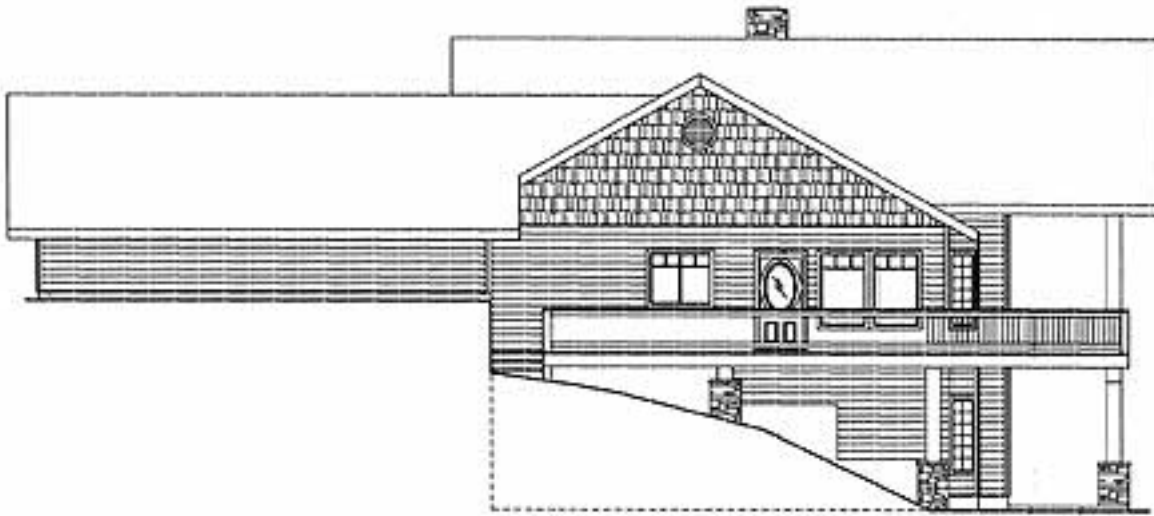
2nd Level



Left Side



Right Side



Rear View

