

# Architectural Designs ...selling quality house plans for over 30 years.

Plan W59145ND: Stately Historical Home Plan



House plans are Copyright © 2009 by our architects and designers.

- Exterior details on this historical home plan add character to this stately, symmetrical design. Upon entering the foyer, French doors lead to an optional study where privacy awaits and beautiful antique furniture can be showcased.
- While the formal dining room enhanced with elegant columns leads to the well-equipped kitchen.
- The breakfast room separates the master suite quarters from the additional bedrooms and has an optional basement stairway next to the garage entry.
- Retire to your master suite full of amenities, treat yourself to a soak in the corner whirlpool tub and afterwards enjoy private access to the rear-grilling porch for late night stargazing.

Style: Ranch

Total Living Area: 2246

Main Flr.: 2246

Front Porch: 243 sq. ft.

Rear Porch: 260 sq. ft.

Total Square Feet: 3,167 sq. ft.

Attached Garage: 2 Car, 418 sq. ft.

Bedrooms: 4

Full Bathrooms: 2

Width: 66'

Depth: 63'8"

Maximum Ridge Height: 21'6"

Exterior Walls: 2x4

Ceiling Height:

Main Floor: 9'

Standard Foundations: Slab, Crawl

Alternate Foundations: Walkout (\$250), Basement (\$250)

Special Features: PDF, CAD Available

One Set  
\$575

Five Sets  
\$660

Eight Sets  
\$695

Reproducible  
\$880

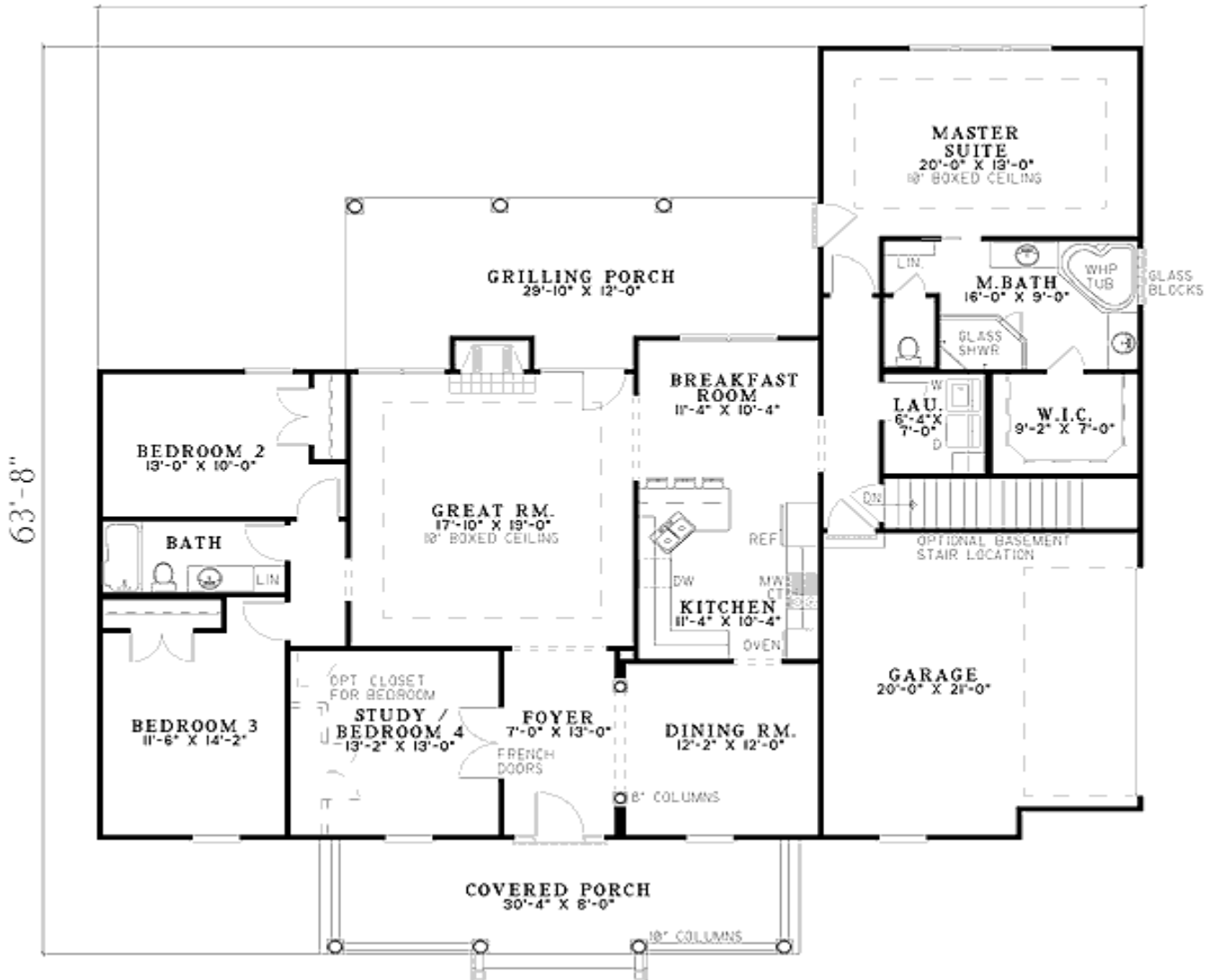
PDF File  
\$880

CAD  
\$1,500

# Architectural Designs ...selling quality house plans for over 30 years.

Main Level

66'-0"



Architectural Designs :: 57 Danbury Road :: Wilton, CT 06897

USA & Canada 1-800-854-7852 or 1-877-229-2447 :: International 262-521-4596

Fax 1-203-761-8600 :: Email: [info@architecturaldesigns.com](mailto:info@architecturaldesigns.com)