

# Architectural Designs ...selling quality house plans for over 30 years.

Plan W35262GH



House plans are Copyright © 2009 by our architects and designers.

Style: Metric, Victorian

Total Living Area: 2983

Main Flr.: 1148

2nd Flr.: 1164

Total Square Feet: 2,888 sq. ft.

Attached Garage: 2 Car, 576 sq. ft.

Bedrooms: 2

Full Bathrooms: 3

Half Bathrooms: 1

Width: 67'

Depth: 58'

Maximum Ridge Height: 21'2"

Exterior Walls: ICF

Ceiling Height:

Main Floor: 9'

2nd Floor: 9'

Standard Foundations: Combo Basement-Crawl

Special Features: MBR Sitting Area, PDF, CAD Available

Five Sets  
\$725

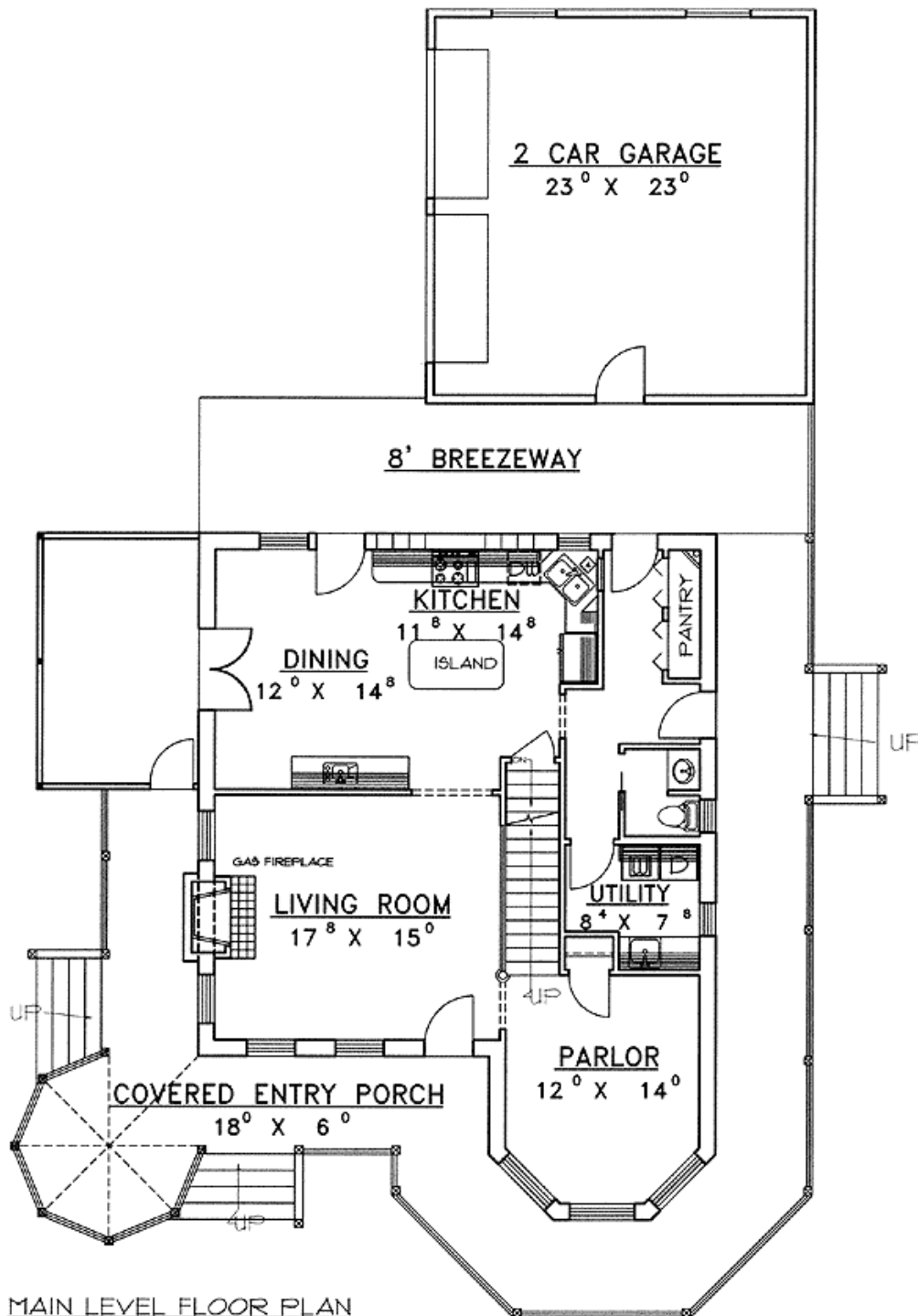
Eight Sets  
\$820

Reproducible  
\$750

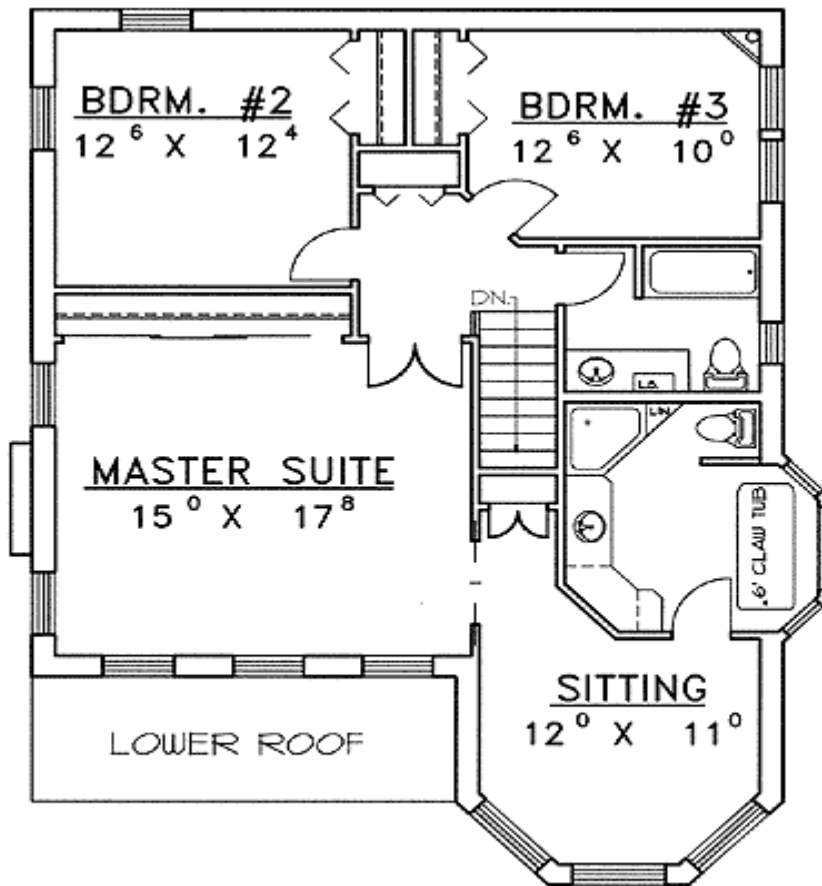
PDF File  
\$900

CAD  
\$900

## Main Level

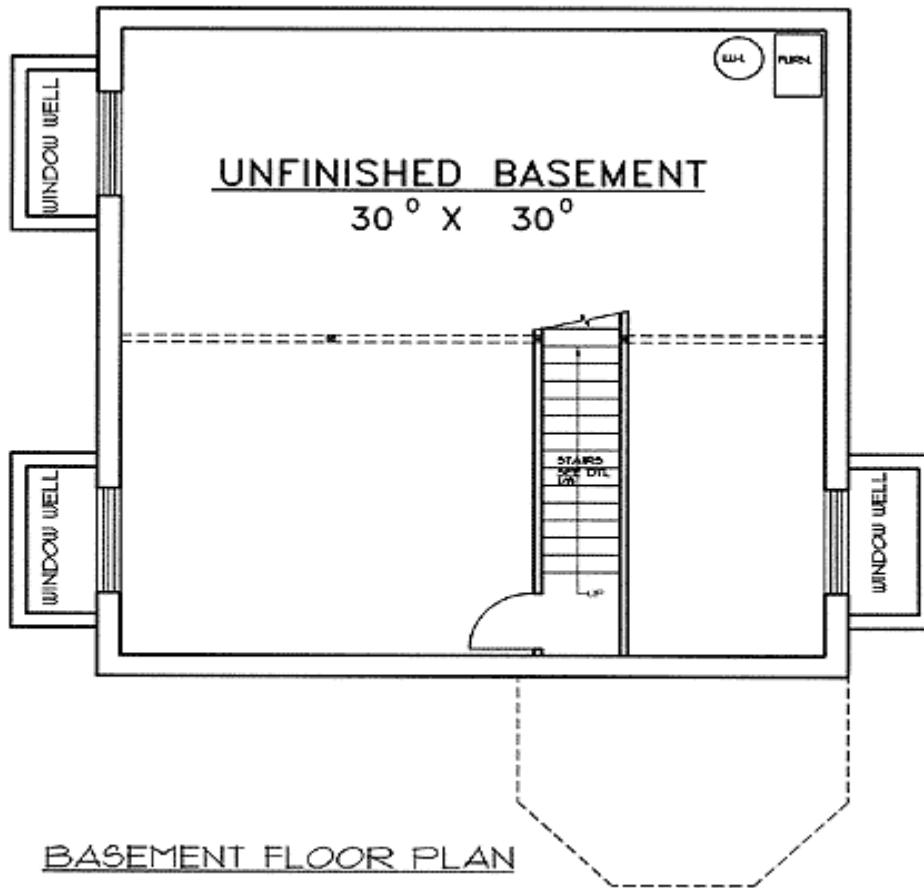


2nd Level



UPPER LEVEL FLOOR PLAN

## Lower Level



# Architectural Designs ...selling quality house plans for over 30 years.

Elevation #2

