

# Architectural Designs ...selling quality house plans for over 30 years.

Plan W21425DR: World-Class Views



House plans are Copyright © 2009 by our architects and designers.

- Bright, trim, contemporary units, occupying 953 sq.ft., are just what young couples and those in their Golden years are looking for.
- An entry hall with coat closet adds a touch of formality while the family room with fireplace delivers the charm.
- Two bedrooms and a full bath provide personal privacy and sleep comfort.

Style: Canadian, Metric, Multi-Family

Total Living Area: 7624

Main Flr.: 1906

2nd Flr.: 1906

3rd Flr.: 1906

Lower Level: 1906

Total Square Feet: 7,624 sq. ft.

Bedrooms: 2

Full Bathrooms: 1

Width: 58'

Depth: 4'

Maximum Ridge Height: 41'1"

Exterior Walls: 2x6

Ceiling Height:

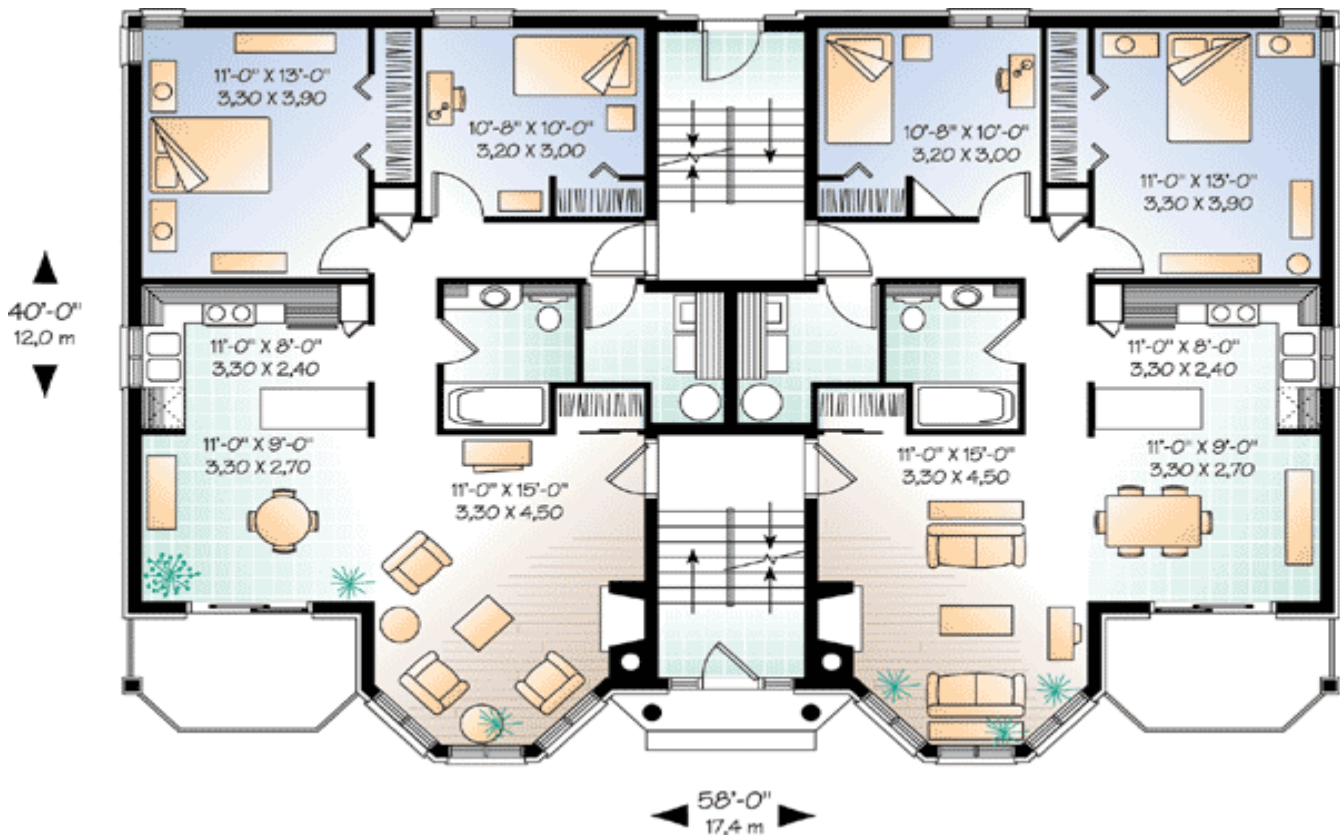
Standard Foundations: Basement

Alternate Foundations: Slab (\$295), Crawl (\$295)

Special Features: CAD Available, PDF

One Set	Five Sets	Eight Sets	Reproducible	PDF File	CAD
\$1,099	\$1,139	\$1,169	\$1,349	\$1,349	\$2,040

## Main Level



Rear View

