

Architectural Designs ...selling quality house plans for over 30 years.

Plan W3088D: Charming Gazebo



House plans are Copyright © 2009 by our architects and designers.

- This charming home with a gazebo at the front wrap-around porch, works well on a wide or corner lot.
- All rear-facing rooms are brightened by light through walls of windows. A lofty cathedral ceiling soars to 18'6" in the living room.
- Complete with a cooktop island, a walk-in pantry and eating bar, the kitchen is open to the living and dining rooms. A sunroom and an office/morning room complete the living area.
- The master suite features a bay window in the bedroom and a walk-in closet in the bath. With an optional door off the entry, bedroom three could serve as a study.
- Ceilings: 9' standard.
- Foundation options: basement, slab or crawl space. Specify when ordering.

Style: Country, Farmhouse, Victorian

Total Living Area: 2267

Main Flr.: 2267

Basement Unfinished: 2,267 sq. ft.

Bonus: 466 sq. ft.

Front Porch: 455 sq. ft.

Rear Porch: 396 sq. ft.

Total Square Feet: 6,665 sq. ft.

Detached Garage: 3 Car, 814 sq. ft.

Bedrooms: 3

Full Bathrooms: 2

Half Bathrooms: 1

Width: 65'7"

Depth: 107'3"

Maximum Ridge Height: 25'

Exterior Walls: 2x6

Ceiling Height:

Main Floor: 9'

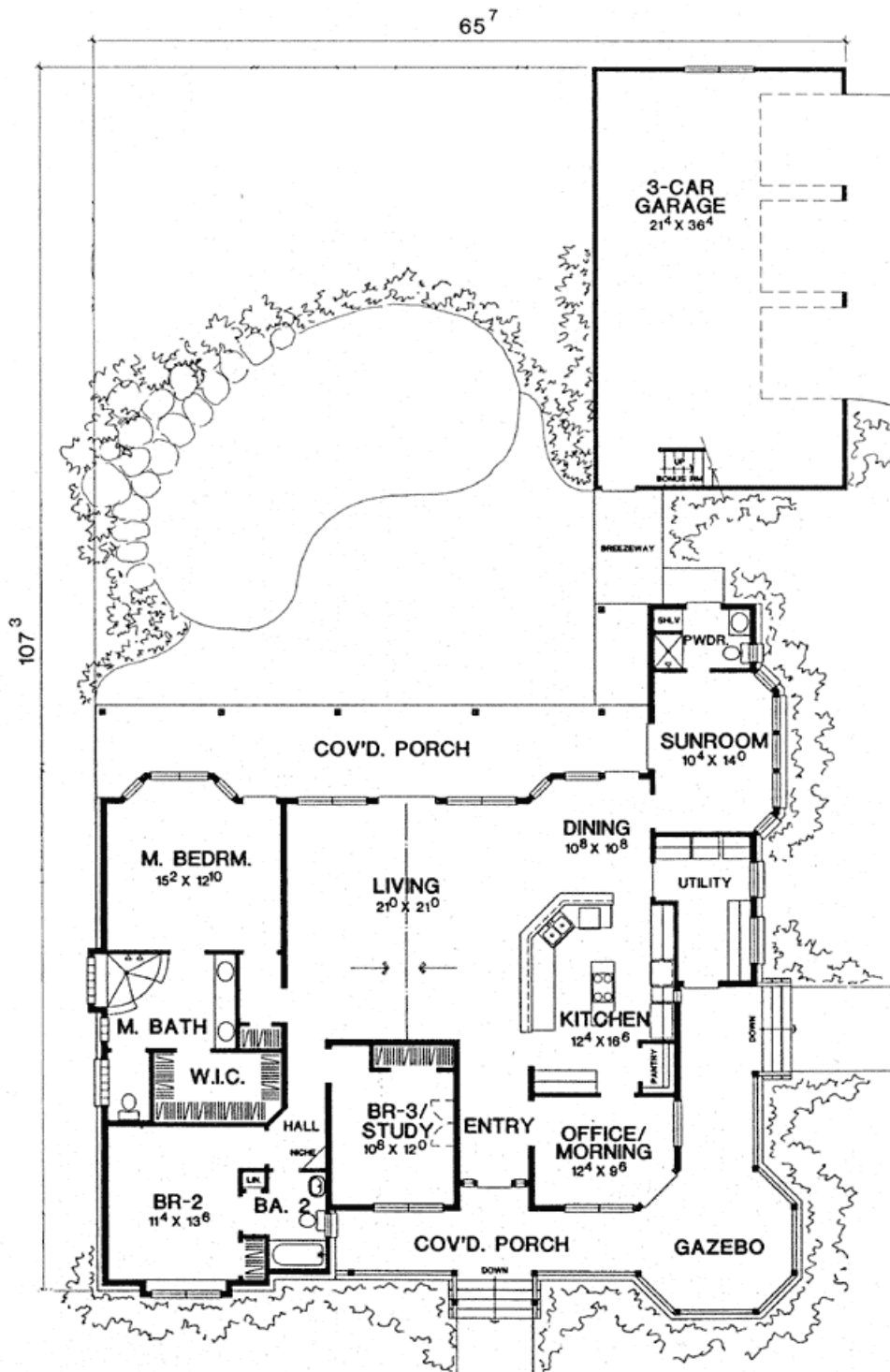
Other: 18'6" Cathedral Living Room

Standard Foundations: Slab, Basement, Crawl

Special Features: Den-Office-Library-Study, Corner Lot, CAD Available, Bonus Room, 1st Floor Master Suite

| | | | | |
|---------|-----------|------------|--------------|---------|
| One Set | Five Sets | Eight Sets | Reproducible | CAD |
| \$665 | \$740 | \$810 | \$995 | \$2,270 |

Main Level



Sides/Rear



REAR ELEVATION



LEFT ELEVATION



RIGHT ELEVATION