

# Architectural Designs ...selling quality house plans for over 30 years.

Plan W48002FM: Private Parking Courtyard House Plan



House plans are Copyright © 2009 by our architects and designers.

- Related Plans: Need less room? See house plan 48128FM (3,355 sq. ft.).
- Need more room? See house plan 48014FM (4,182 sq. ft.) and 48000FM (4,237 sq. ft.).
- Have something even more grand in mind? See house plan 48266FM (6,274 sq. ft.).

Style: European, Luxury

Total Living Area: 3769

Main Flr.: 2742

2nd Flr.: 1027

Total Square Feet: 4,393 sq. ft.

Attached Garage: 3 Car, 624 sq. ft.

Bedrooms: 4

Full Bathrooms: 4

Half Bathrooms: 1

Width: 82'4"

Depth: 85'4"

Maximum Ridge Height: 35'

Exterior Walls: 2x4

Ceiling Height:

Main Floor: 10'

2nd Floor: 9'

Other: 9' Guest Room; 6'-9' Sloped BR#2 & 3"

Standard Foundations: Slab, Basement, Crawl

Special Features: 1st Floor Master Suite

One Set

\$900

Five Sets

\$980

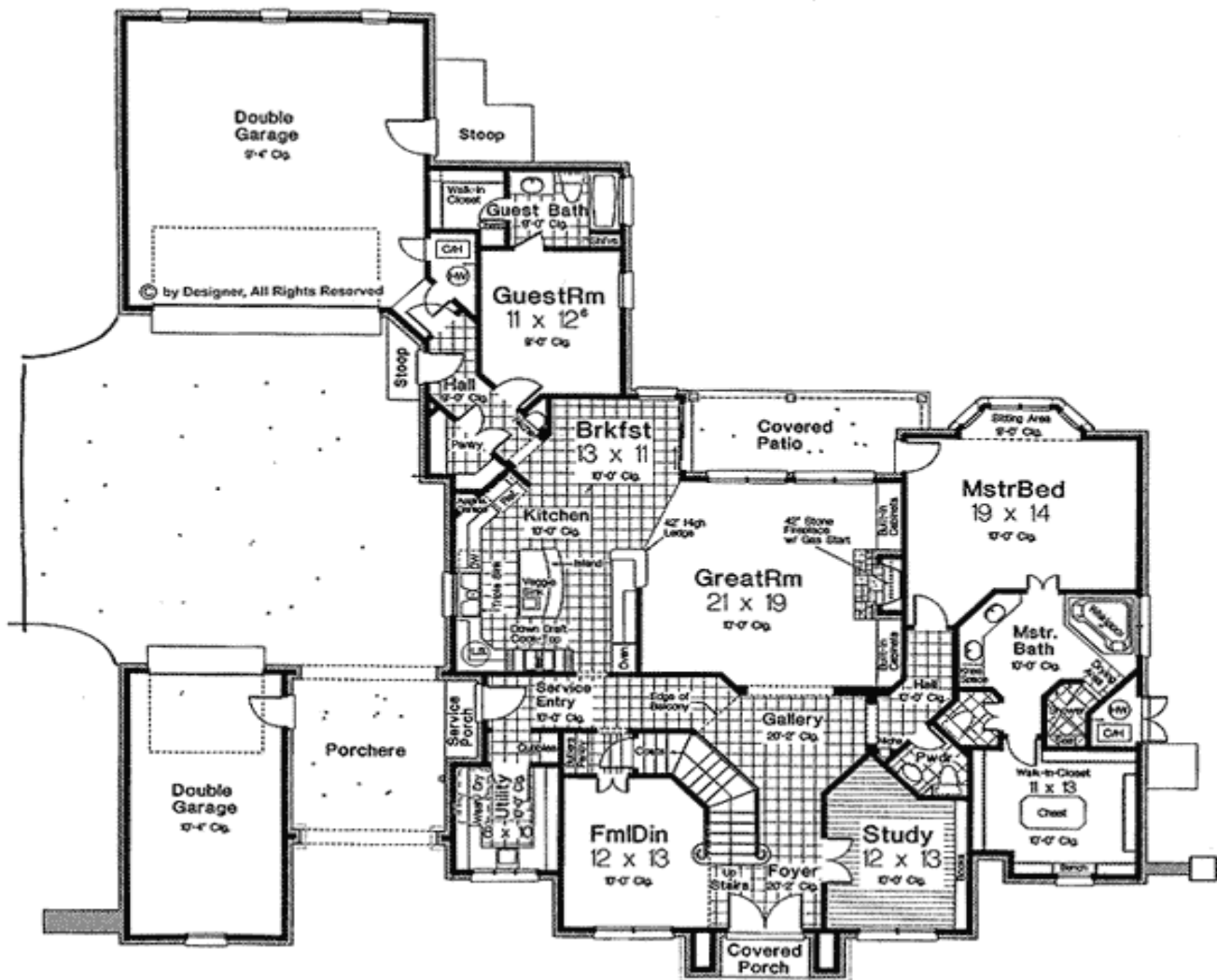
Eight Sets

\$1,050

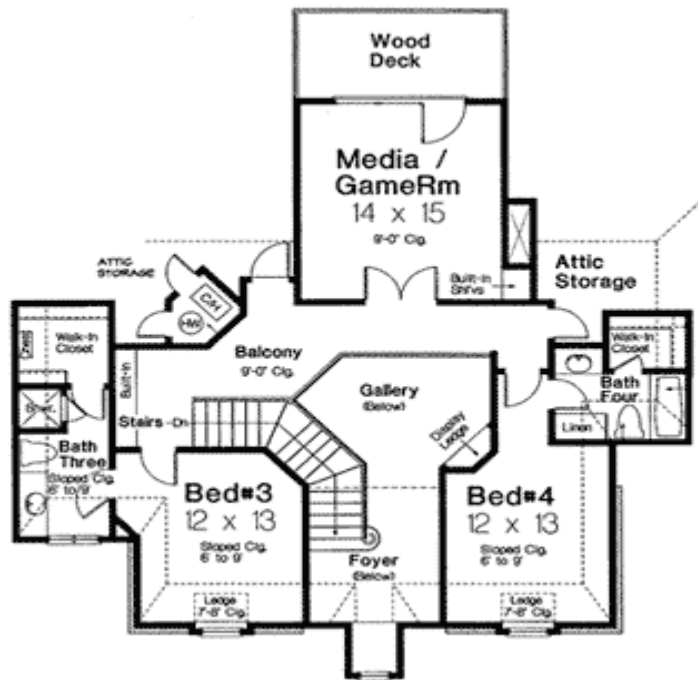
Reproducible

\$1,250

## Main Level



## 2nd Level



Rear View

