

Architectural Designs ...selling quality house plans for over 30 years.

Plan W12419NE: Coastal New England Cottage



House plans are Copyright © 2009 by our architects and designers.

- This cottage is extremely efficient and economical to build and would be great as a single family home or as a series of cute cottages at a resort type setting.
- The downstairs is for relaxing and entertaining. You can even spill out onto the front porch to watch the sunset if you do it right.
- Two bedrooms and a bath are tucked away on the second floor.
- A one-car garage is attractively attached and is accessed through the living room so you'll stay dry on those rainy days.
- Related Plans: Don't need a garage? See house plan 12418NE.

Style: Cottage, Craftsman, Northwest

Total Living Area: 1084

Main Flr.: 572

2nd Flr.: 512

Front Porch: 168 sq. ft.

Total Square Feet: 1,252 sq. ft.

Attached Garage: 1 Car, 0 sq. ft.

Bedrooms: 2

Full Bathrooms: 1

Half Bathrooms: 1

Width: 36'

Depth: 34'

Exterior Walls: 2x6

Ceiling Height:

Main Floor: 8'

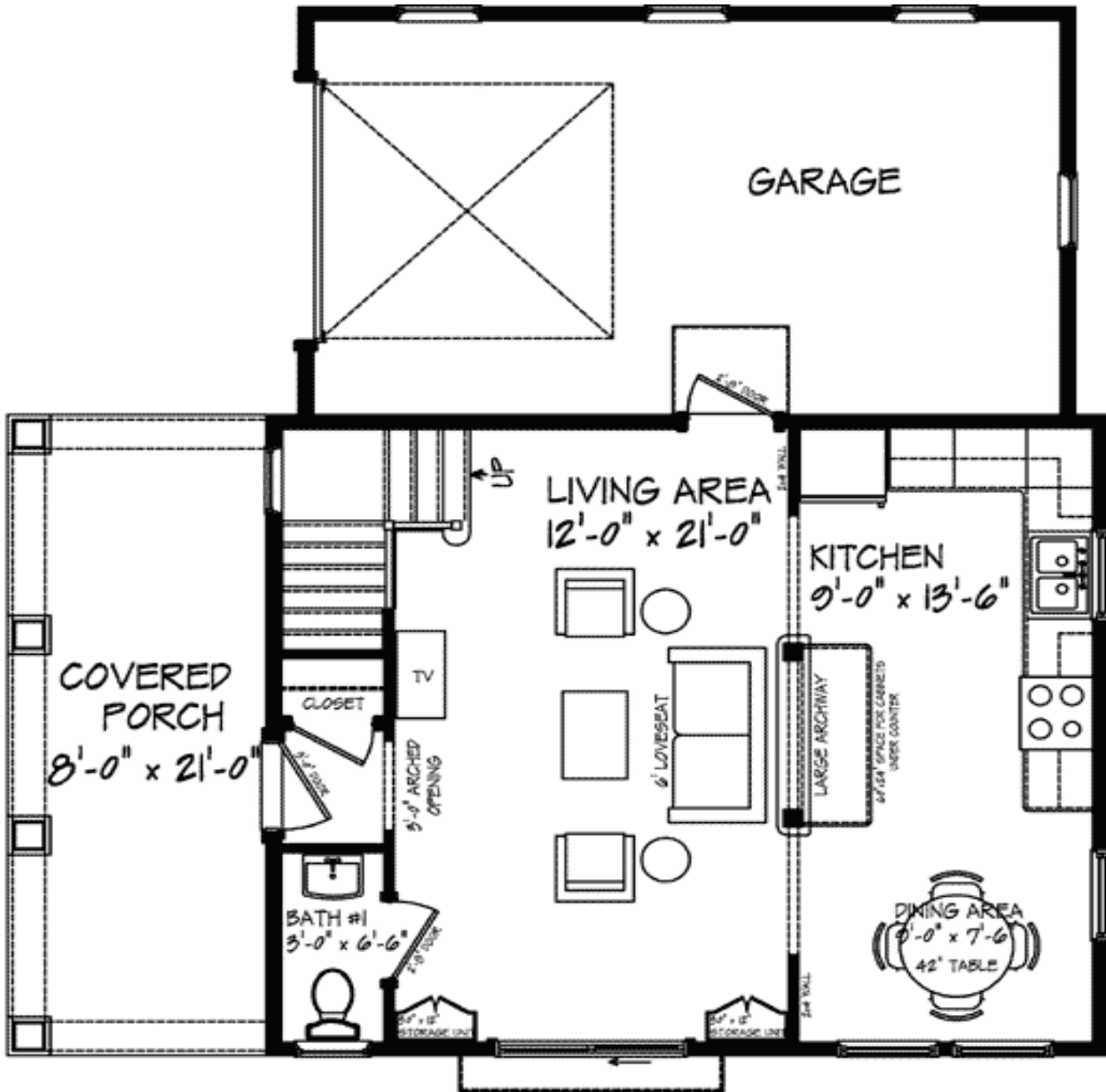
2nd Floor: 8'

Standard Foundations: Slab

Special Features: PDF, Narrow Lot, CAD Available

One Set	Five Sets	Eight Sets	Reproducible	PDF File	CAD
\$495	\$545	\$595	\$625	\$625	\$1,195

Main Level



2nd Level

