

Plan W6265V: Split-Bedroom House Plan



House plans are Copyright © 2009 by our architects and designers.

- Nicely detailed columns support the front porch of this split-bedroom traditional home plan, which includes 684 square feet of bonus space upstairs for future expansion.
- In back, another covered porch is accessed from both the private master suite and the dining room.
- You enter directly into the great room, where cabinetry flanks the fireplace. Straight ahead is the dining room, which flows into the kitchen with its snack-bar island.
- Forming a separate wing in back to maximize privacy, the master suite boasts a cathedral ceiling in the bedroom. The master bath contains a walk-in closet and a bath with a separate shower, a garden tub and twin sinks.
- Of identical size, the secondary bedrooms are sited on either side of the second full bath.
- Foundation options: basement, slab or crawl space.

Style: Country, Traditional

Total Living Area: 1551

Main Flr.: 1551

Basement Unfinished: 1,551 sq. ft.

Bonus: 526 sq. ft.

Front Porch: 136 sq. ft.

Rear Porch: 259 sq. ft.

Total Square Feet: 4,549 sq. ft.

Attached Garage: 2 Car, 526 sq. ft.

Bedrooms: 3

Full Bathrooms: 2

Width: 56'

Depth: 52'8"

Maximum Ridge Height: 18'

Exterior Walls: 2x4

Ceiling Height:

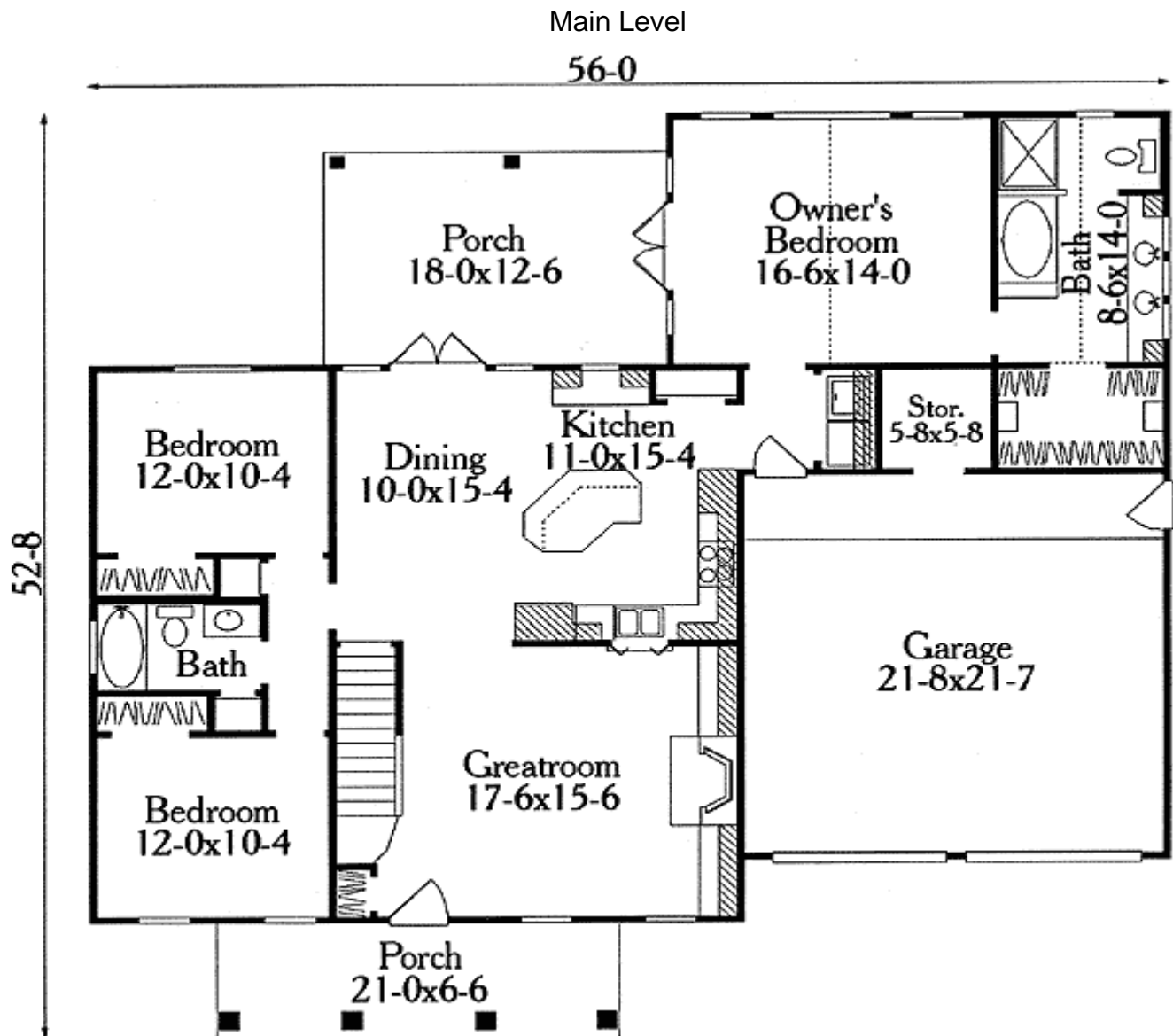
Main Floor: 9'

Other: Vaulted MBR

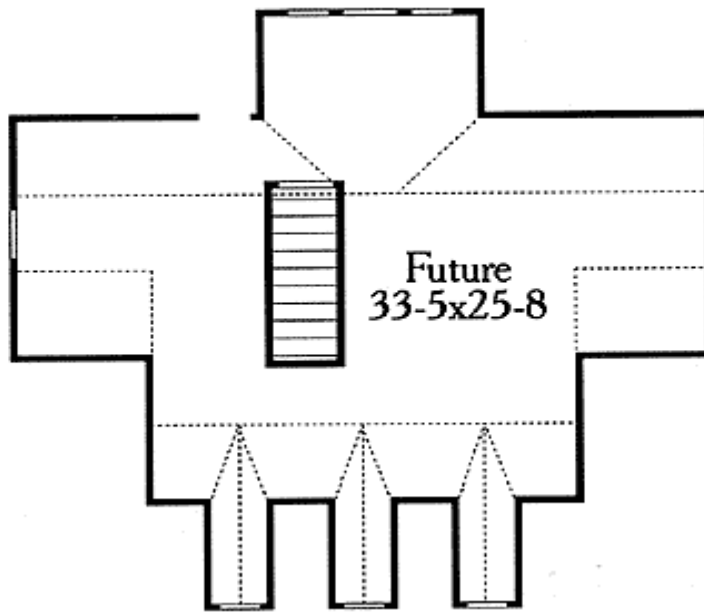
Standard Foundations: Slab, Basement, Crawl

Special Features: 1st Floor Master Suite, Bonus Room, PDF, Split Bedrooms

One Set	Five Sets	Eight Sets	Reproducible	PDF File
\$505	\$565	\$595	\$735	\$735



Bonus



Rear View

