

# Architectural Designs ...selling quality house plans for over 30 years.

Plan W6305HD: Inviting Mediterranean Home Plan



House plans are Copyright © 2009 by our architects and designers.

- The inviting covered entry of this Mediterranean design leads to the foyer, which flows into an angular living room with a wet bar. Vaulted ceilings throughout most of the home add volume and light.
- In the well-laid-out kitchen, with a pass-through, the features include a V-shaped counter and a walk-in pantry. The kitchen overlooks both the breakfast nook and the spacious family room, where a window crowning the fireplace takes advantage of the vaulted ceiling.
- The generously proportioned master suite contains a sitting area opening to the covered patio in back, his and her walk-in closets and a compartmented bath with a corner garden tub which has a privacy wall outside.
- Bedroom two and an adjacent full bath open off the family room. Two additional vaulted bedrooms, opening off the skylit hallway, share the third full bath.
- Related Plans: Interested in different exteriors? See house plans 6323HD and 6404HD (with 262 s.f. in upstairs bonus space).

Style: Florida, Mediterranean, Southern

Total Living Area: 2224

Main Flr.: 2224

Covered Patio: 266 sq. ft.

Entry: 113 sq. ft.

Total Square Feet: 3,156 sq. ft.

Attached Garage: 2 Car, 553 sq. ft.

Bedrooms: 4

Full Bathrooms: 3

Width: 58'6"

Depth: 72'

Maximum Ridge Height: 23'

Exterior Walls: Block

Ceiling Height:

Main Floor: 8'

Standard Foundations: Slab

Alternate Foundations: Basement (\$675), Crawl (\$675)

Special Features: MBR Sitting Area, Bonus Room, Split Bedrooms, PDF, CAD Available, Photo Gallery, Butler Walk-in Pantry, 1st Floor Master Suite, Corner Lot

One Set  
\$560

Five Sets  
\$600

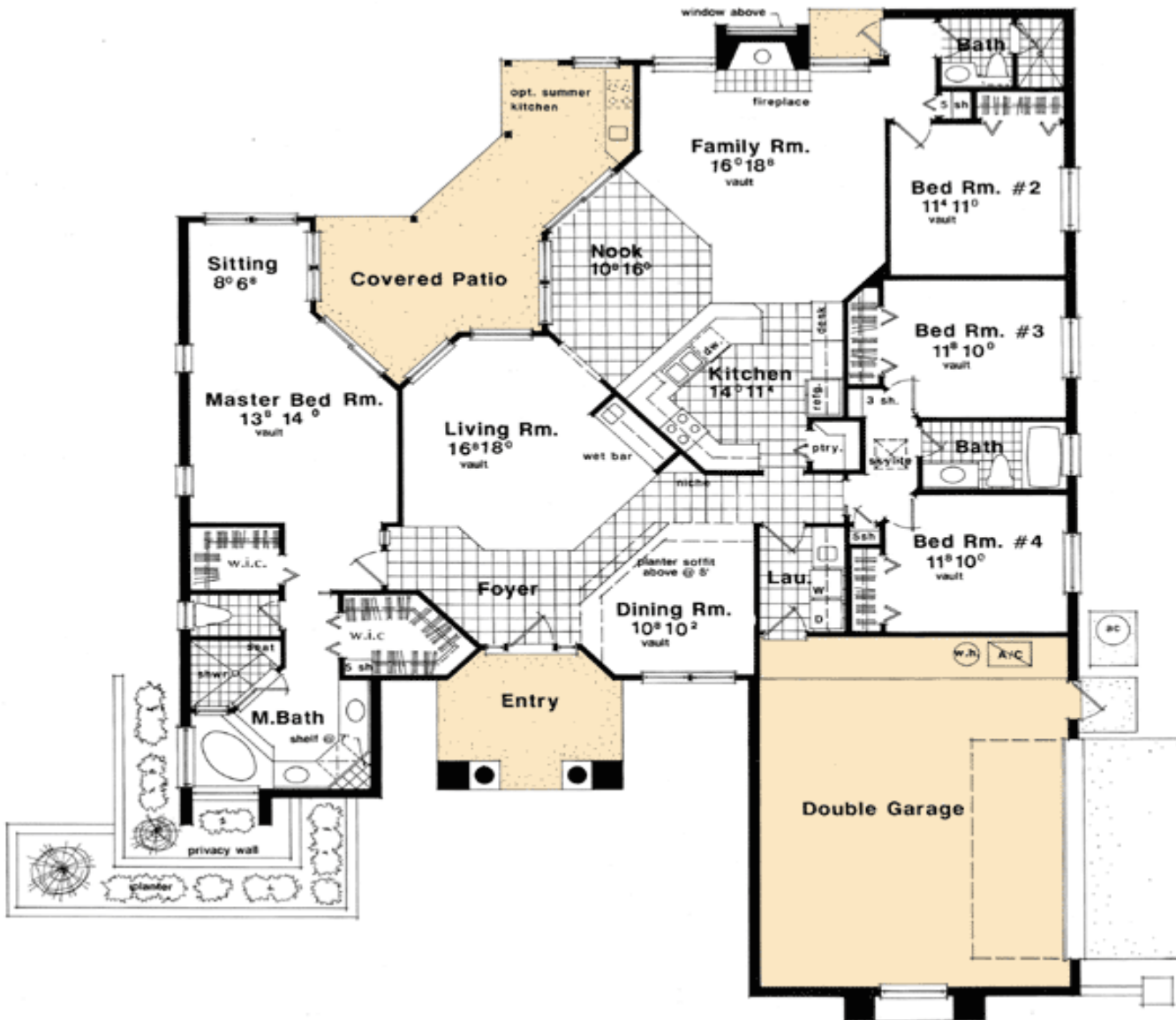
Eight Sets  
\$650

Reproducible  
\$750

PDF File  
\$750

CAD  
\$1,500

## Main Level

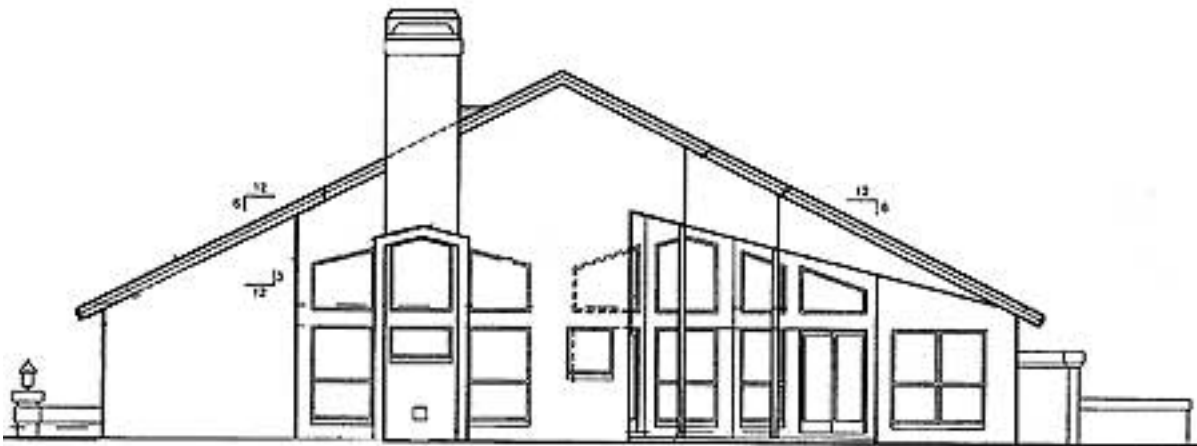


# Architectural Designs ...selling quality house plans for over 30 years.

Photo



Rear View



## Interior

