

Architectural Designs ...selling quality house plans for over 30 years.

Plan W21093DR: Country Charm with Wrap-Around Porch



House plans are Copyright © 2009 by our architects and designers.

- A pillared wrap-around porch dresses up the exterior of this charming country cottage. Inside, a well designed plan incorporates many features in a small space.
- French doors lead directly into the kitchen/dining room from the front porch.
- Adjacent is a generously sized family room.
- A second bedroom with its own shower room completes the first floor.
- Upstairs, the master suite has a walk-in closet and a full bathroom. There is plenty of room on the mezzanine for either a third bedroom or a home office/study.
- An unfinished full basement provides space for storage or expanded family living.
- Related Plans: Need more room? See house plan 21861DR (1,561 sq. ft.).
- Building in reverse? See house plan 21492DR.
- Need a garage? See house plan 21506DR.

Style: Canadian, Country, Metric

Total Living Area: 1168

Main Flr.: 730

2nd Flr.: 438

Basement Unfinished: 730 sq. ft.

Front Porch: 136 sq. ft.

Total Square Feet: 2,034 sq. ft.

Bedrooms: 3

Full Bathrooms: 2

Width: 25'8"

Depth: 30'

Maximum Ridge Height: 24'9"

Exterior Walls: 2x6

Ceiling Height:

Main Floor: 8'

2nd Floor: 8'

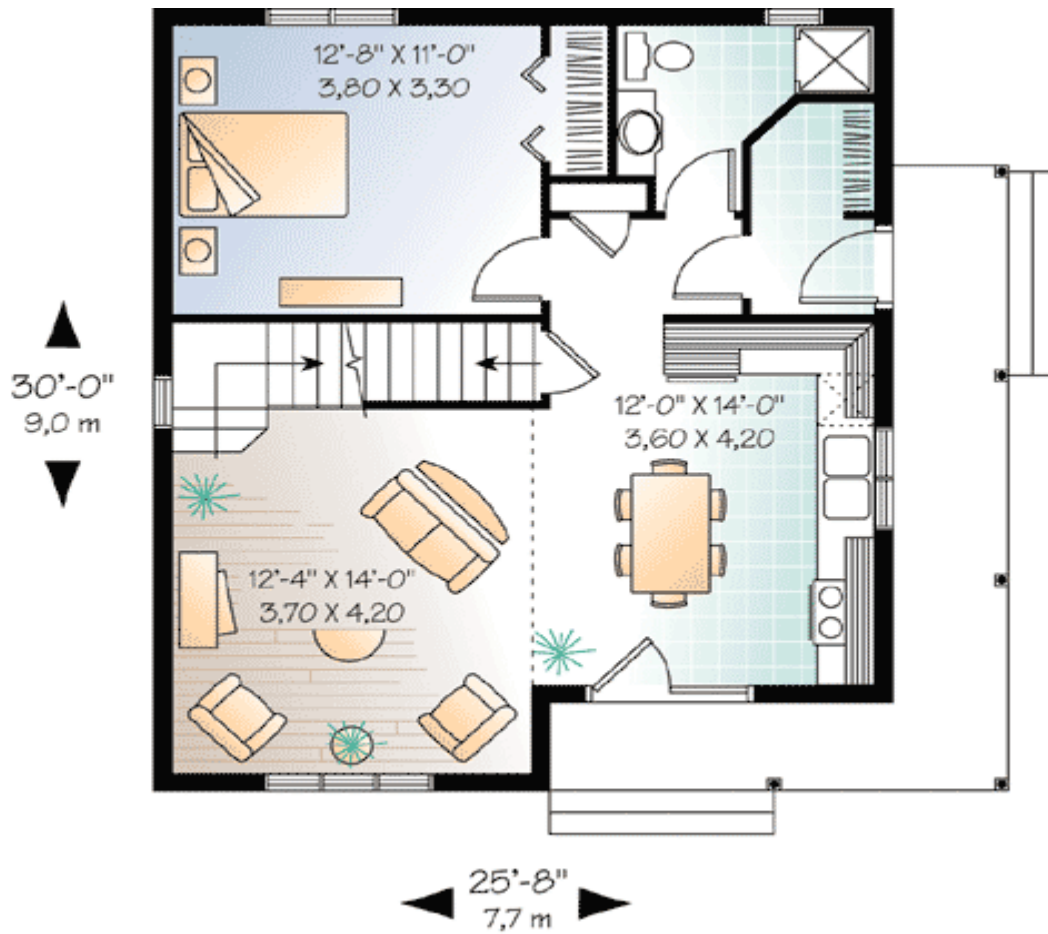
Standard Foundations: Basement

Alternate Foundations: Slab (\$295), Crawl (\$295)

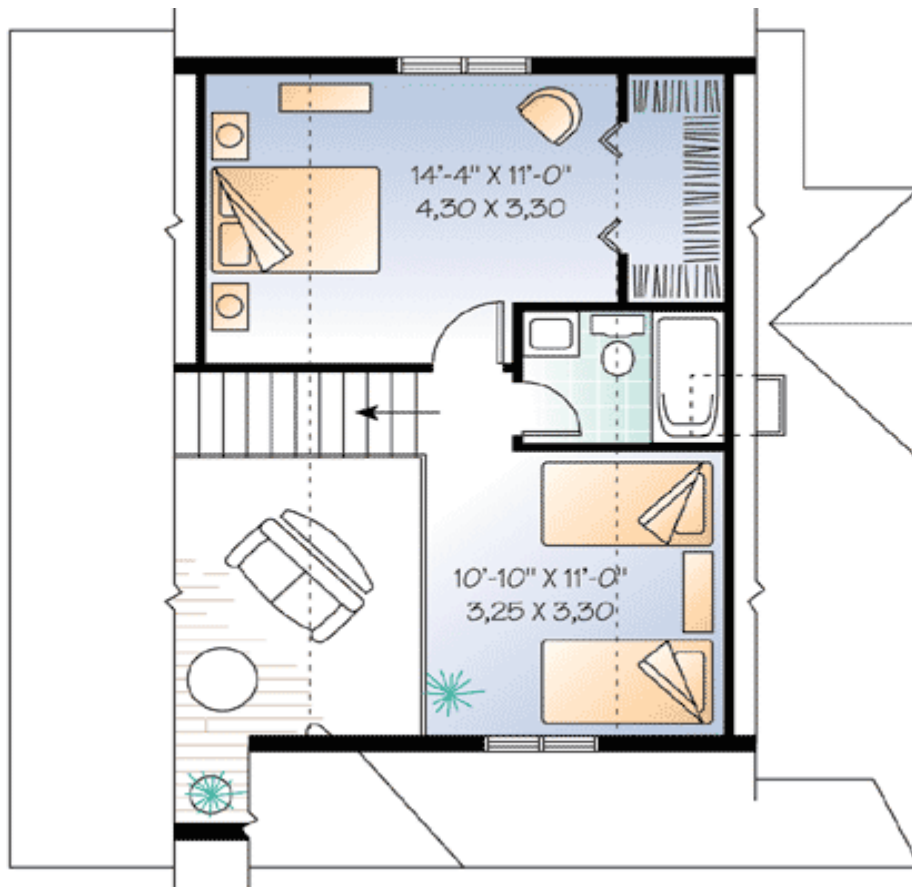
Special Features: PDF, Narrow Lot, CAD Available

One Set	Five Sets	Eight Sets	Reproducible	PDF File	CAD
\$499	\$539	\$569	\$749	\$749	\$1,430

Main Level



2nd Level



Rear View

