

Architectural Designs ...selling quality house plans for over 30 years.

Plan W44026TD: Classic Florida Cracker Beach House Plan



House plans are Copyright © 2009 by our architects and designers.

- This is a classic Florida cracker beach house plan featuring two bedrooms.
- The upstairs suite has window views in all directions and is the perfect romantic getaway. It is complete with sitting area, walk-in closet, large shower, soaking tub, and dual sinks.
- The open downstairs is perfect for entertaining with the large open kitchen.
- The wrap around porch gives views over the surrounding landscape to the water beyond.
- The exterior of this waterfront home plan features simple trim and moldings, lap siding, divided lite windows, decorative railings, 10:12 pitch standing seam metal roof on the main house, 2.5:12 pitch standing seam metal roof on the porch.
- Energy-saving features include R-30 roof insulation, R-13 wall insulation, tankless water heaters.
- Related Plan: Need a drive-under garage? See house plan 44041TD.
- Video Tour:

Style: Beach, Florida, Vacation

Total Living Area: 1527

Main Flr.: 1032

2nd Flr.: 495

Porch, Combined: 1,272 sq. ft.

Total Square Feet: 2,799 sq. ft.

Bedrooms: 2

Full Bathrooms: 2

Width: 48'

Depth: 48'

Maximum Ridge Height: 35'

Exterior Walls: 2x6

Ceiling Height:

Main Floor: 9'4"

2nd Floor: 10'

Standard Foundations: Piling

Special Features: Unlimited Build, PDF, CAD Available, Narrow Lot

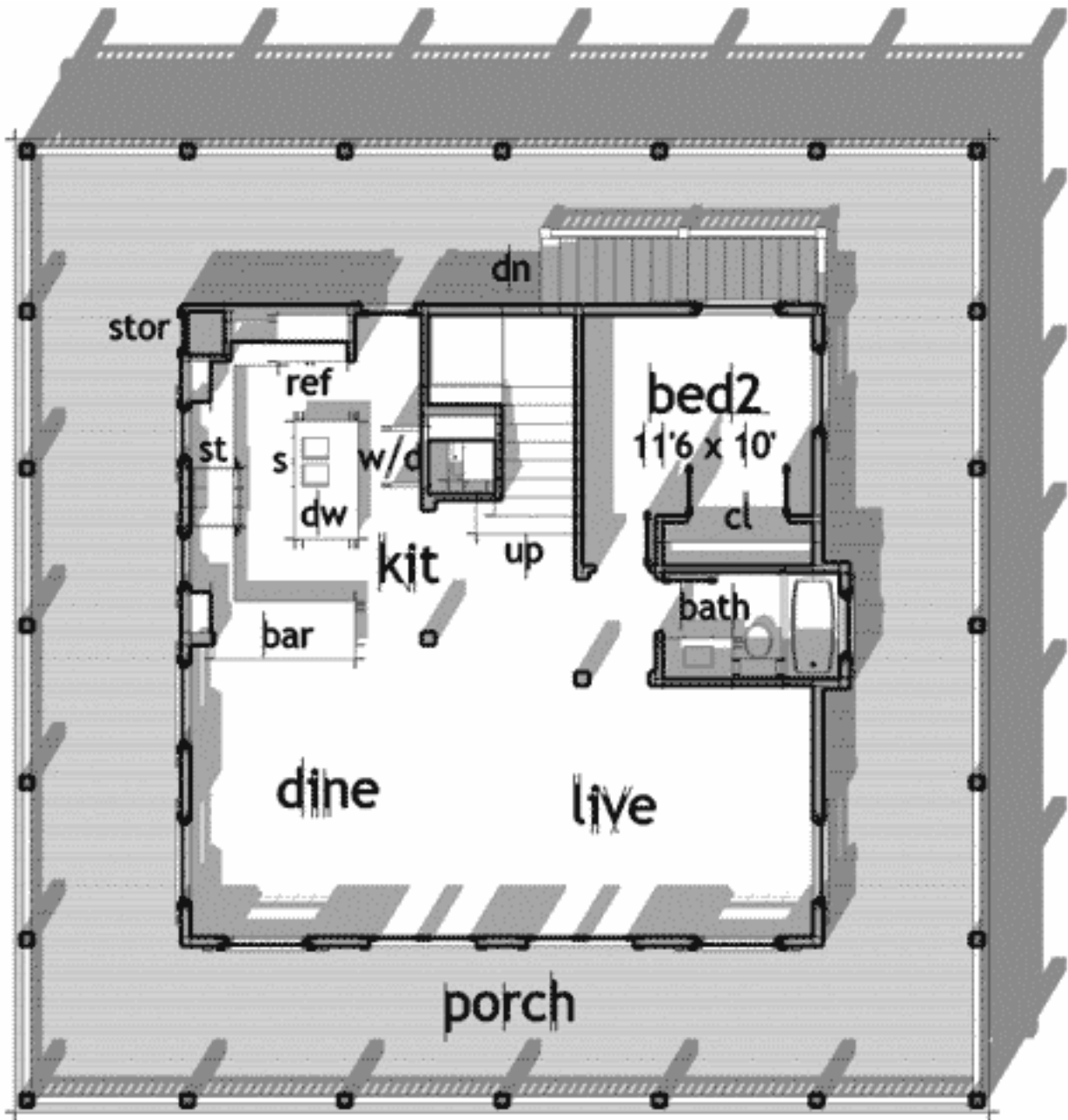
Eight Sets
\$1,200

Reproducible
\$1,200

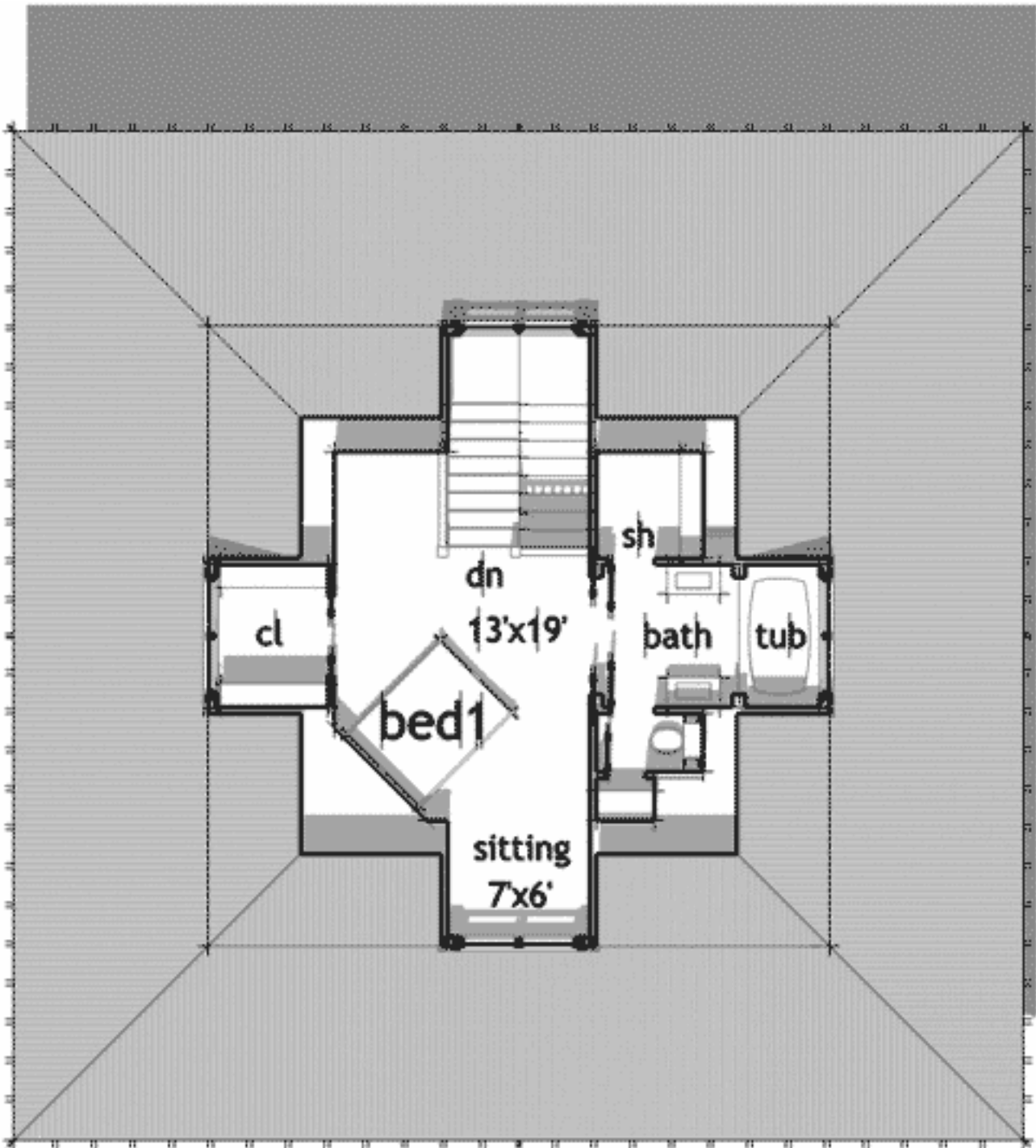
PDF File
\$1,000

CAD
\$1,000

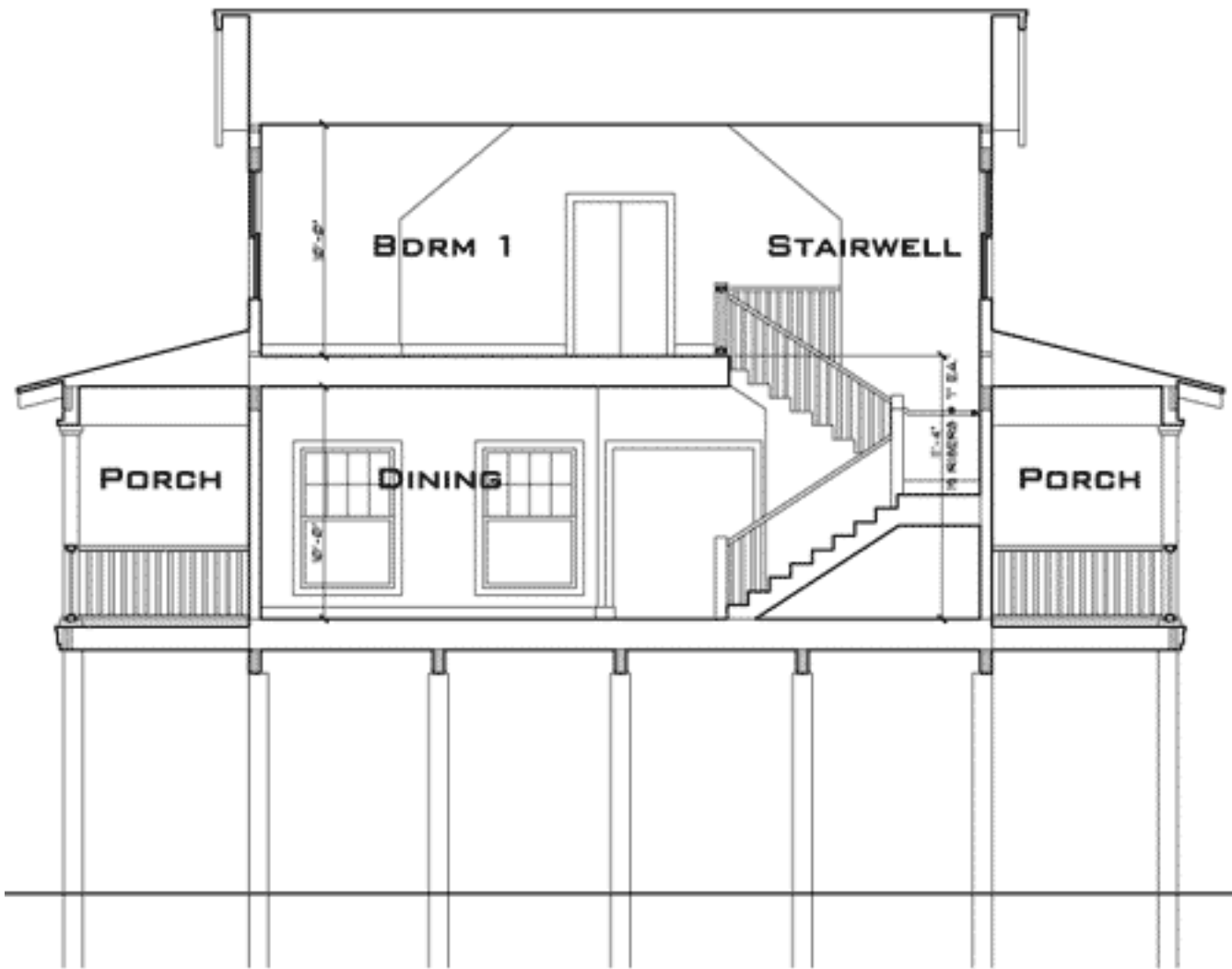
Main Level



2nd Level



Other

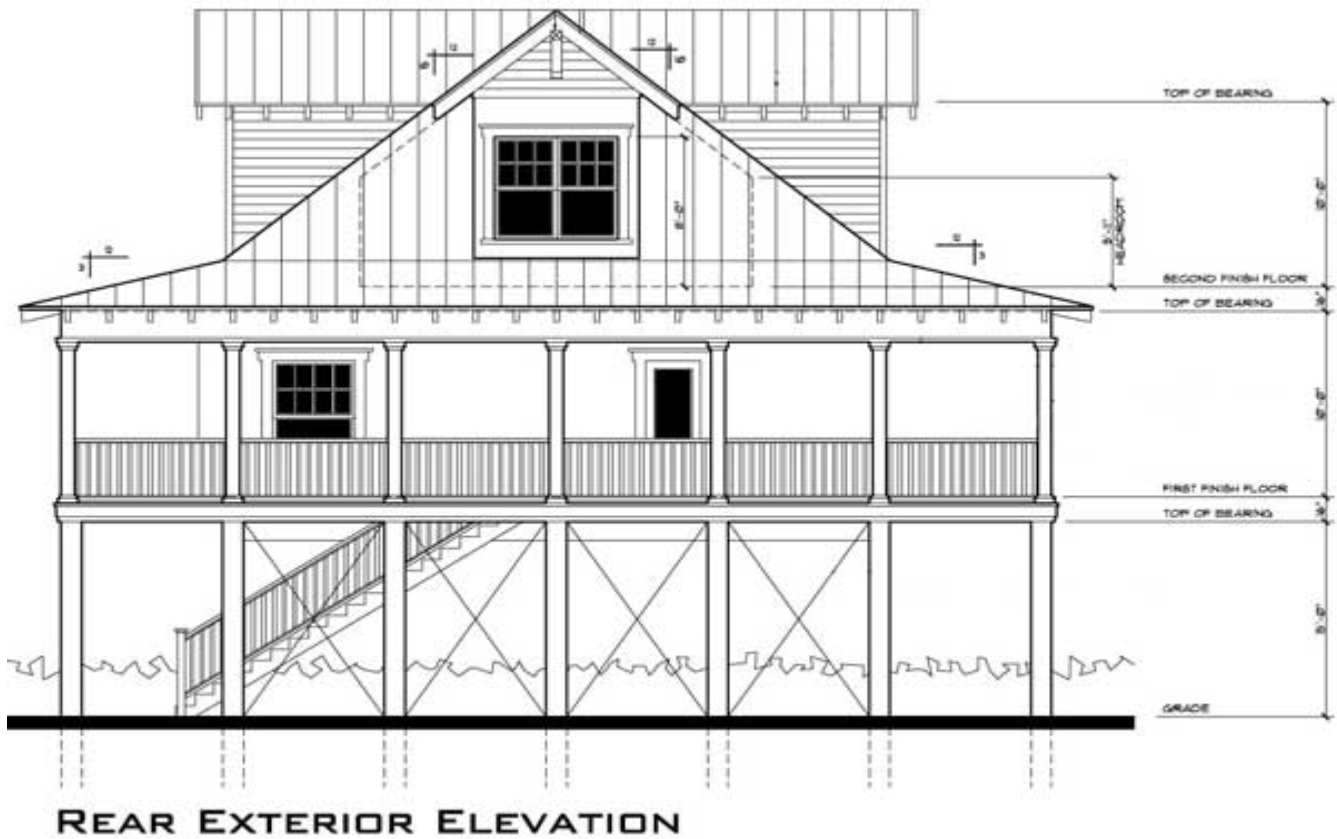


BUILDING SECTION

Elevation #2



Rear View



Kitchen



Porch

