

# Architectural Designs ...selling quality house plans for over 30 years.

Plan W88334SH: Loft Apartment Plan



House plans are Copyright © 2009 by our architects and designers.

- Shingles and craftsman elements adorn the exterior of this appealing loft apartment plan.
- A three-car garage fills the lower level, while a roomy apartment resides above.
- The 676 square feet of living space includes an L-shaped kitchen, light-filled living room, full bathroom and bedroom with a walk-in closet.
- Live in this charming home or use the space for rental income.

Style: Canadian, Carriage, Garage

Total Living Area: 676

2nd Flr.: 676

Total Square Feet: 1,468 sq. ft.

Attached Garage: 3 Car, 792 sq. ft.

Bedrooms: 1

Full Bathrooms: 1

Width: 34'

Depth: 24'

Maximum Ridge Height: 22'

Exterior Walls: 2x6

Ceiling Height:

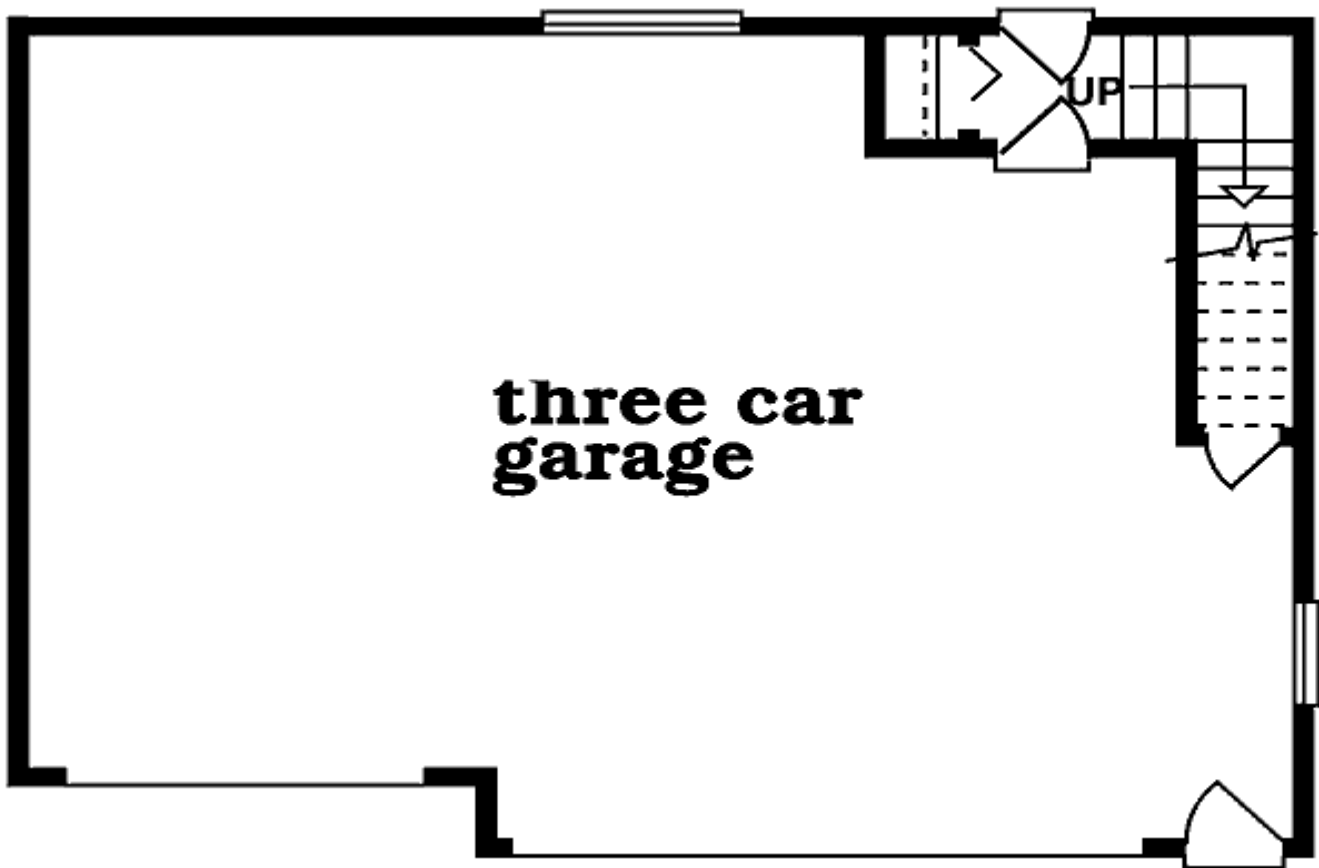
    Main Floor: 8'

Standard Foundations: Slab

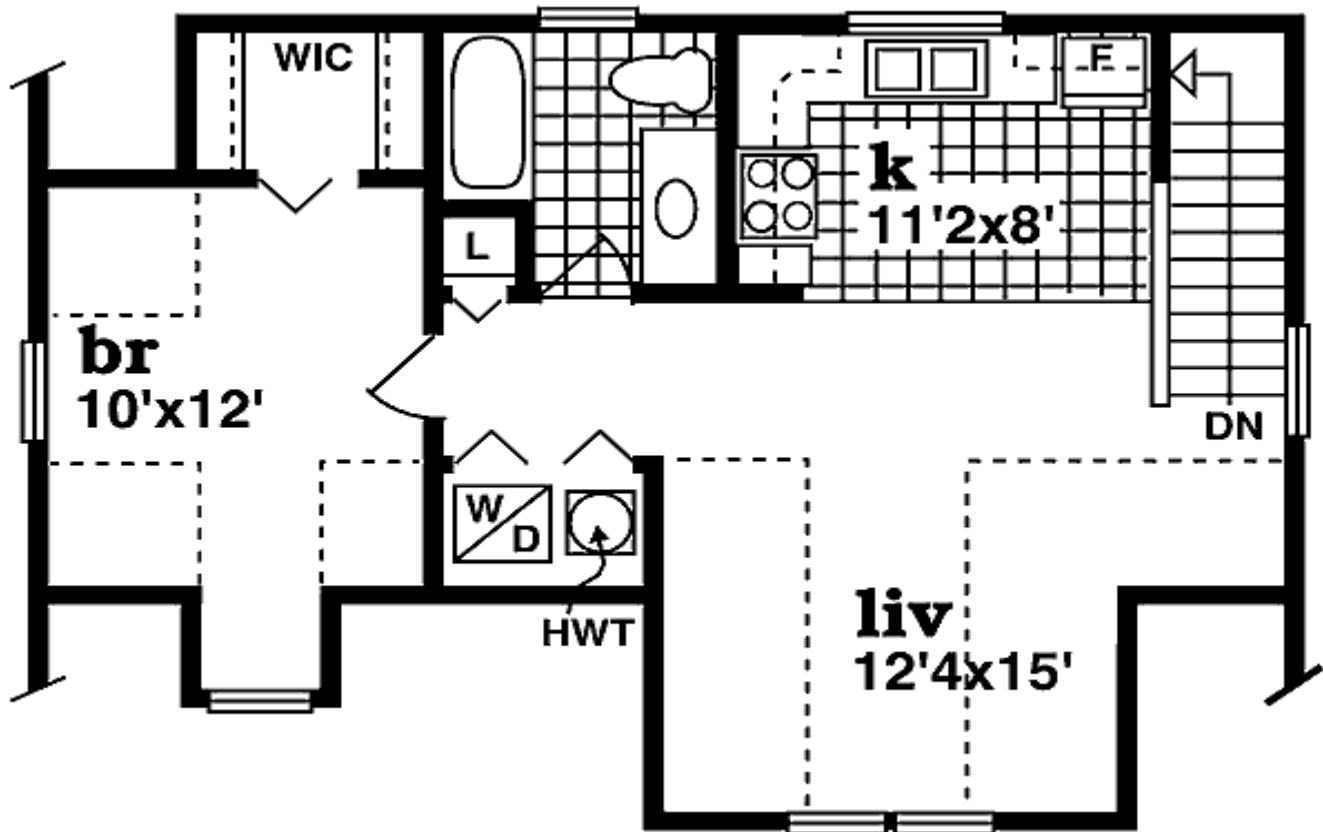
Special Features: PDF, CAD Available, Narrow Lot

Five Sets	Eight Sets	Reproducible	PDF File	CAD
\$220	\$260	\$320	\$320	\$520

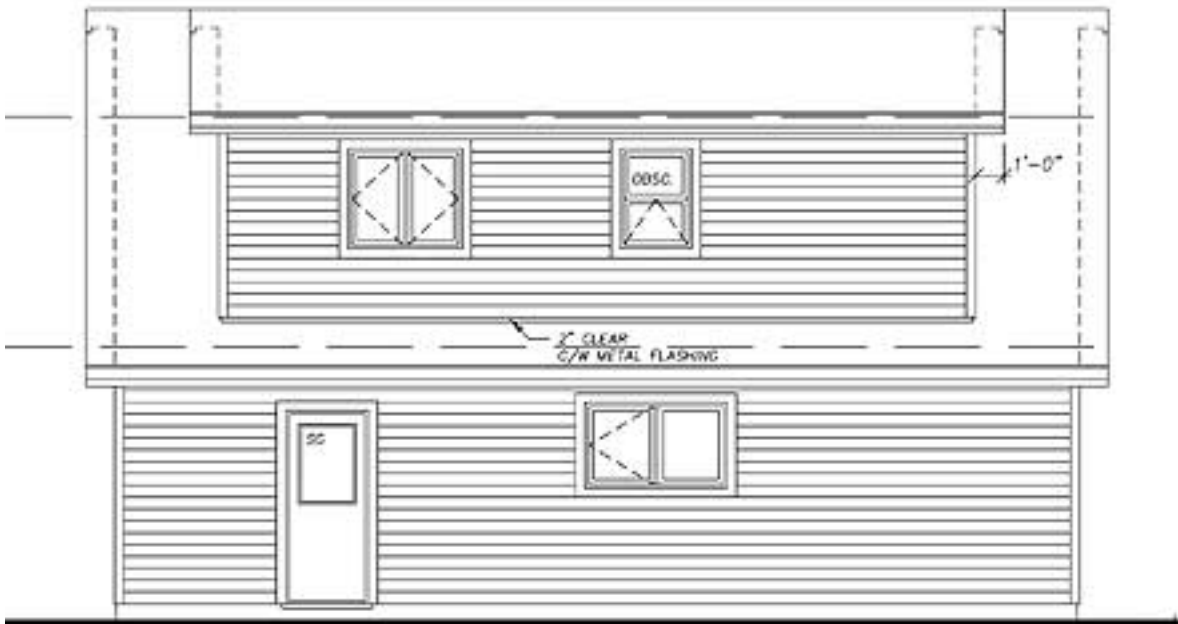
Main Level



2nd Level



Rear View



REAR ELEVATION