

Plan W6884AM: Sloping Lot Country Cottage



House plans are Copyright © 2009 by our architects and designers.

- With its oversized drive-under garage, this charming country cottage house plan would fit nicely on a sloping lot. Steeply pitched gables with decorative brackets set the mood.
- From the foyer you can survey the dining room and the two-story living room with its two-story window.
- A two-sided fireplace warms both the living room and the family room, which opens to a deck in front. The adjacent kitchen includes a pantry closet, ample counter space and a central cooktop island. A nook between the kitchen and the family room is a good place for informal meals.
- Upstairs, a loft overlooks the living room below. Light pours from a large arched window into the vaulted master bedroom, which opens to a compartmented five-fixture bath with a walk-in closet. The secondary bedrooms are served by another bath in the hall.
- Foundation options: basement or slab. Please specify your preference when ordering. The lower level stair area adds on 66 square feet.
- Related Plans: For an alternate exterior, see house plan 69180AM.
- For other hillside home plans, don't miss 69029AM, 6924AM and 69035AM.

Style: Cottage, Country, Shingle Style

Total Living Area: 1978

Main Flr.: 1106

2nd Flr.: 872

Lower Level: 66

Attached Garage: 2 Car, 841 sq. ft.

Bedrooms: 3

Full Bathrooms: 2

Half Bathrooms: 1

Width: 38'

Depth: 35'

Maximum Ridge Height: 39'

Exterior Walls: 2x6

Ceiling Height:

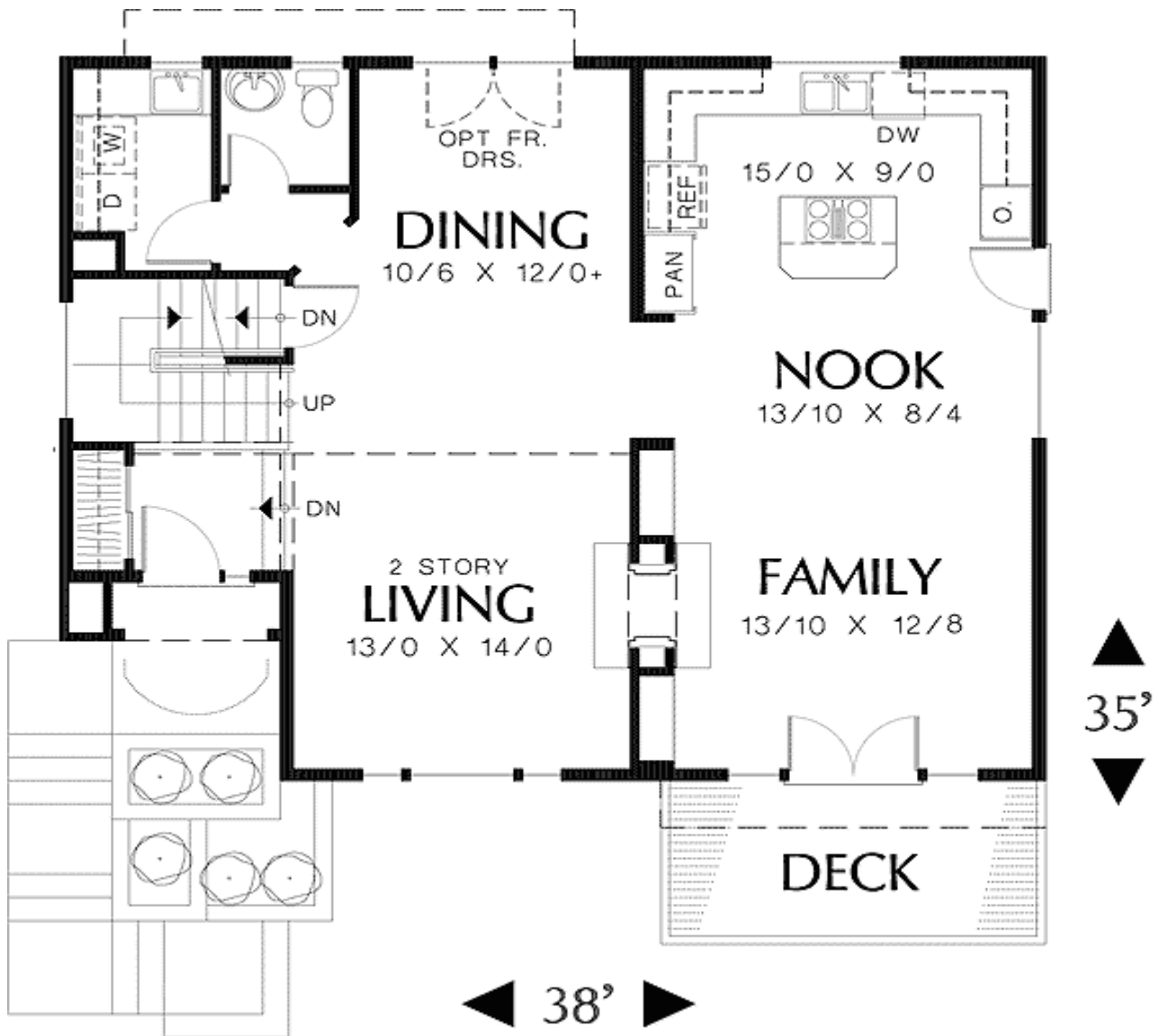
Other: 2-Story Living Room; Vaulted MBR

Standard Foundations: Slab

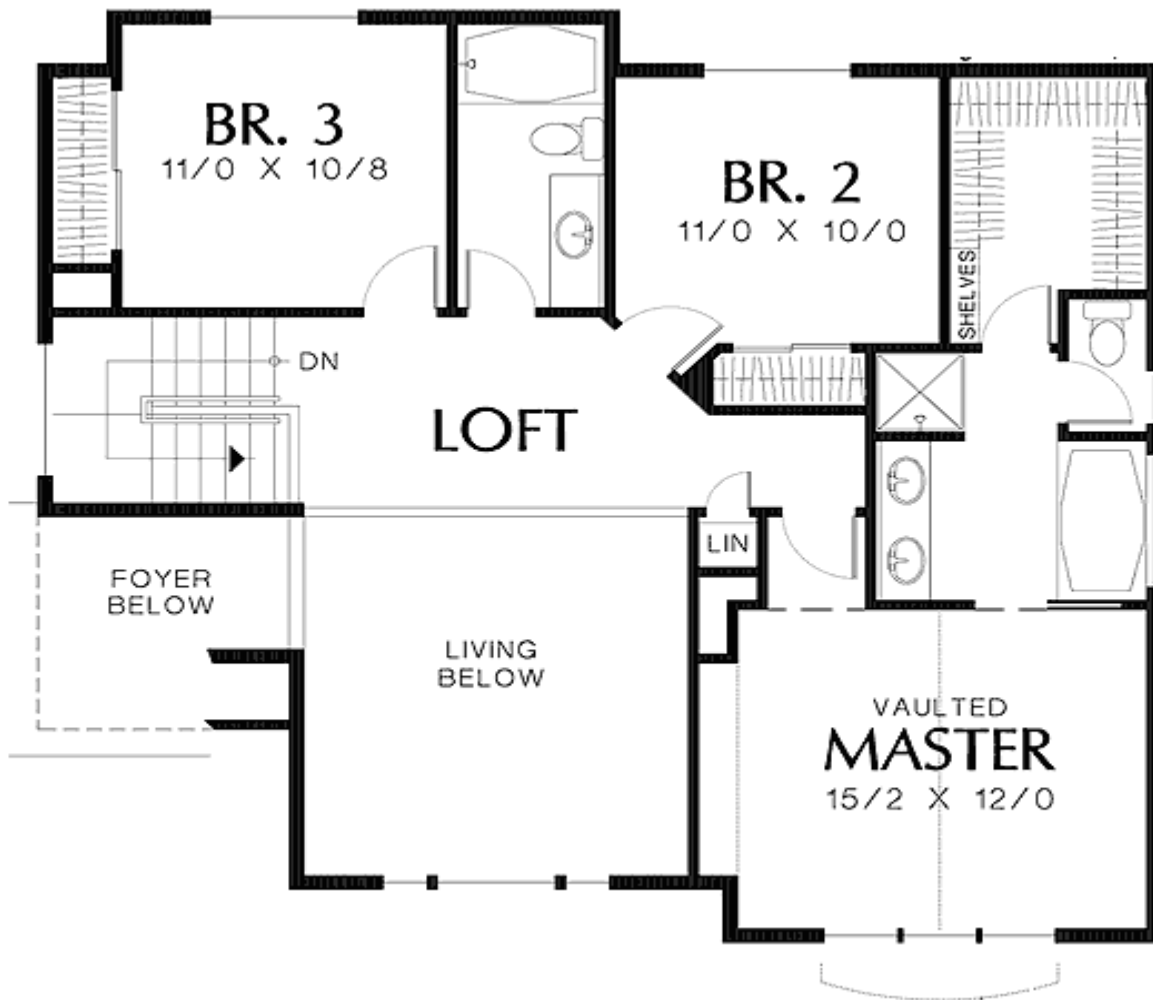
Special Features: CAD Available, Narrow Lot, Loft, PDF, Drive Under Garage, Sloping Lot

One Set	Five Sets	Eight Sets	Reproducible	PDF File	CAD
\$525	\$595	\$650	\$850	\$850	\$1,450

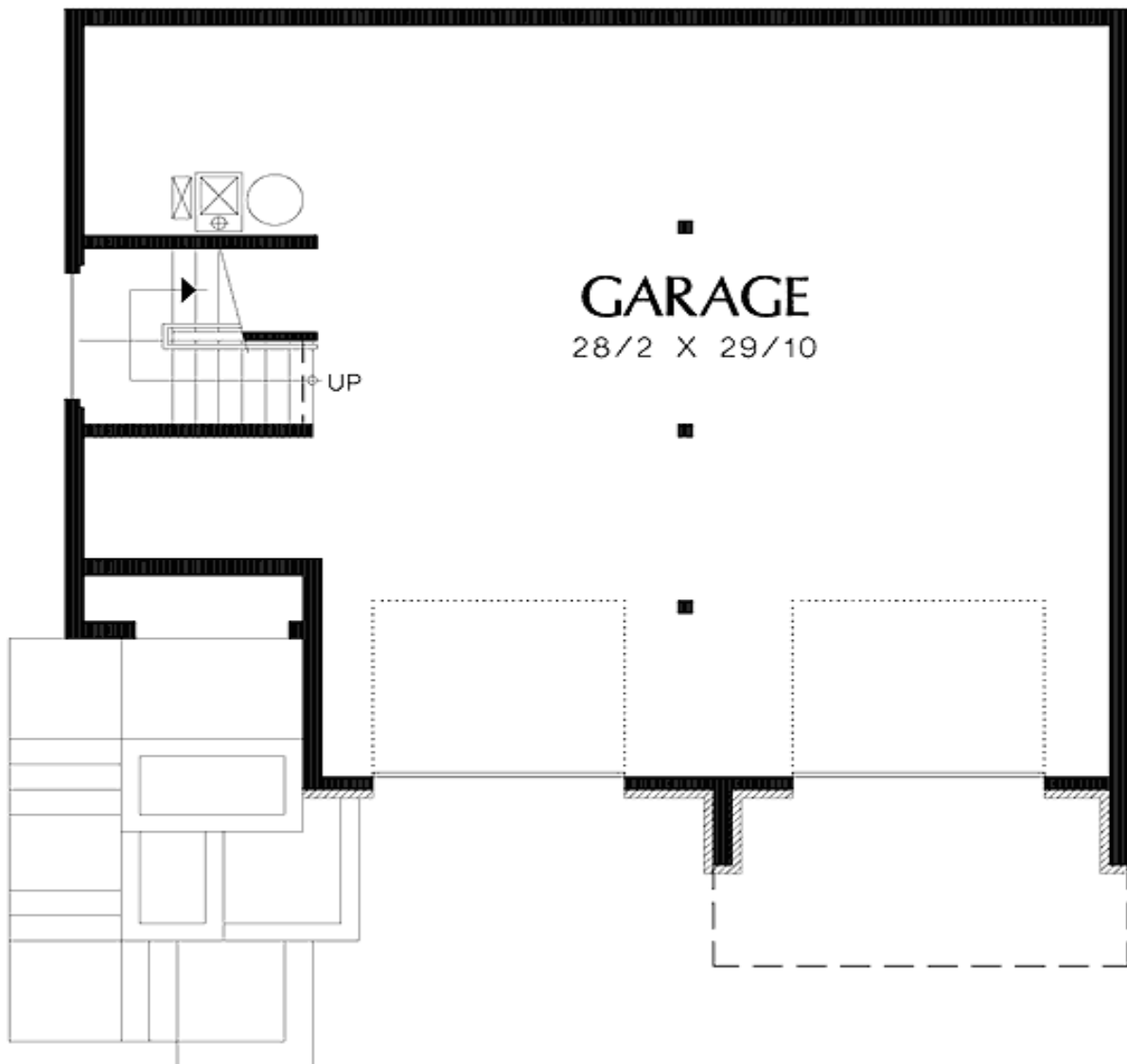
Main Level



2nd Level



Lower Level



Rear View

