

Architectural Designs ...selling quality house plans for over 30 years.

Plan W6365HD: Innovative One Story Design



House plans are Copyright © 2009 by our architects and designers.

- This innovative house plan takes advantage of an angled entry, maximizing visual impact and making it possible to include four bedrooms.
- The study or fourth bedroom lies off the entry. The master suite also takes advantage of another angled entry to create long vistas into the space.
- Joined together into one large area, the family and dining areas allow for creative decorating. The breakfast room with a bay and the kitchen with its pass-through overlook the outdoors.
- Note the volume ceilings throughout the home.
- A three-car garage option eliminates the fourth bedroom.
- Related Plan: For alternate Tuscan styling, see house plan 63155HD.

Style: Florida, Mediterranean

Total Living Area: 1865

Main Flr.: 1865

Covered Patio: 400 sq. ft.

Entry: 86 sq. ft.

Total Square Feet: 2,751 sq. ft.

Attached Garage: 2 Car, 400 sq. ft.

Bedrooms: 4

Full Bathrooms: 2

Width: 45'

Depth: 66'

Maximum Ridge Height: 19'10"

Exterior Walls: Block

Ceiling Height:

 Main Floor: 13'

Standard Foundations: Slab

Alternate Foundations: Basement (\$150), Crawl (\$150)

Special Features: Photo Gallery, 1st Floor Master Suite, PDF, CAD Available, Narrow Lot

One Set
\$655

Five Sets
\$805

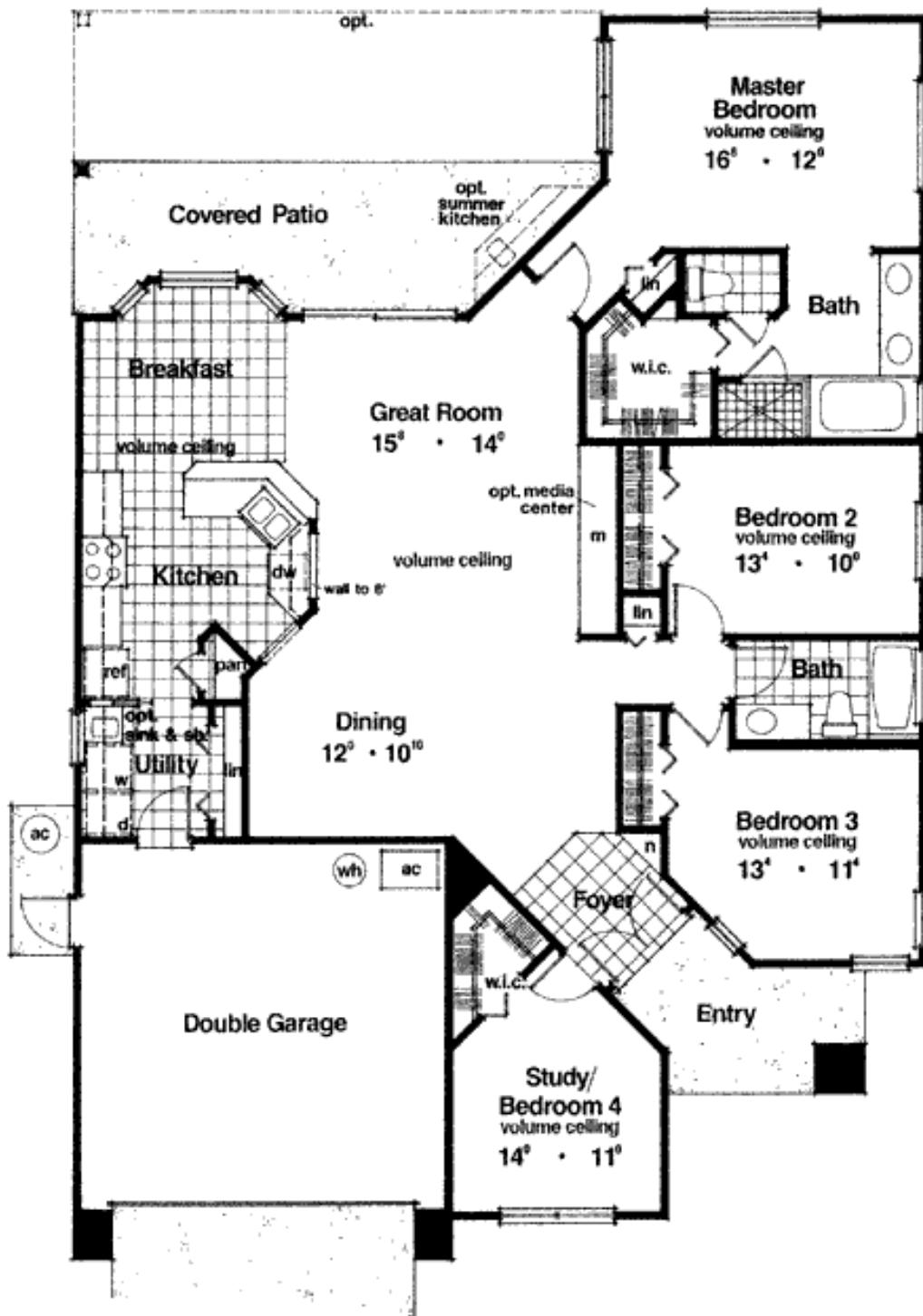
Eight Sets
\$865

Reproducible
\$805

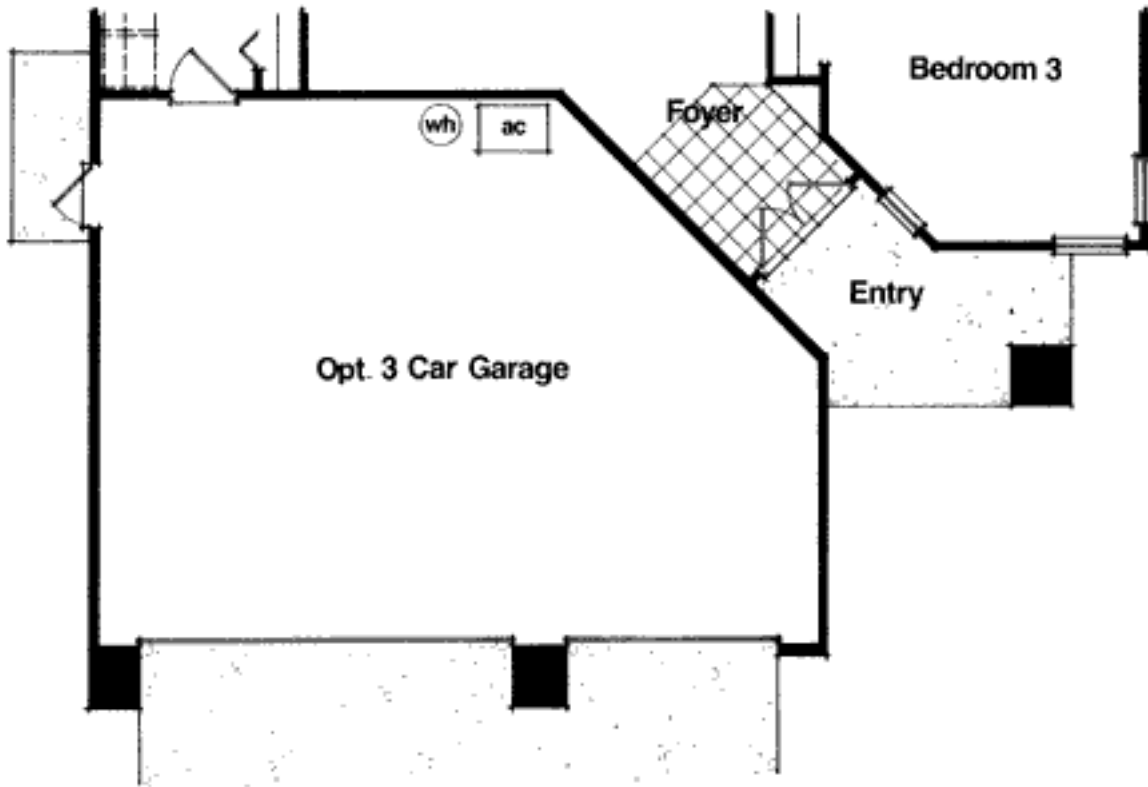
PDF File
\$805

CAD
\$1,105

Main Level



Optional

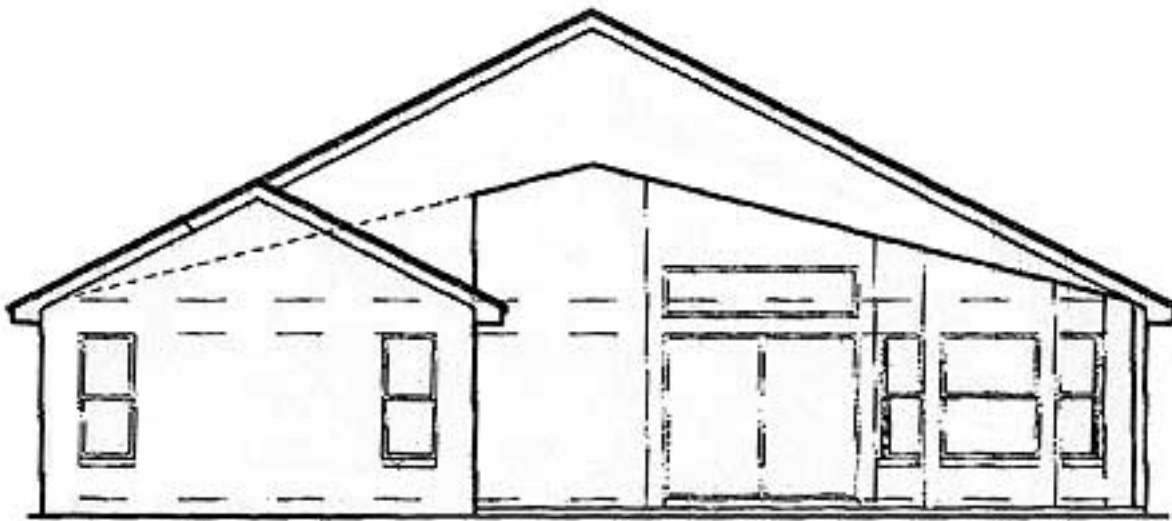


Architectural Designs ...selling quality house plans for over 30 years.

Photo



Rear View



Rear Elevation