

Plan W73272HS: Just the Right Size



House plans are Copyright © 2009 by our architects and designers.

- With a Craftsman exterior that will grace any neighborhood, this home plan is just the right size for retirees or as a starter home. It even comes with an alternate kitchen version.
- The large entry is open to the formal dining room and leads back to a huge, vaulted, informal living/dining/kitchen area.
- Bar stools at the kitchen island provide a place to chat with the chef while preparing meals.
- Brightened by windows on three sides, the sunroom is a cheerful place to curl up with a book.
- The master suite occupies the whole right wing on the home while family or guests have their own spot on the opposite side of the home.
- Added Bonus: Plans come with an optional finished lower level complete with a home theater, two additional bedrooms and an enormous recreation section.
- Related Plan: For an alternate kitchen layout, see house plan 73279HS.

Style: Craftsman, Northwest

Total Living Area: 2109

Main Flr.: 2109

Total Square Feet: 2,877 sq. ft.

Attached Garage: 3 Car, 768 sq. ft.

Bedrooms: 2

Full Bathrooms: 2

Width: 64'

Depth: 50'

Maximum Ridge Height: 25'

Exterior Walls: 2x6

Ceiling Height:

Main Floor: 9'

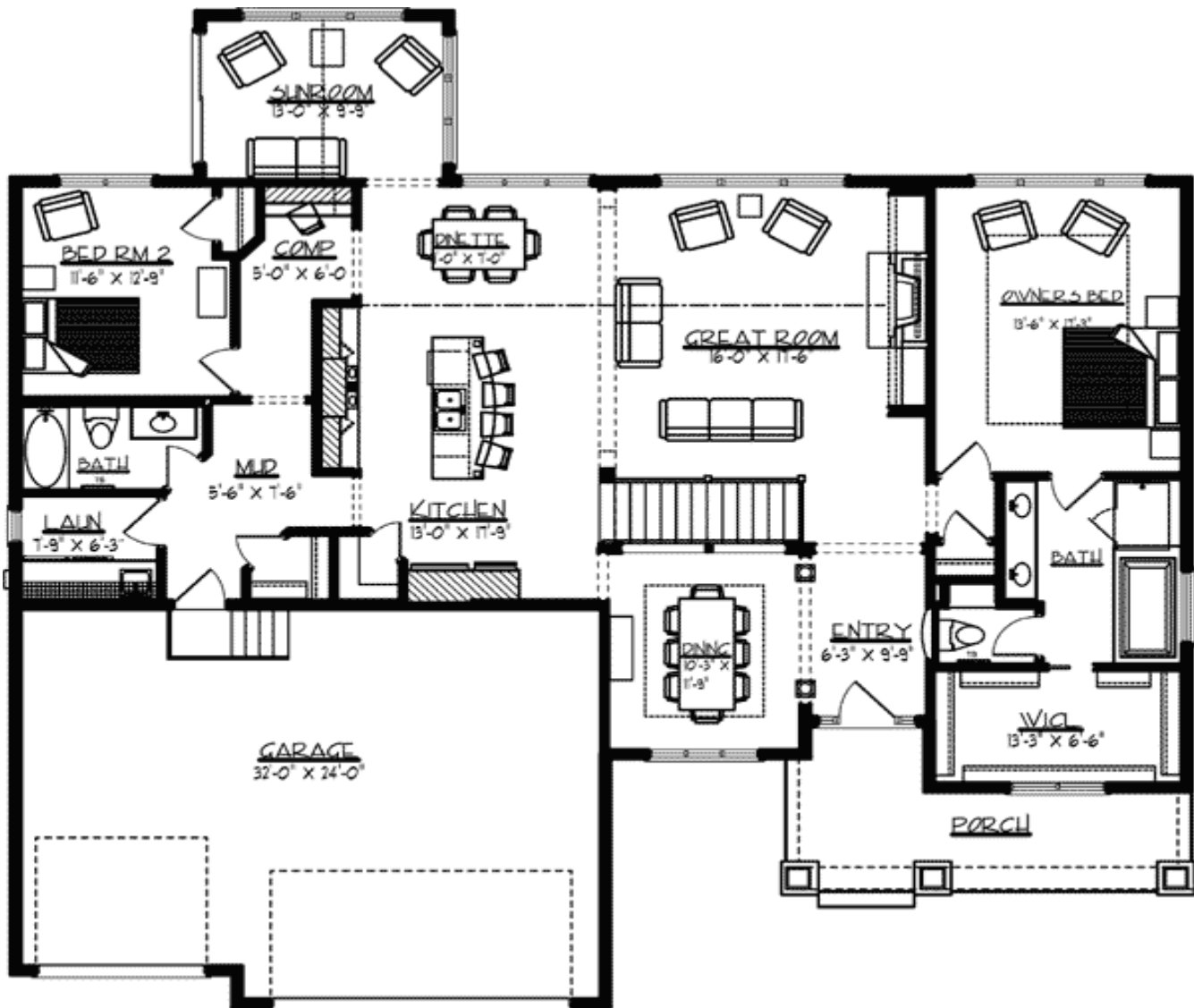
Other: Vaulted Great Room, Sunroom & Kitchen; Tray MBR & Dining

Standard Foundations: Walkout

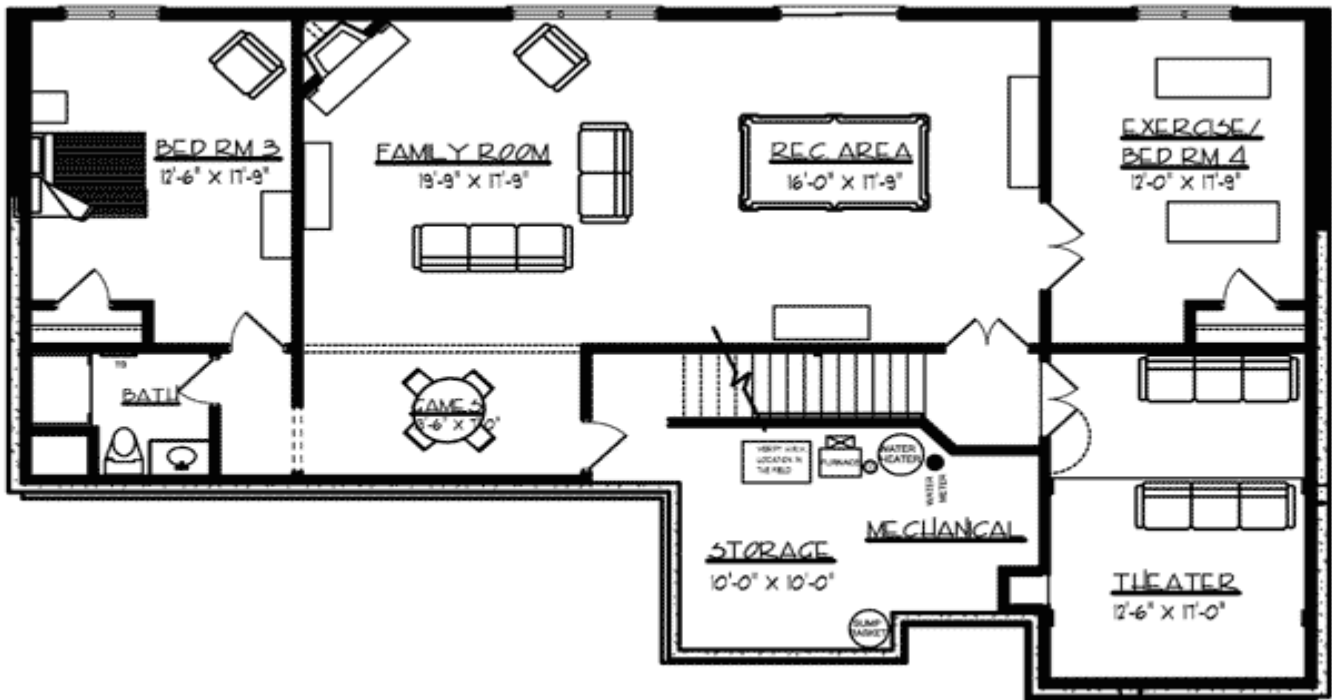
Special Features: CAD Available, 1st Floor Master Suite, Photo Gallery, Split Bedrooms, Media-Game-Home Theater, Butler Walk-in Pantry, PDF, Sloping Lot

One Set	Five Sets	Eight Sets	Reproducible	PDF File	CAD
\$595	\$648	\$714	\$879	\$879	\$1,430

Main Level



Optional



Elevation #2



FRONT ELEVATION

Rear View



REAR ELEVATION

Architectural Designs ...selling quality house plans for over 30 years.

Interior



Great Room



Kitchen

