

Architectural Designs ...selling quality house plans for over 30 years.

Plan W15023NC



House plans are Copyright © 2009 by our architects and designers.

Style: Beach, Country, Low Country, Southern, Vacation

Total Living Area: 2406

Main Flr.: 1497

2nd Flr.: 742

Lower Level: 167

Basement Unfinished: 184 sq. ft.

Front Porch: 305 sq. ft.

Deck: 194 sq. ft.

Covered Patio: 468 sq. ft.

Total Square Feet: 4,425 sq. ft.

Attached Garage: 2 Car, 868 sq. ft.

Bedrooms: 3

Full Bathrooms: 2

Half Bathrooms: 1

Width: 35'

Depth: 52'

Maximum Ridge Height: 37'

Exterior Walls: 2x4

Ceiling Height:

Main Floor: 9'

2nd Floor: 9'

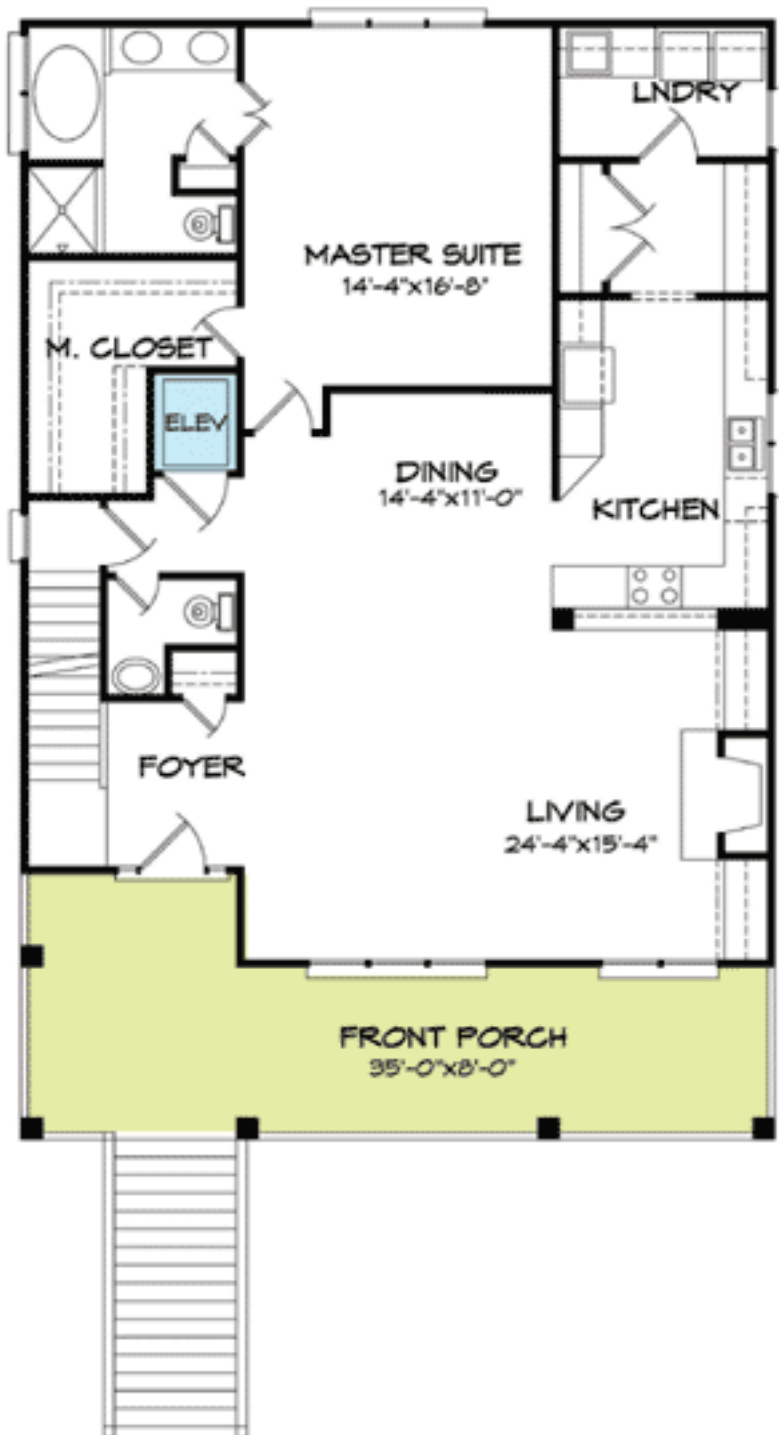
Other: 8' Vaulted BR#2 & #3; 8' Lower Level

Standard Foundations: Piling, Slab

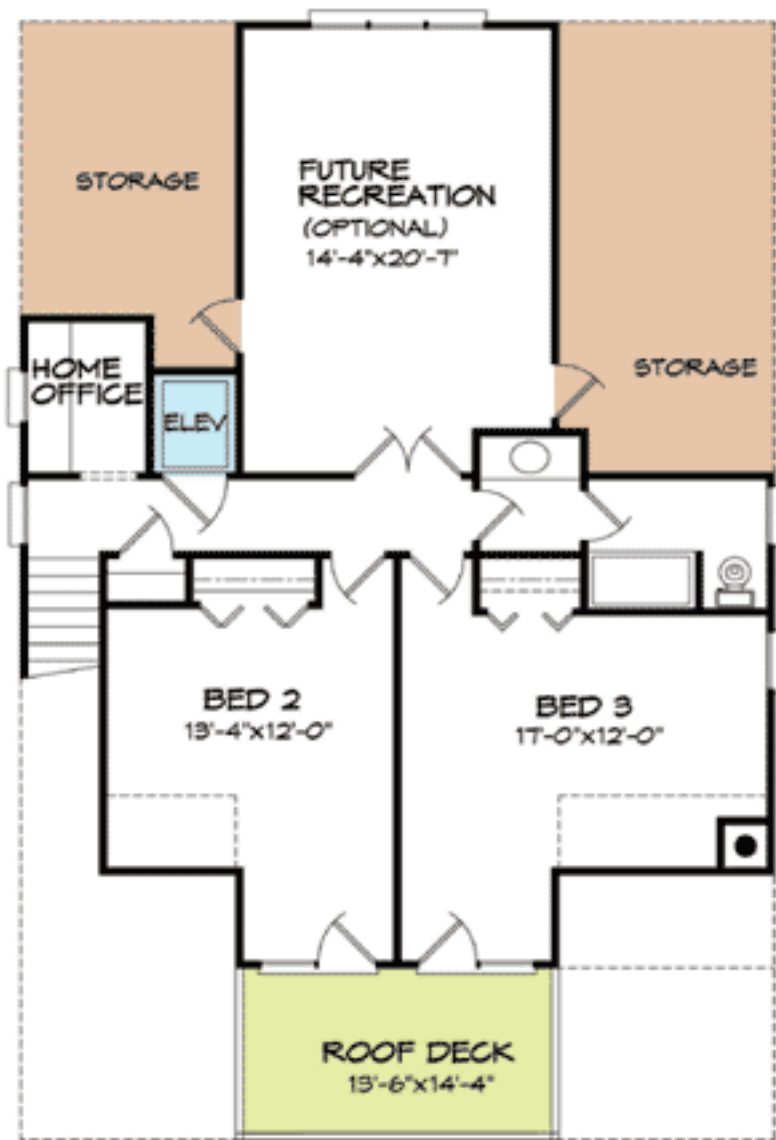
Special Features: Bonus Room, Butler Walk-in Pantry, Drive Under Garage, CAD Available, PDF, 1st Floor Master Suite, Elevator, Narrow Lot, Den-Office-Library-Study

Five Sets	Eight Sets	Reproducible	PDF File	CAD
\$825	\$950	\$1,350	\$1,295	\$1,850

Main Level



2nd Level



Lower Level

