

Architectural Designs ...selling quality house plans for over 30 years.

Plan W31114D: Stone Cottage with Courtyard



House plans are Copyright © 2009 by our architects and designers.

- A romantic balcony across the front of this rustic stone cottage evokes the charm of Europe in this unique home plan.
- Courtyard views off the loggia and guest room/study encourage you to enjoy the greenery. With a ceiling that vaults to 22'6", the spacious great room with fireplace is meant to impress.
- Placed between the formal dining room with tray ceiling and the informal breakfast nook, the kitchen is open to the great room for fabulous views.
- Another vaulted ceiling graces the master suite with its two walk-in closets and spa bath.
- Upstairs, two bedrooms and two baths share space with a bonus room and optional fifth bedroom.

Style: European, Luxury, Premium Collection

Total Living Area: 3865

Main Flr.: 2826

2nd Flr.: 1039

Basement Unfinished: 2,826 sq. ft.

Bonus: 332 sq. ft.

Front Porch: 141 sq. ft.

Rear Porch: 333 sq. ft.

Total Square Feet: 8,105 sq. ft.

Attached Garage: 3 Car, 749 sq. ft.

Bedrooms: 4, 3, 5

Full Bathrooms: 4

Half Bathrooms: 1

Width: 96'5"

Depth: 63'1"

Maximum Ridge Height: 31'6"

Exterior Walls: 2x4

Ceiling Height:

Main Floor: 10'

2nd Floor: 9'

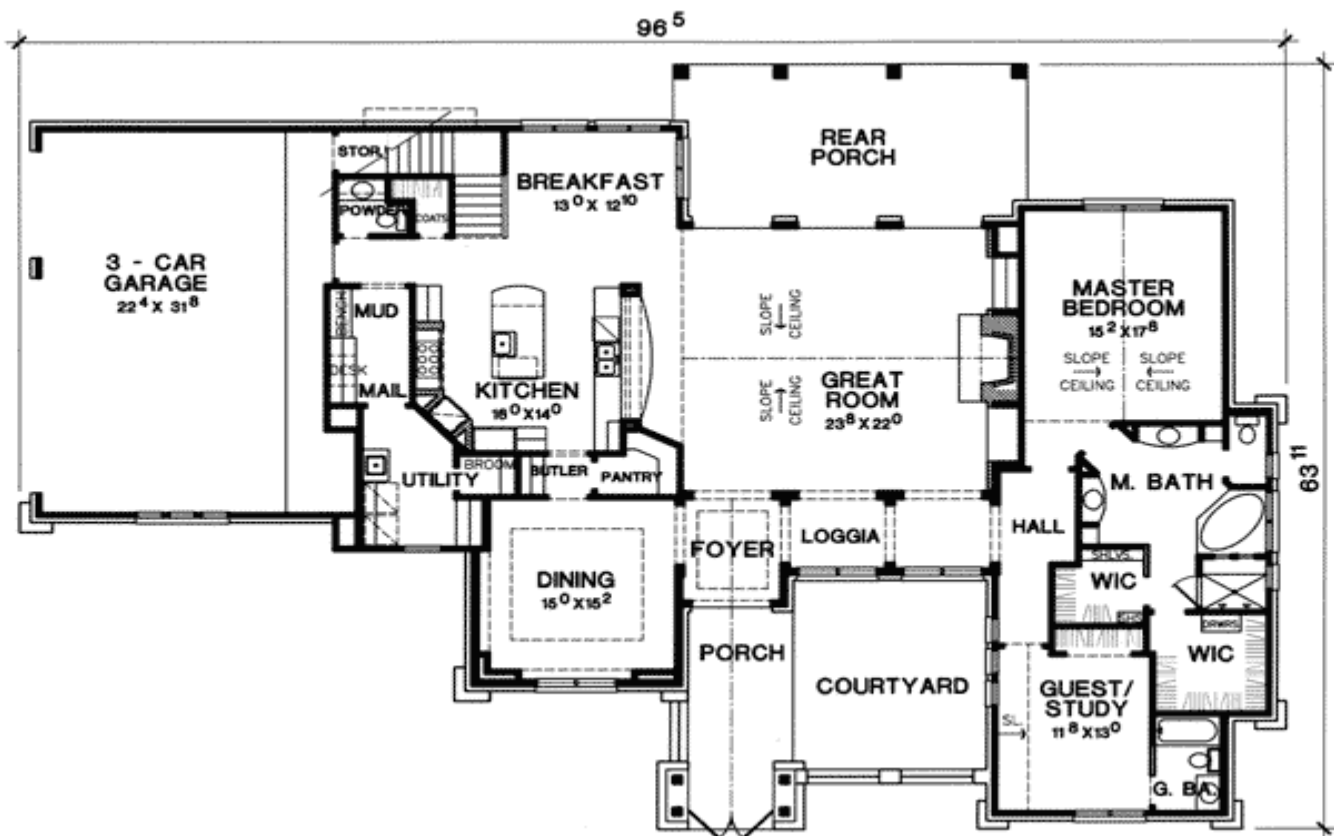
Other: 22'6"" Sloped Great Room; 12' Sloped Guest Room; Recessed Dining Room

Standard Foundations: Slab, Basement, Crawl

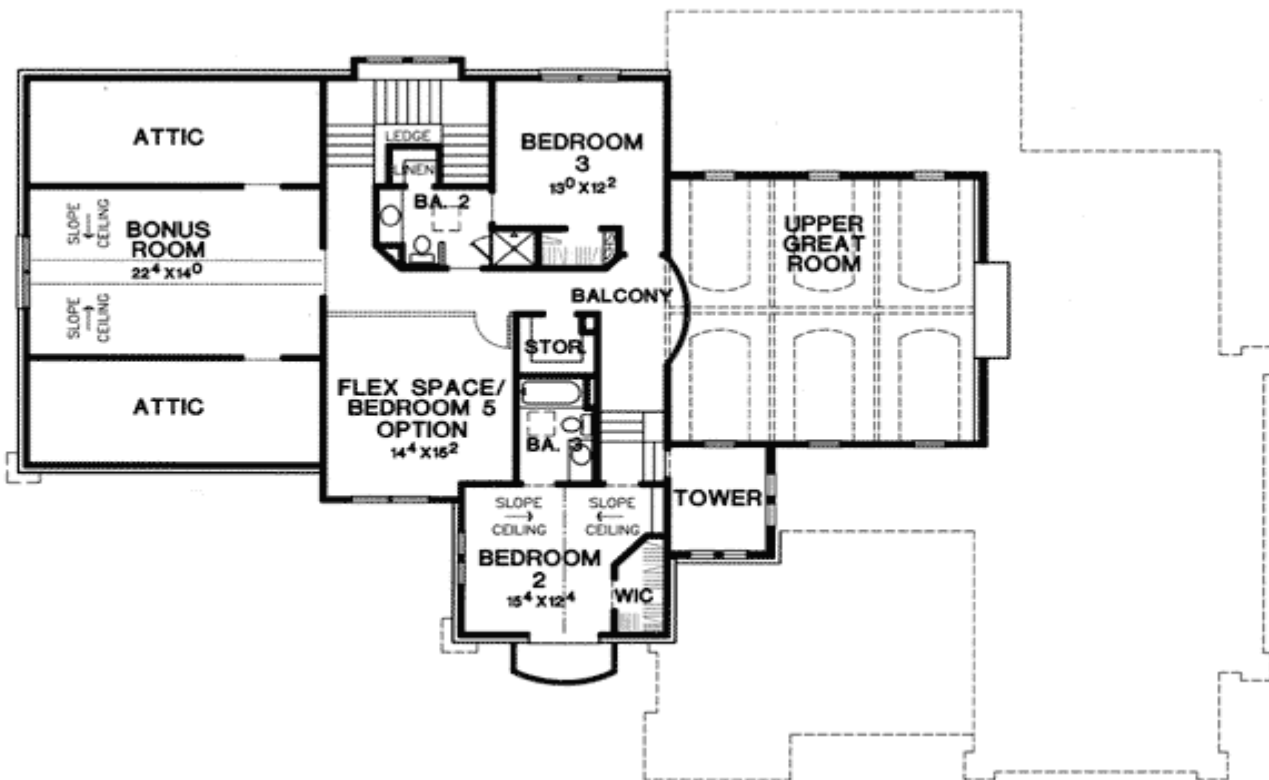
Special Features: CAD Available, Bonus Room, Photo Gallery, 1st Floor Master Suite, Butler Walk-in Pantry, Court Yard, Den-Office-Library-Study, Corner Lot

One Set	Five Sets	Eight Sets	Reproducible	CAD
\$785	\$845	\$910	\$1,145	\$2,690

Main Level



2nd Level



Photo

Rear view with nook modified by owner



Elevation #2



Rear View



Rear Elevation

Interior



Great Room



Great Room customized by owner

Dining Room



Kitchen

