

Plan W40753DB: Farmhouse Design Has Three Porches



House plans are Copyright © 2009 by our architects and designers.

- With an expansive covered porch in front and another covered porch plus a vaulted screened porch in back, this farmhouse design allows for maximum outdoor living.
- Flanking the foyer are the formal dining room and a study or fourth bedroom. If the bedroom option is chosen, a shower can be added to the powder room.
- The living room rises for 11'. The kitchen includes a pantry closet and an island with an eating bar. The nook overlooks the rear porch.
- The master suite accesses the rear porch and contains a walk-in closet and a five-fixture bath.
- Upstairs, two family bedrooms, each with a walk-in closet, share the second full bath. Bonus space lies over the side-entry garage.
- Ceilings: 9' standard.
- NOTE: This house plan is designed for Structural Insulated Panel (SIP) construction. See plan 4138DB for the 2x4 version of this home plan.

Style: Country, Farmhouse

Total Living Area: 1980

Main Flr.: 1467

2nd Flr.: 513

Bonus: 490 sq. ft.

Front Porch: 1,053 sq. ft.

Rear Porch: 194 sq. ft.

Total Square Feet: 4,235 sq. ft.

Attached Garage: 2 Car, 518 sq. ft.

Bedrooms: 3, 4

Full Bathrooms: 2

Half Bathrooms: 1

Width: 67'

Depth: 51'

Maximum Ridge Height: 32'

Exterior Walls: SIP

Ceiling Height:

 Main Floor: 9'

 2nd Floor: 8'

Standard Foundations: Slab

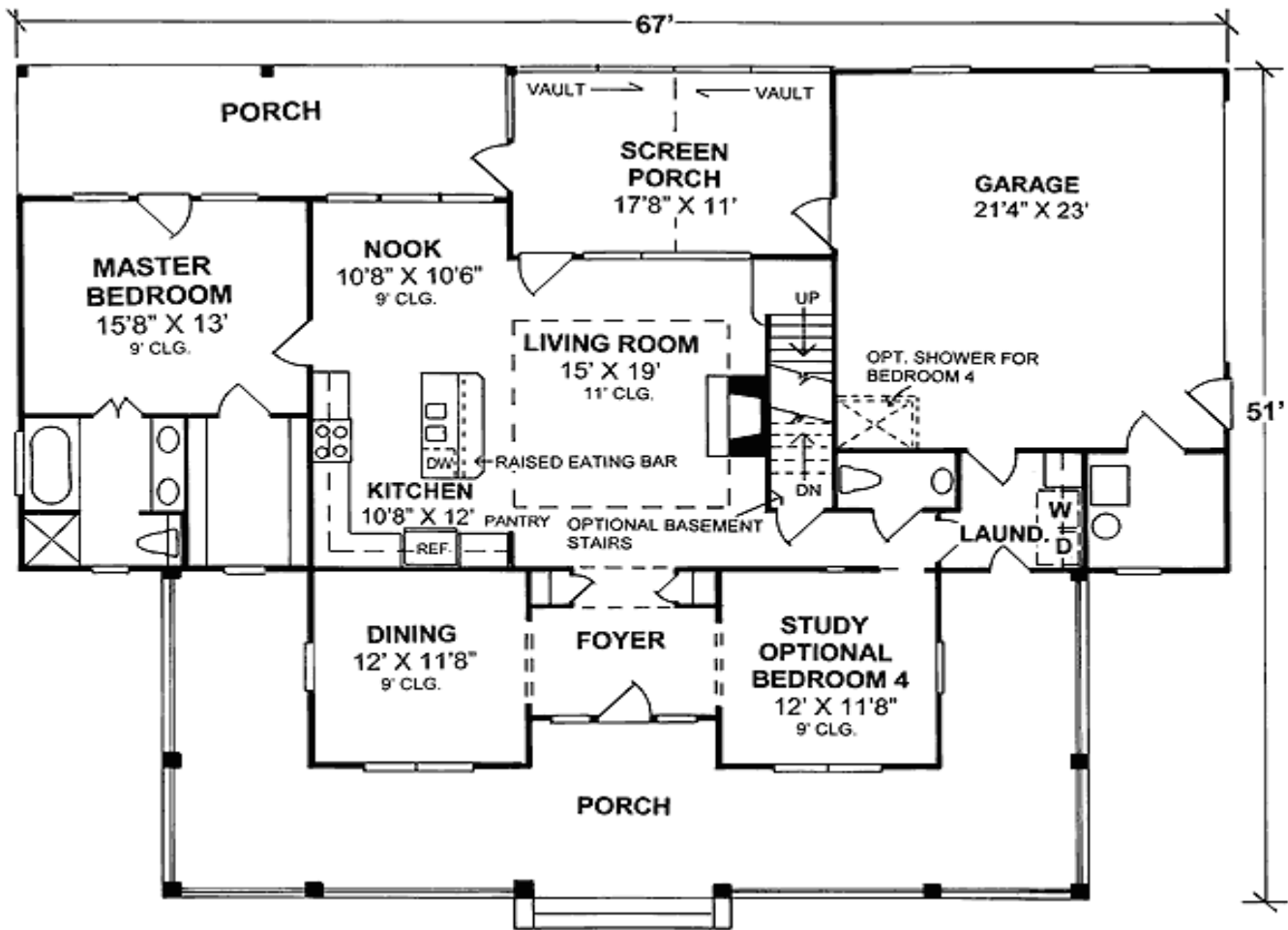
Alternate Foundations: Basement (\$150), Crawl (\$150)

Special Features: PDF, CAD Available, Bonus Room, 1st Floor Master Suite, Unlimited Build, Corner Lot, Den-Office-Library-Study, Split Bedrooms, Wrap Around Porch

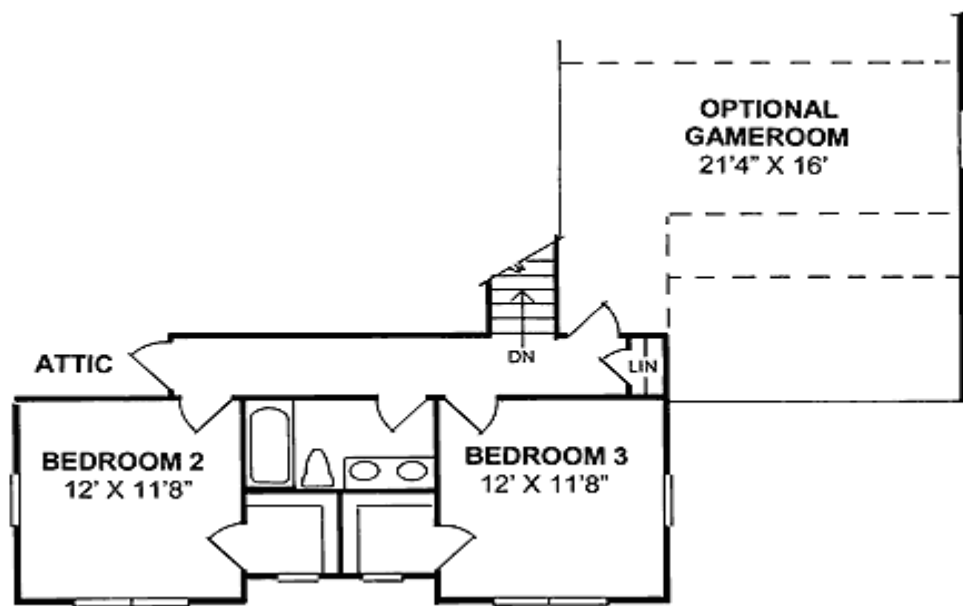
One Set	Five Sets	Eight Sets	Reproducible	PDF File	CAD
\$625	\$775	\$835	\$775	\$775	\$1,075

Architectural Designs ...selling quality house plans for over 30 years.

Main Level



2nd Level



Rear View

