

Architectural Designs ...selling quality house plans for over 30 years.

Plan W3004D: Vacation Home or Guest Cottage



House plans are Copyright © 2009 by our architects and designers.

- With its covered 6' deep front porch, twin dormers and sturdy stone chimney, this country cottage presents a friendly face. The dwelling would make a wonderful vacation retreat; alternatively, it could be used as guest quarters.
- The open floor plan groups the main living areas in one large space. The living room includes a fireplace, while the dining room overlooks a second 8' deep covered porch in back. An angled counter with an eating bar separates the kitchen from the rest of the area. A 3'x10' utility room provides convenient storage.
- The first-floor bathroom can be entered from either the back hall or the dressing area of the first floor master bedroom, which includes another sink and a walk-in closet.
- Upstairs, two more bedrooms share the second full bath.
- Foundation options: basement, slab or crawl space. Please specify when ordering.
- Related Plan: For a larger version, see house plan 3093D.

Style: Cottage, Country, Southern, Vacation

Total Living Area: 1157

Main Flr.: 819

2nd Flr.: 338

Basement Unfinished: 819 sq. ft.

Total Square Feet: 1,976 sq. ft.

Bedrooms: 3

Full Bathrooms: 2

Width: 35'10"

Depth: 38'

Maximum Ridge Height: 22'

Exterior Walls: 2x4

Ceiling Height:

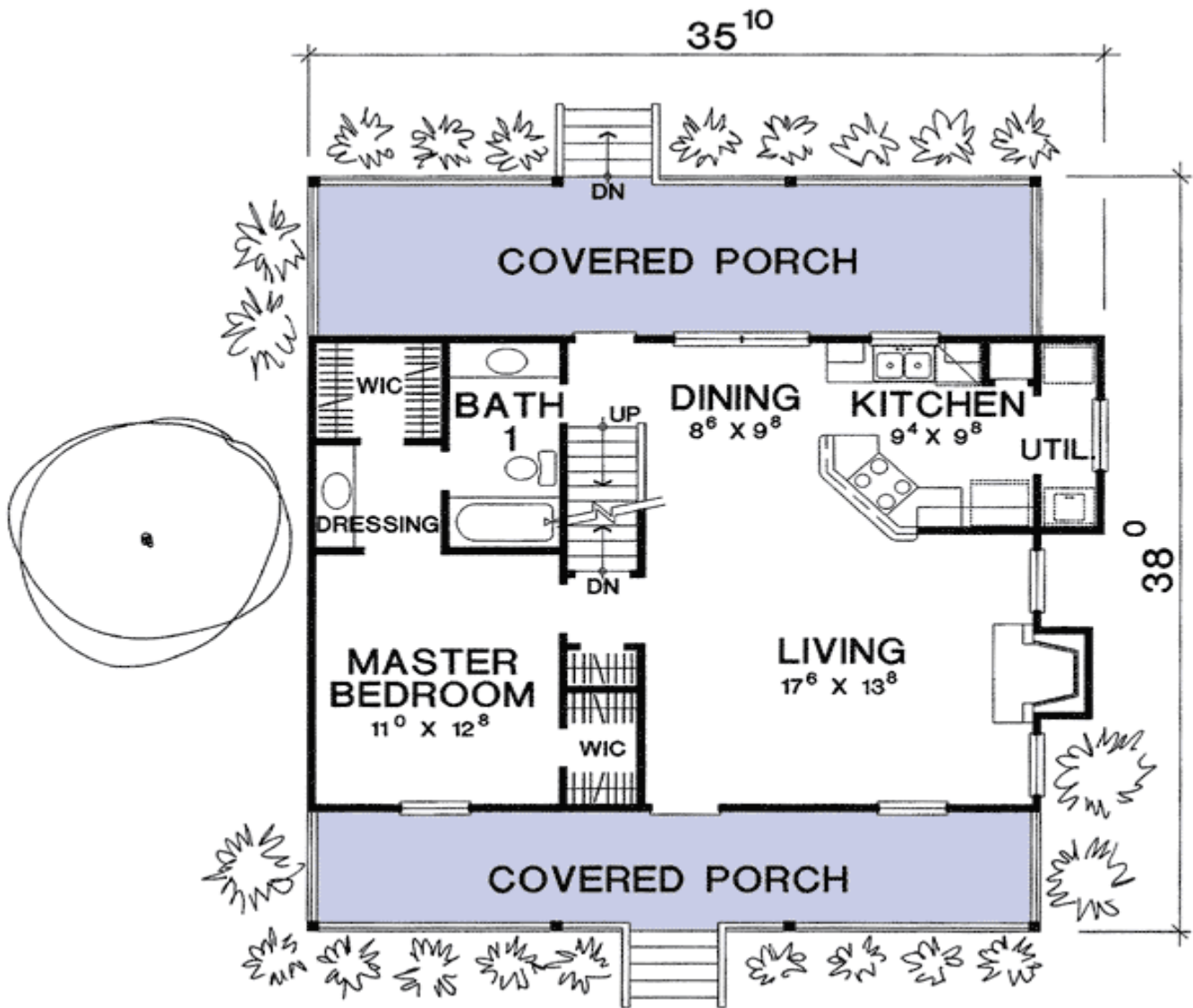
2nd Floor: 7'9"

Standard Foundations: Slab, Basement, Crawl

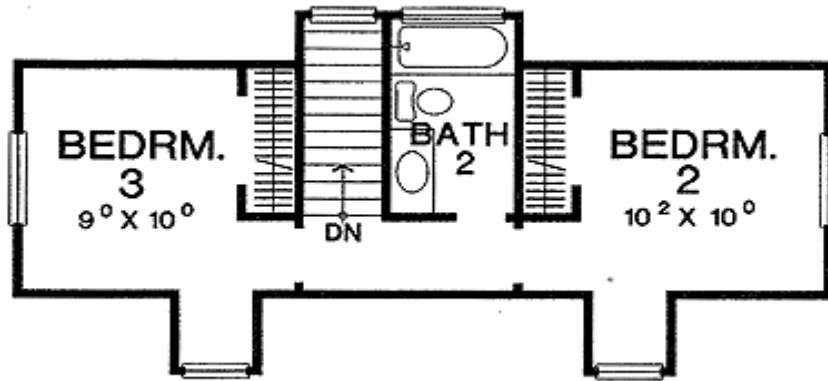
Special Features: 1st Floor Master Suite, Photo Gallery, Narrow Lot, CAD Available

One Set	Five Sets	Eight Sets	Reproducible	CAD
\$510	\$565	\$620	\$795	\$1,765

Main Level



2nd Level



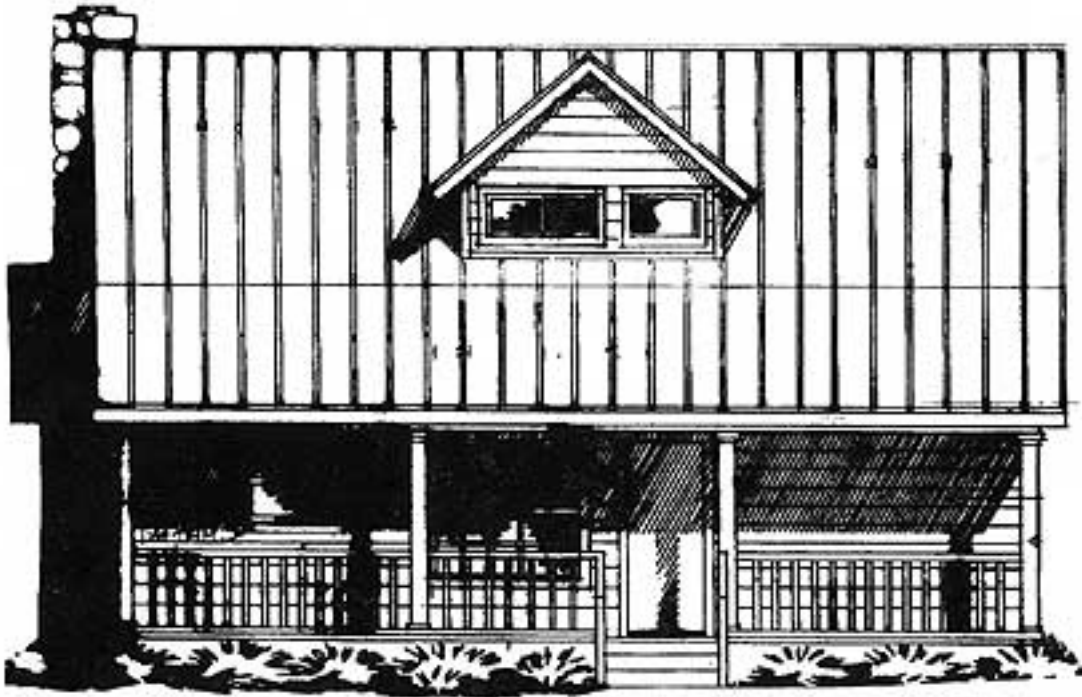
Architectural Designs ...selling quality house plans for over 30 years.

Photo



Wraparound deck added by owner

Rear View



REAR ELEVATION

Living Room



Kitchen



Dining Room bumped out by builder

Kitchen Vw2



Bedroom #2



Bedroom #3

