

Architectural Designs ...selling quality house plans for over 30 years.

Plan W59032ND: Natural Wood Comfort



House plans are Copyright © 2009 by our architects and designers.

- This log home plan displays beautiful windows and a covered entry porch. The foyer leads into an inviting living room with fireplace.
- The dining room opens to the breakfast nook with walk-in pantry and kitchen with grilling porch nearby.
- The office is very sensible with built-in corner desk, ample closet space and private bath.
- The natural wood and fireplace in the secluded master suite provides comfort and. The suite has private access to a covered porch and gazebo. The master bath features double vanities, a whirlpool bath and shower.
- Upstairs is a loft, two bedrooms, one with a private bath.
- Ceilings: 8' standard.
- Foundation: Basement, crawl space, daylight basement. Please specify your preference when ordering.

Style: Log, Mountain

Total Living Area: 3537

Main Flr.: 2216

2nd Flr.: 1321

Porch, Combined: 1,033 sq. ft.

Total Square Feet: 5,099 sq. ft.

Attached Garage: 2 Car, 529 sq. ft.

Bedrooms: 3

Full Bathrooms: 3

Half Bathrooms: 1

Width: 82'

Depth: 100'5"

Maximum Ridge Height: 27'8"

Exterior Walls: Log

Ceiling Height:

Main Floor: 8'

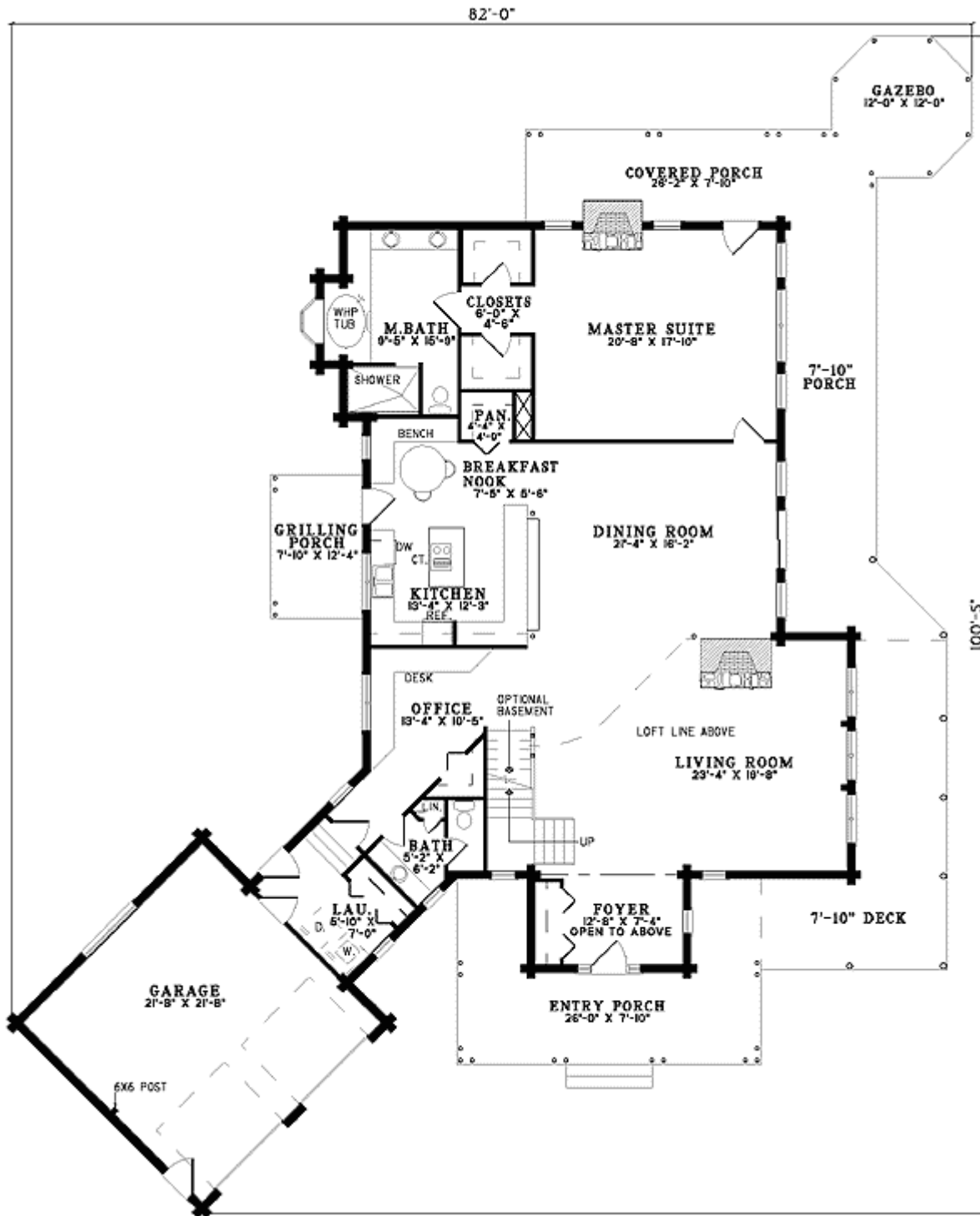
Standard Foundations: Crawl

Alternate Foundations: Walkout (\$250), Basement (\$250)

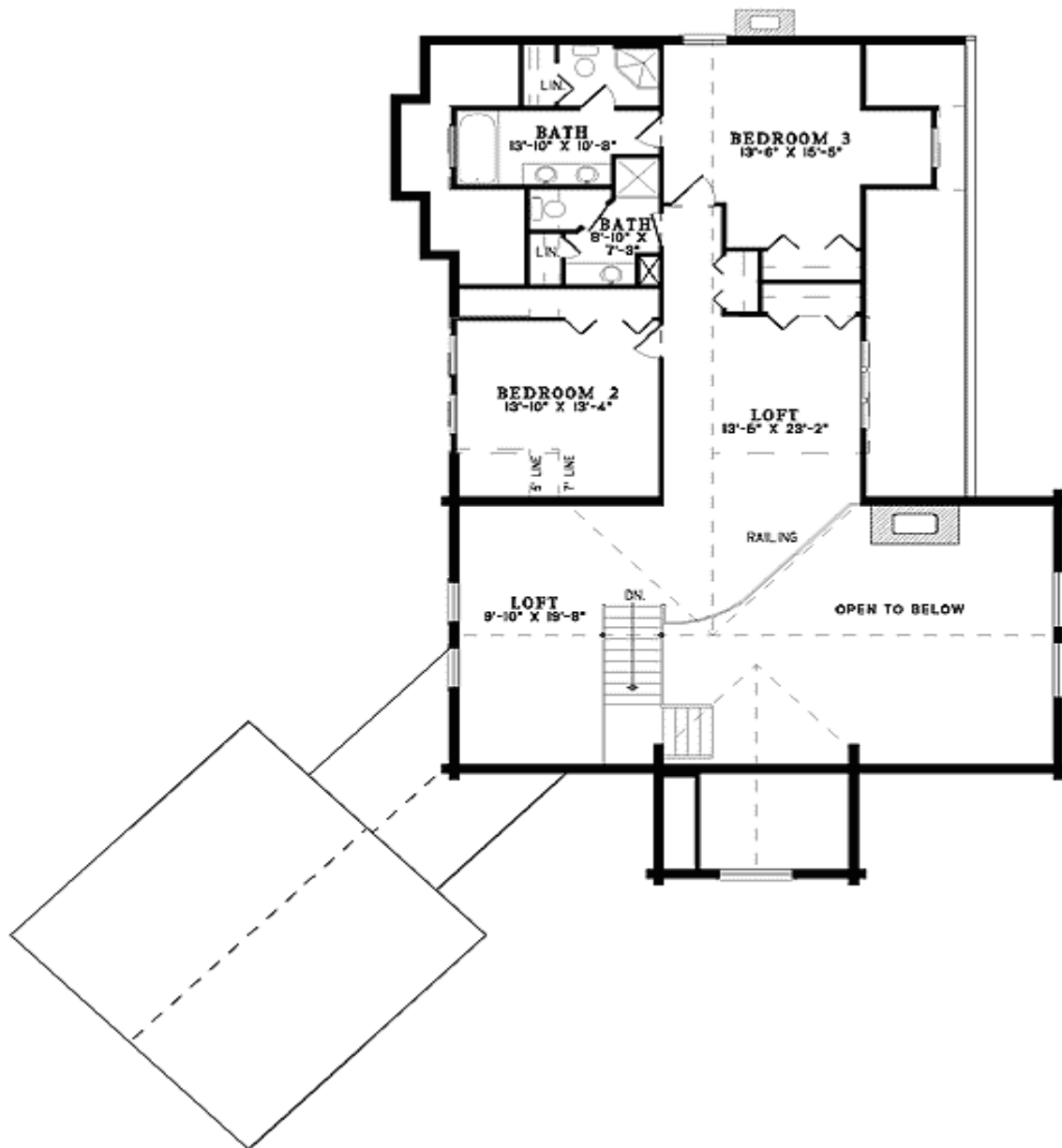
Special Features: PDF, 1st Floor Master Suite

One Set	Five Sets	Eight Sets	Reproducible	PDF File	CAD
\$665	\$810	\$860	\$1,150	\$1,150	\$1,950

Main Level



2nd Level



Elevation #2

Front Elevation



Left Side



Right Side



Rear View

