

Architectural Designs ...selling quality house plans for over 30 years.

Plan W15019NC



House plans are Copyright © 2009 by our architects and designers.

Style: Beach, Low Country, Southern, Vacation

Total Living Area: 3763

Main Flr.: 1720

2nd Flr.: 1190

Lower Level: 853

Front Porch: 480 sq. ft.

Rear Porch: 145 sq. ft.

Deck: 212 sq. ft.

Balcony/Veranda: 193 sq. ft.

Covered Patio: 837 sq. ft.

Total Square Feet: 6,418 sq. ft.

Attached Garage: 2 Car, 788 sq. ft.

Bedrooms: 4

Full Bathrooms: 4

Half Bathrooms: 2

Width: 47'

Depth: 63'4"

Maximum Ridge Height: 35'

Exterior Walls: 2x4

Ceiling Height:

Main Floor: 8'

2nd Floor: 9'

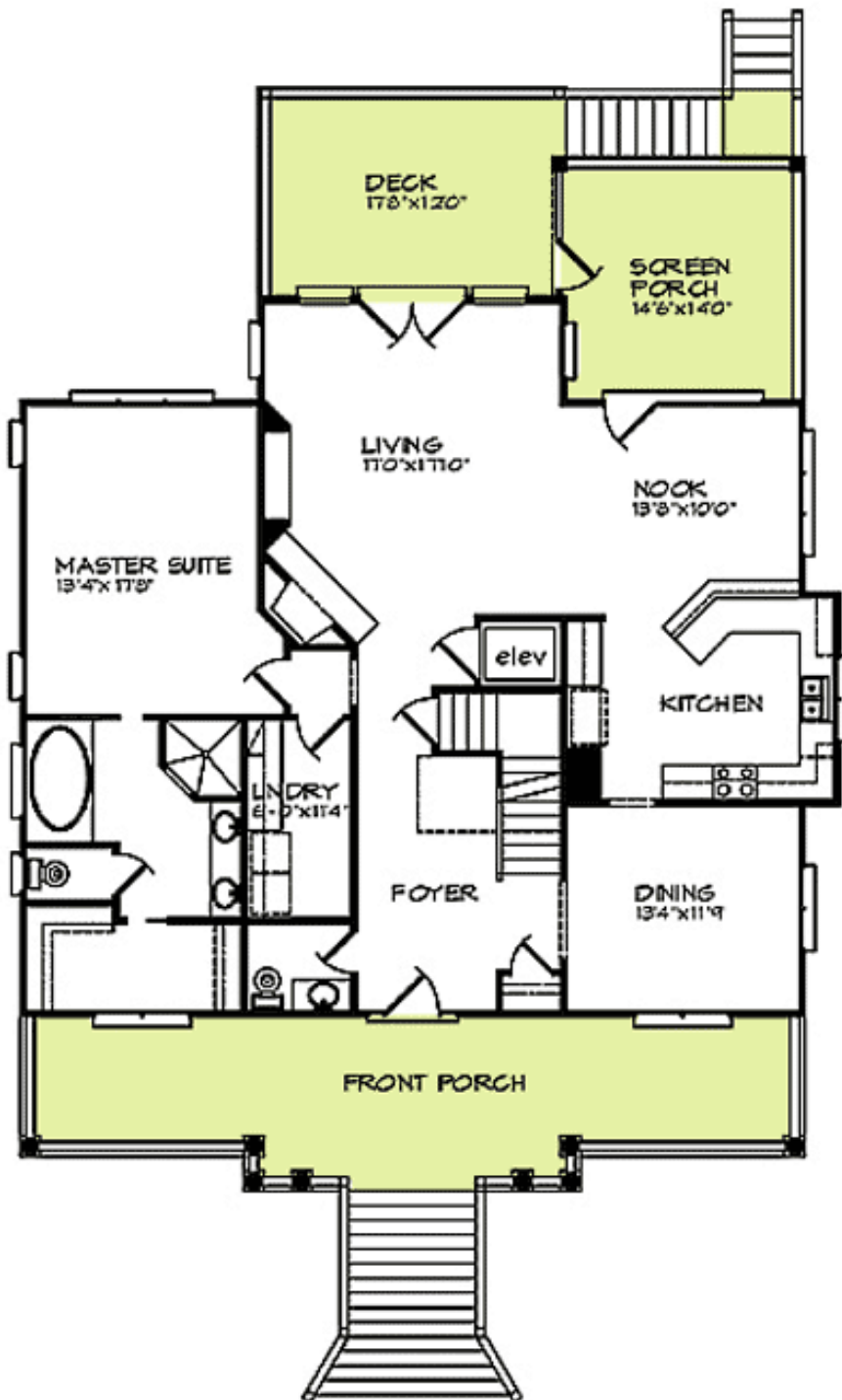
Other: 8' Lower Level

Standard Foundations: Slab

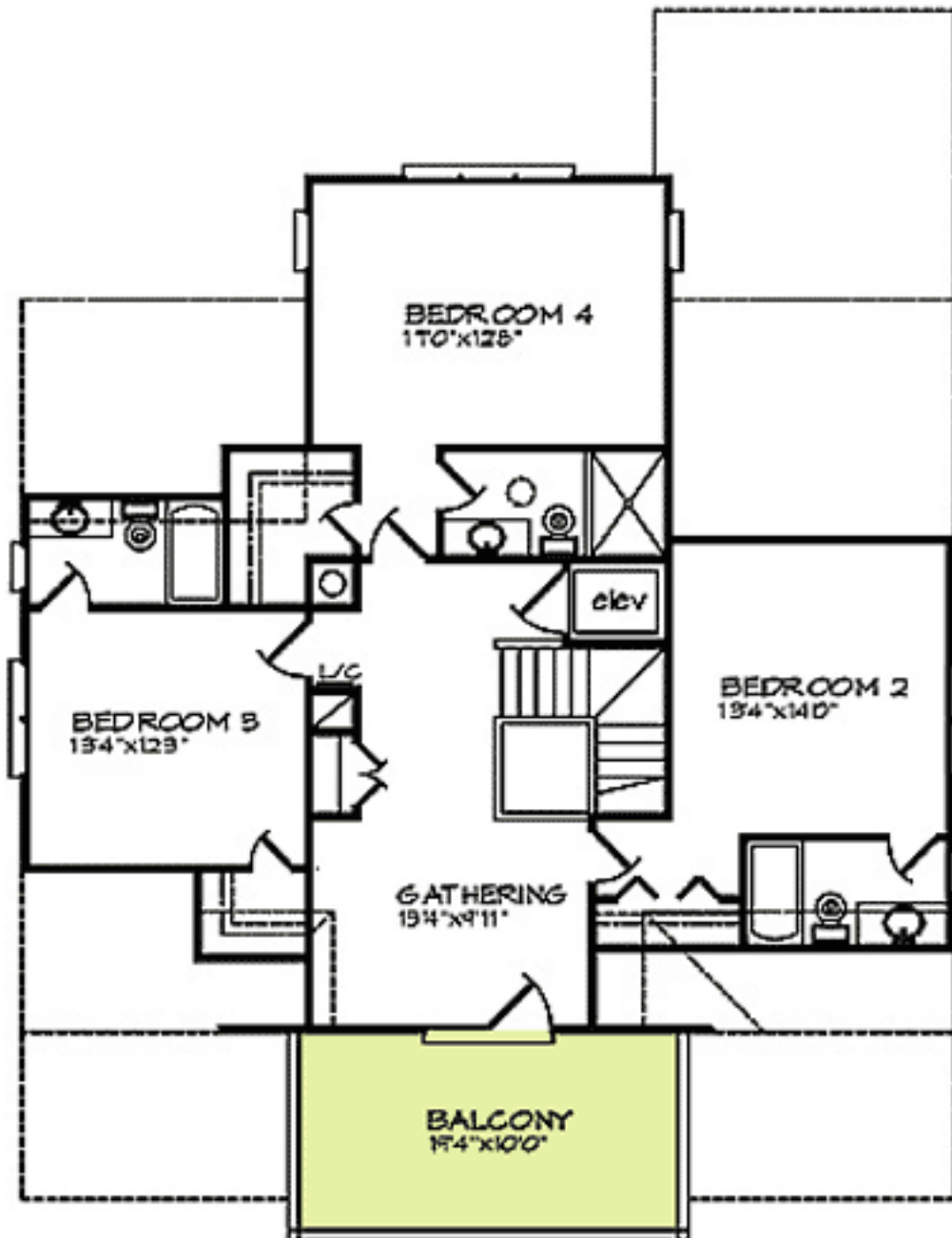
Special Features: Drive Under Garage, CAD Available, 1st Floor Master Suite, Narrow Lot, Elevator, PDF

Five Sets	Eight Sets	Reproducible	PDF File	CAD
\$825	\$950	\$1,350	\$1,295	\$1,850

Main Level



2nd Level



Lower Level

