

Plan W9805SW: Vacation Hideaway



House plans are Copyright © 2009 by our architects and designers.

- Complete with extensive decking on both the first and second floors, this vacation cottage is a true retreat from the everyday world.
- On the first floor, a woodstove warms the great room, part of which is overlooked by the studio above. French doors open to the deck. A guest room, full bath and laundry closet complete the floor.
- More French doors in the studio upstairs access the second-floor deck. The master bedroom and bath are also found upstairs.
- Related Plans: Need an extra bedroom? See house plan 9812SW.
- Also see these related house plans: 9801SW, 9807SW, 9808SW and 9810SW.

Style: Canadian, Cottage, Mountain, Vacation

Total Living Area: 1333

Main Flr.: 768

2nd Flr.: 565

Porch, Combined: 328 sq. ft.

Deck: 336 sq. ft.

Total Square Feet: 1,997 sq. ft.

Bedrooms: 2

Full Bathrooms: 2

Width: 36'

Depth: 44'6"

Maximum Ridge Height: 25'

Exterior Walls: 2x6

Ceiling Height:

Main Floor: 8'

2nd Floor: 10'

Standard Foundations: Crawl

Special Features: PDF, Photo Gallery, Narrow Lot, Loft, Wrap Around Porch

One Set
\$395

Five Sets
\$460

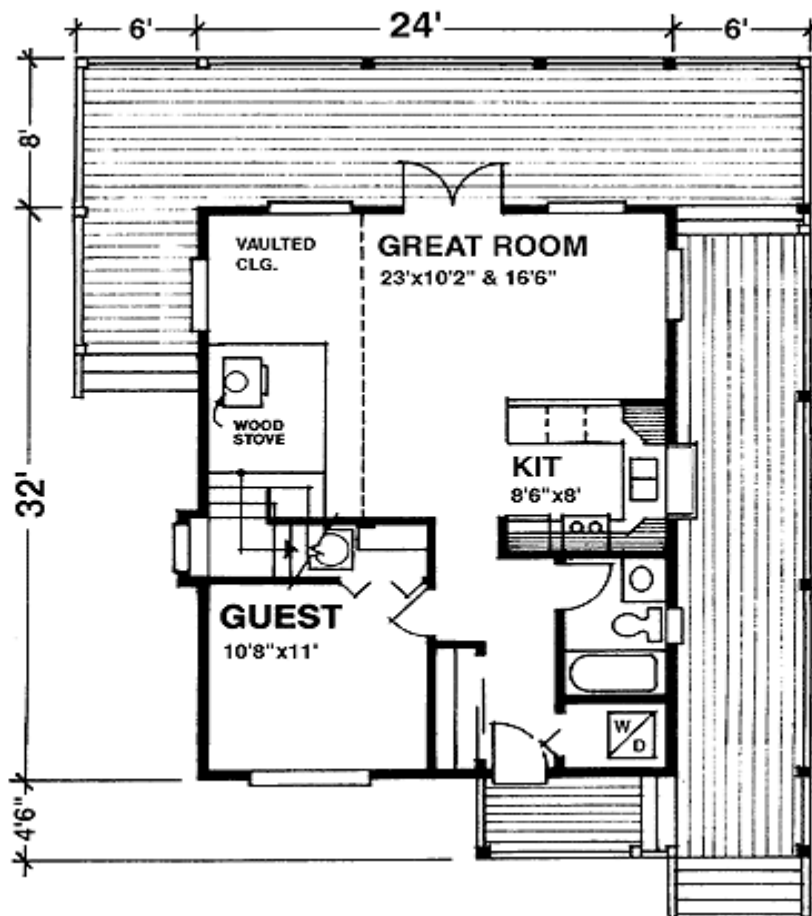
Eight Sets
\$505

Reproducible
\$605

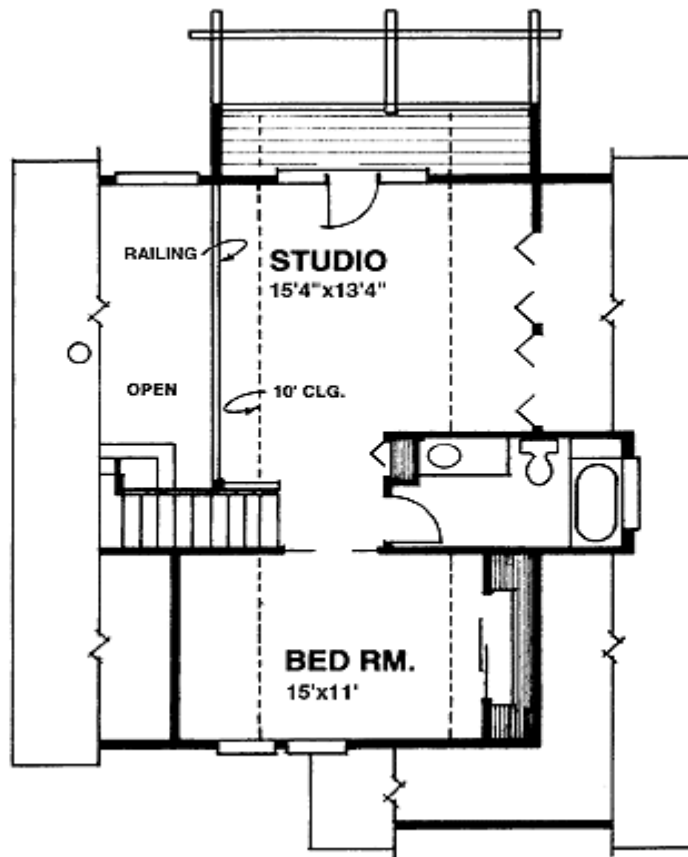
PDF File
\$605

CAD
\$805

Main Level



2nd Level



Architectural Designs ...selling quality house plans for over 30 years.

Photo



Photo #2



Plan modified by builder

Elevation #2



Front Elevation

Rear View



Sides/Rear

