

Architectural Designs ...selling quality house plans for over 30 years.

Plan W59298ND: Low-Country Home Plan



House plans are Copyright © 2009 by our architects and designers.

- This low country home plan has a wrap around porch that everyone will fall in love with.
- Upon entering, the beautiful fireplace and media center make for great entertaining.
- The hearth room's fireplace allows for more intimate gatherings, which allows for a more intimate gatherings.
- Notice the ample counter space in the kitchen as well as a convenient island bar.
- A large master suite provides plenty of storage space with your master bath sporting a magnificent claw-foot soaking bathtub.
- Two additional bedrooms share a walk-through bathroom. Upstairs, find a full bath and large game room.
- Related Plans: For an alternate master suite arrangement, see house plan 5904ND.
- For a one-story plan, see 59376ND.
- For two-story plans, see 59637ND and 59707ND.

Style: Country, Low Country, Southern

Total Living Area: 1921

Main Flr.: 1921

Bonus: 812 sq. ft.

Porch, Combined: 959 sq. ft.

Total Square Feet: 4,197 sq. ft.

Attached Garage: 2 Car, 505 sq. ft.

Bedrooms: 3

Full Bathrooms: 3

Width: 84'

Depth: 55'6"

Maximum Ridge Height: 20'4"

Exterior Walls: 2x4

Ceiling Height:

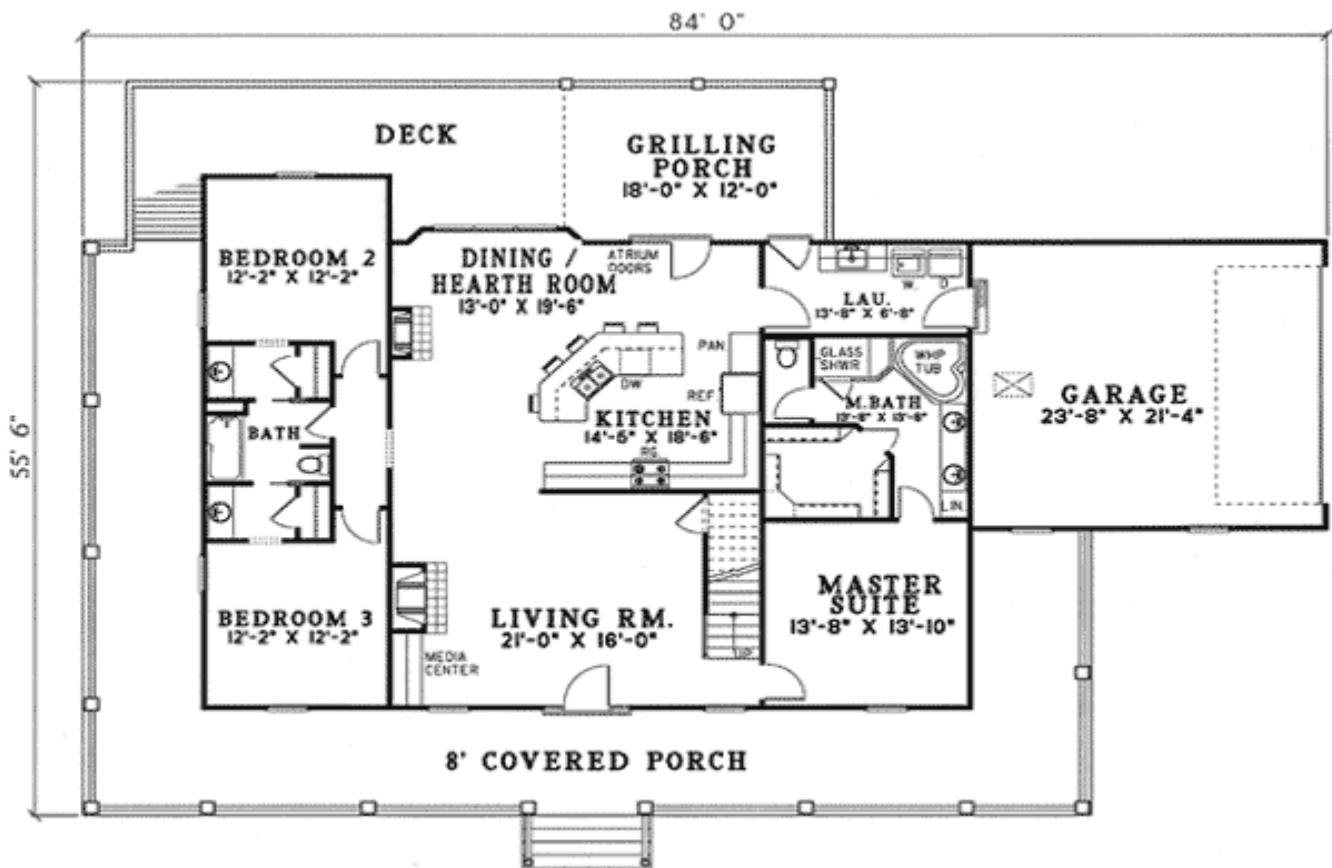
Main Floor: 8'

2nd Floor: 8'

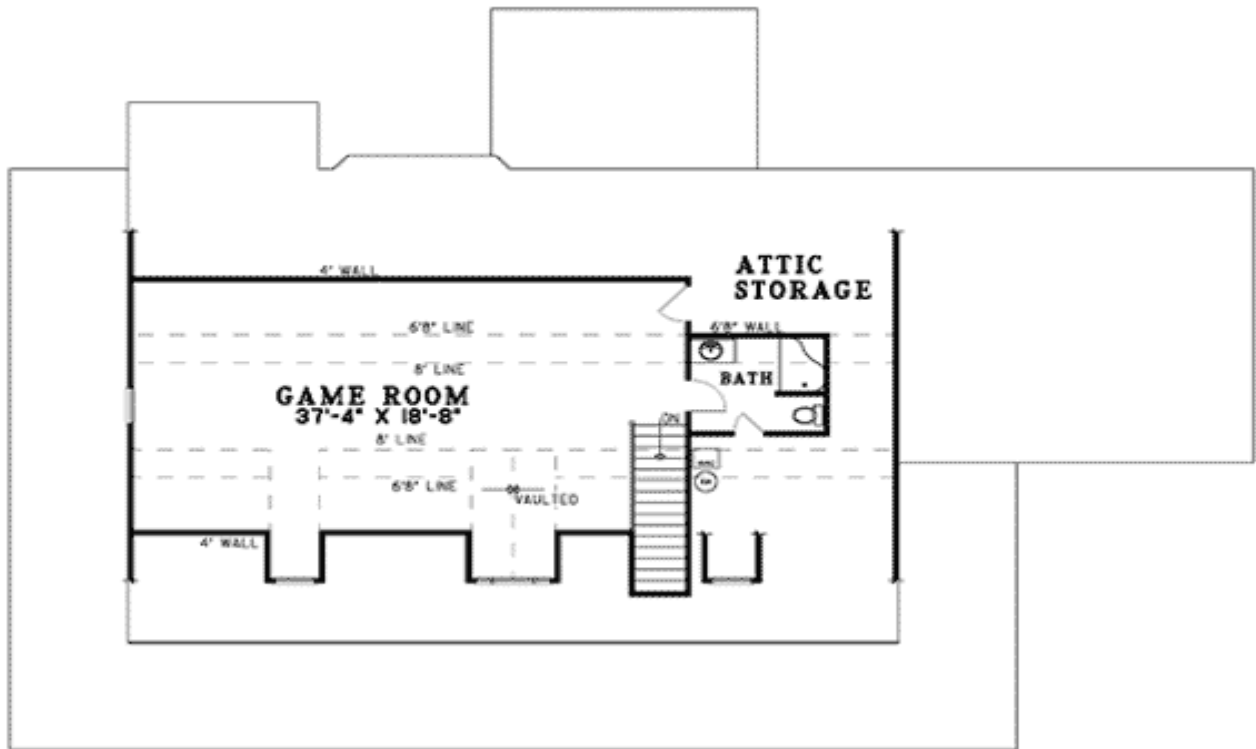
Standard Foundations: Daylight, Slab, Basement, Crawl
Alternate Foundations: Walkout (\$250), Basement (\$250)
Special Features: Bonus Room, CAD Available, PDF, Sloping Lot

One Set	Five Sets	Eight Sets	Reproducible	PDF File	CAD
\$605	\$710	\$750	\$970	\$970	\$1,650

Main Level



2nd Level



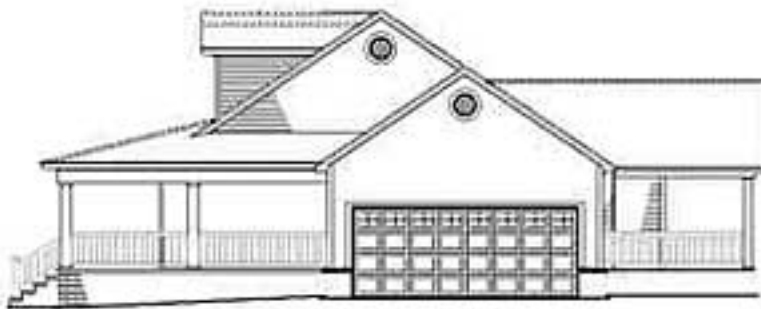
Sides/Rear



REAR ELEVATION



LEFT ELEVATION



RIGHT ELEVATION