

Plan W6545RF: Four Bedroom Country Farmhouse Plan



House plans are Copyright © 2009 by our architects and designers.

- This four-bedroom country farmhouse plan is a family-friendly design. A flexible room on the first floor could serve as another bedroom, an office or a place for visiting guests.
- Built-ins are found throughout the house, and wide covered porches provide outdoor living space in both front and back.
- The great room has a corner fireplace and opens to the rear deck. The bayed nook has plenty of windows to enjoy the rear view. The kitchen is complete with an extended counter, island, pantry and desk.
- A tray ceiling tops the private master bedroom which has access to the side covered porch. The luxurious master bath features a garden spa tub, tiled shower, private commode, dual sinks and a large walk-in closet.
- Upstairs, two bedrooms (one with a vaulted ceiling and walk-in closet) share a bath. A vaulted rec room, sitting area and large bonus room and storage space round out the home plan.
- Ceilings: 9' first floor; 8' second floor.
- Foundation: basement, slab or crawl space. Specify when ordering.
- Related Plans: Need a two-car garage? See house plan 6544RF.
- Want to build this in reverse? See house plan 6543RF.
- Need another bedroom? See house plan 6539RF (3,005 sq. ft.).

Style: Country, Farmhouse

Total Living Area: 2302

Main Flr.: 1570

2nd Flr.: 732

Basement Unfinished: 1,570 sq. ft.

Bonus: 403 sq. ft.

Porch, Combined: 670 sq. ft.

Storage: 241 sq. ft.

Total Square Feet: 6,133 sq. ft.

Attached Garage: 3 Car, 947 sq. ft.

Bedrooms: 4

Full Bathrooms: 2

Half Bathrooms: 1

Width: 71'

Depth: 53'

Maximum Ridge Height: 29'

Exterior Walls: 2x4

Ceiling Height:

Main Floor: 9'

2nd Floor: 8'

Other: 10' Tray MBR; Vaulted Foyer & Family Room

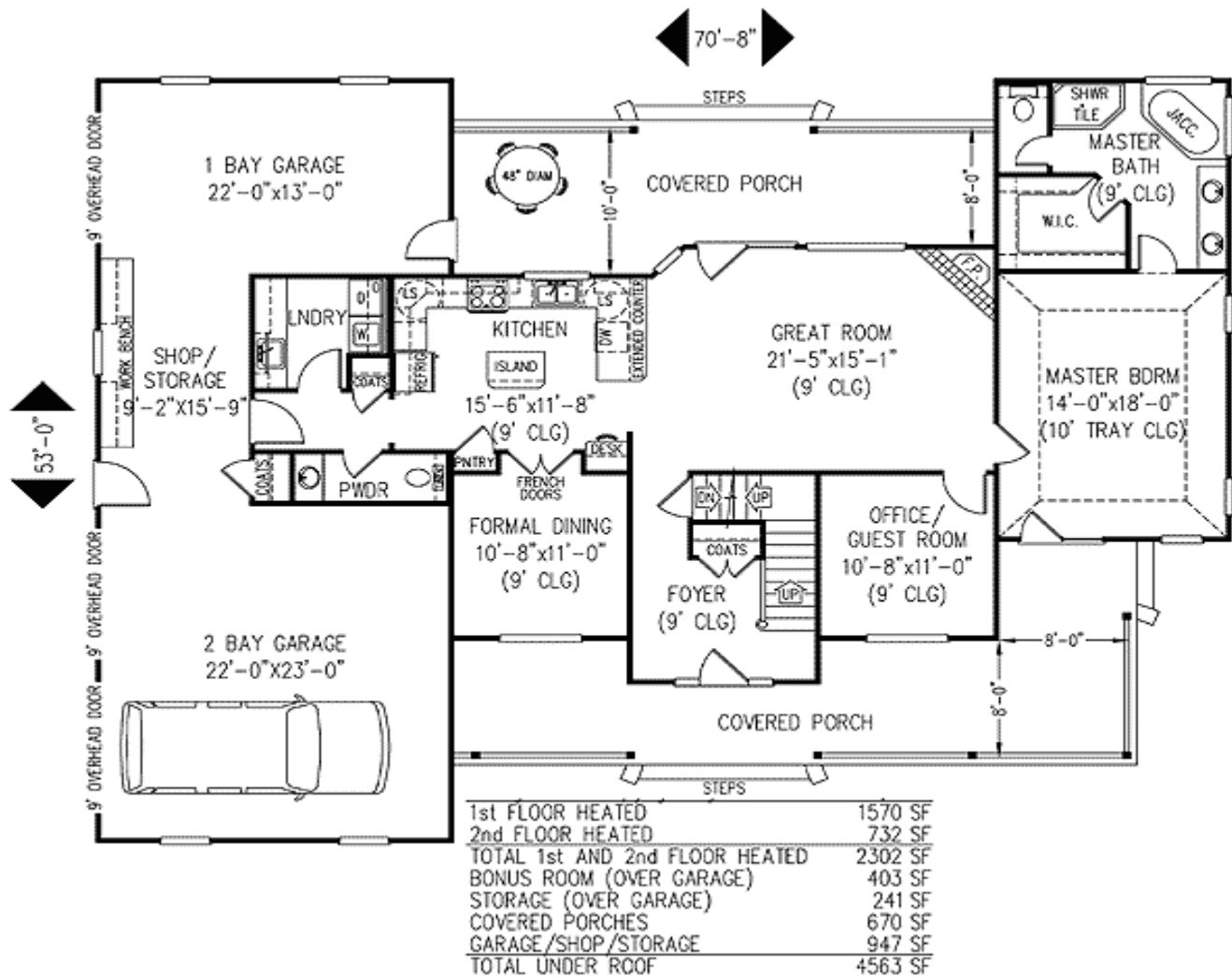
Standard Foundations: Slab, Basement, Crawl

Special Features: Den-Office-Library-Study, Photo Gallery, Media-Game-Home Theater, Bonus Room, 1st Floor Master Suite, CAD Available

One Set	Five Sets	Eight Sets	Reproducible	CAD
\$665	\$725	\$765	\$915	\$1,315

Architectural Designs ...selling quality house plans for over 30 years.

Main Level

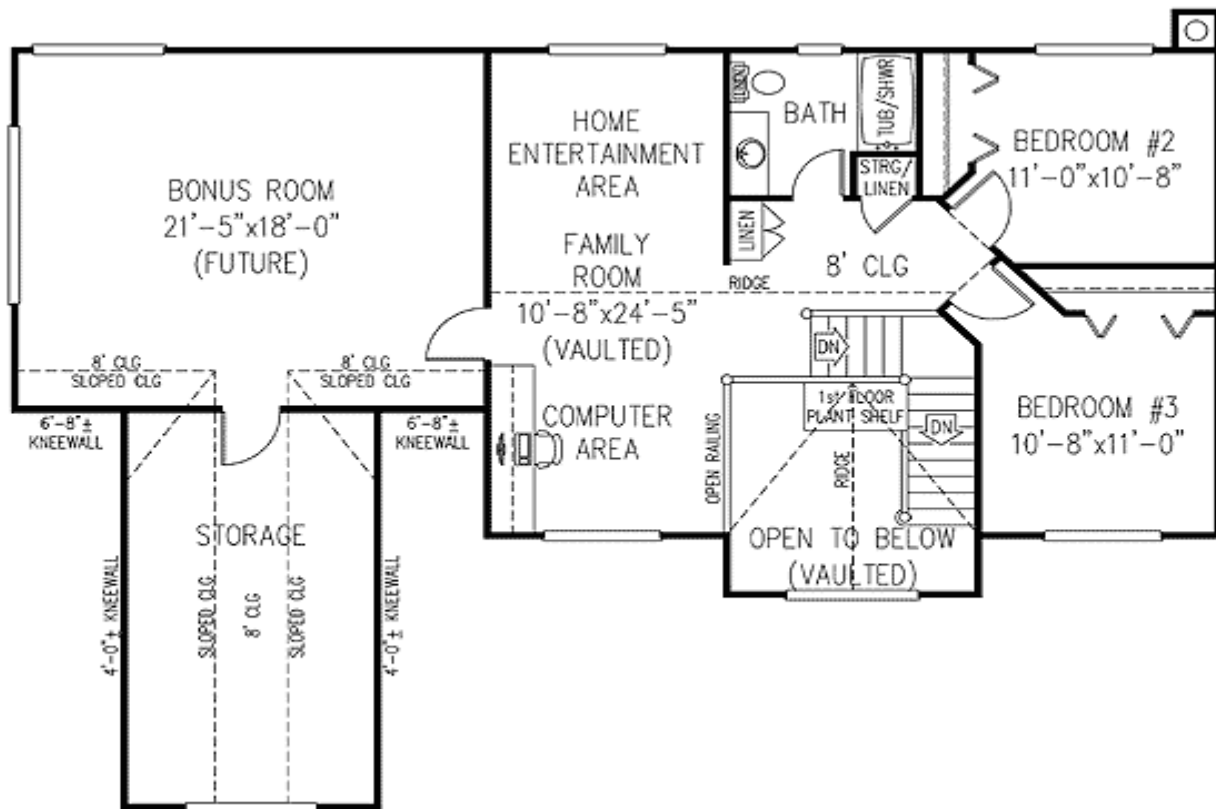


Architectural Designs :: 57 Danbury Road :: Wilton, CT 06897

USA & Canada 1-800-854-7852 or 1-877-229-2447 :: International 262-521-4596

Fax 1-203-761-8600 :: Email: info@architecturaldesigns.com

2nd Level



Architectural Designs ...selling quality house plans for over 30 years.

Photo



Sides/Rear



Rear elevation



Left elevation



Right elevation