

Architectural Designs ...selling quality house plans for over 30 years.

Plan W6480HD: Very Livable Log Home



House plans are Copyright © 2009 by our architects and designers.

- A covered porch in front and a large deck-lanai across the rear add to the livability of this attractive log home plan.
- Sloped ceilings top the family room and the master bedroom, while two window walls and three skylights are featured in the sunroom.
- The spacious, secluded master suite includes a large walk-in closet with a window and a luxurious bath with twin sinks separated by make-up space, a garden tub and a separate shower. Both the master bedroom and the family room access the deck.
- On the other side of the house from the master suite, the second full bath is placed between two family bedrooms.
- In the open living area, a stepped ceiling defines the formal dining room. Open to the nook and the family room with fireplace, the kitchen easily serves the dining room as well.
- A large bonus room lies upstairs.
- Related Plans: For a version with cedar siding, see house plan 6490HD. For a version with vertical siding, see 6491HD.

Style: Log

Total Living Area: 2326

Main Flr.: 2326

Bonus: 358 sq. ft.

Front Porch: 108 sq. ft.

Deck: 718 sq. ft.

Total Square Feet: 4,038 sq. ft.

Attached Garage: 2 Car, 528 sq. ft.

Bedrooms: 3

Full Bathrooms: 2

Half Bathrooms: 1

Width: 64'

Depth: 72'4"

Maximum Ridge Height: 25'6"

Exterior Walls: Log

Ceiling Height:

Main Floor: 10'

Other: 10' to 11' Tray Dining Room; 14'-15' Vaulted Family Room; 13' Vaulted MBR

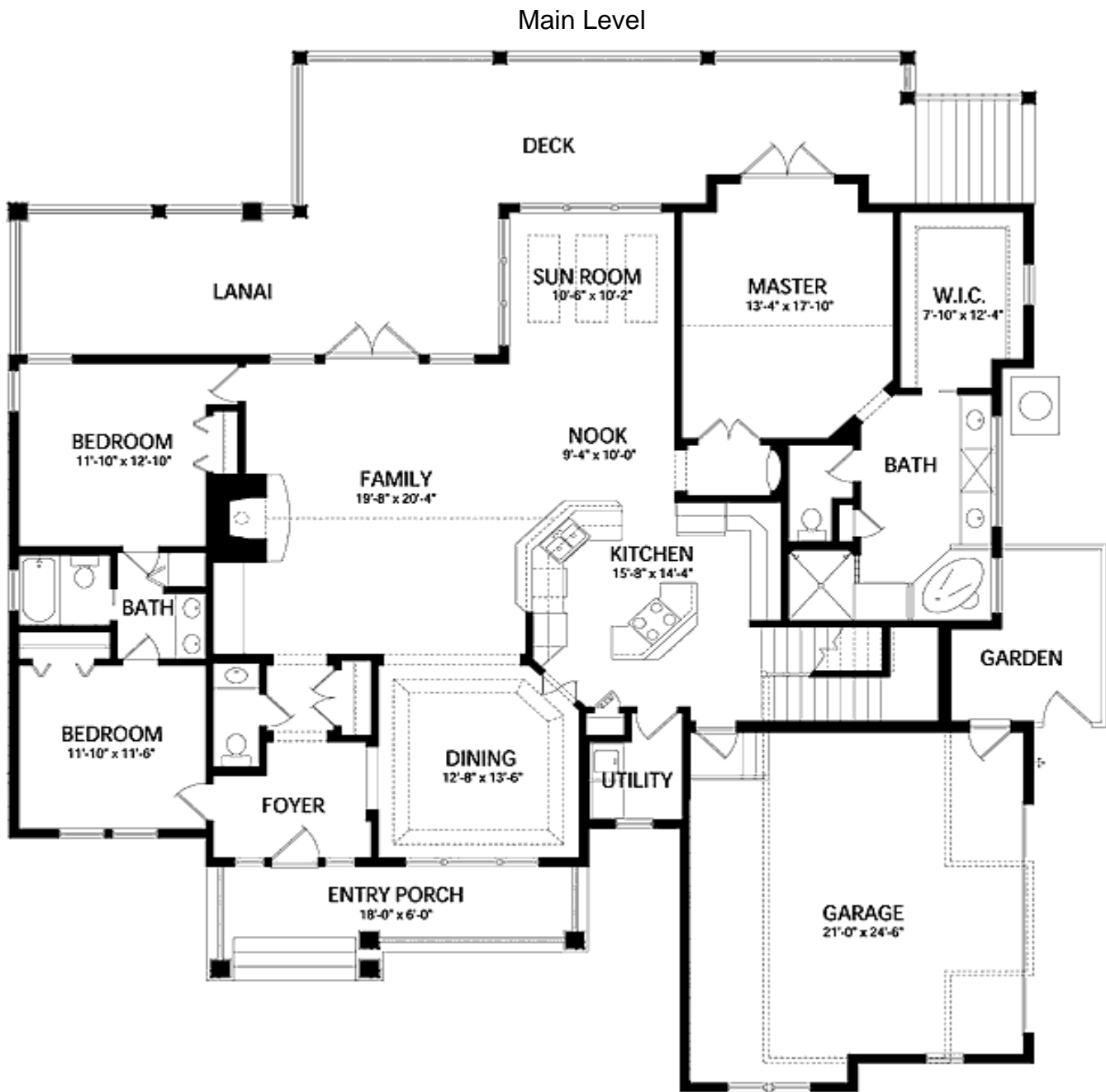
Standard Foundations: Slab

Alternate Foundations: Basement (\$675), Crawl (\$675)

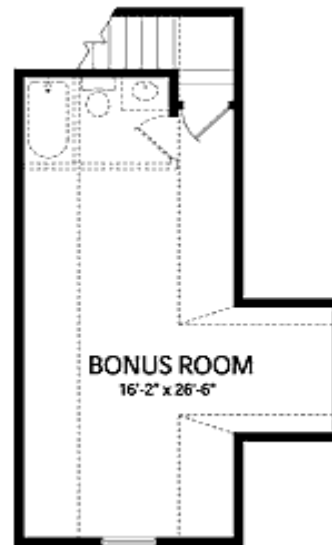
Special Features: Bonus Room, PDF, CAD Available, 1st Floor Master Suite, Corner Lot

One Set	Five Sets	Eight Sets	Reproducible	PDF File	CAD
\$560	\$600	\$650	\$750	\$750	\$1,500

Architectural Designs ...selling quality house plans for over 30 years.



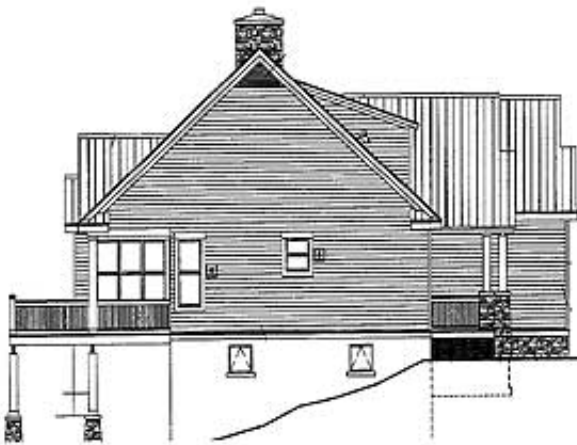
2nd Level



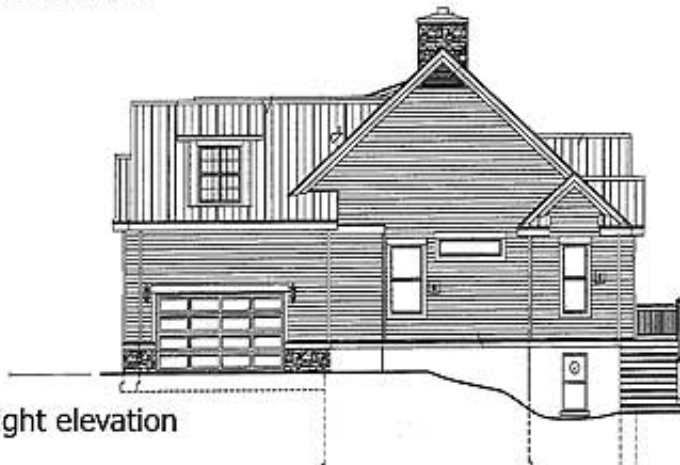
Sides/Rear



Rear elevation



Left elevation



Right elevation