

Architectural Designs ...selling quality house plans for over 30 years.

Plan W21117DR: See-Through Fireplace



House plans are Copyright © 2009 by our architects and designers.

- A charmingly detailed porch wraps around two sides of this country home plan, and in back another porch is found off the kitchen.
- The living and dining rooms are separated by a free-standing see-through fireplace that warms both spaces. There is a curved snack bar in the roomy kitchen.
- A powder room and a home office or additional bedroom complete the first floor.
- Upstairs, the spacious master suite includes a walk-in closet and a bathroom with a spa tub. Two family bedrooms share a hall bath. A laundry room is conveniently placed off the hall.
- Over the side-entry garage, bonus space awaits conversion.
- Ceilings: 9' first floor; 8' second floor.
- Foundation: basement; other foundations available for an additional fee.

Style: Canadian, Country, Farmhouse, Metric

Total Living Area: 2008

Main Flr.: 1080

2nd Flr.: 928

Basement Unfinished: 1,080 sq. ft.

Bonus: 249 sq. ft.

Front Porch: 457 sq. ft.

Total Square Feet: 4,262 sq. ft.

Attached Garage: 2 Car, 468 sq. ft.

Bedrooms: 3

Full Bathrooms: 2

Half Bathrooms: 1

Width: 40'8"

Depth: 51'

Maximum Ridge Height: 32'2"

Exterior Walls: 2x6

Ceiling Height:

 Main Floor: 9'

 2nd Floor: 8'

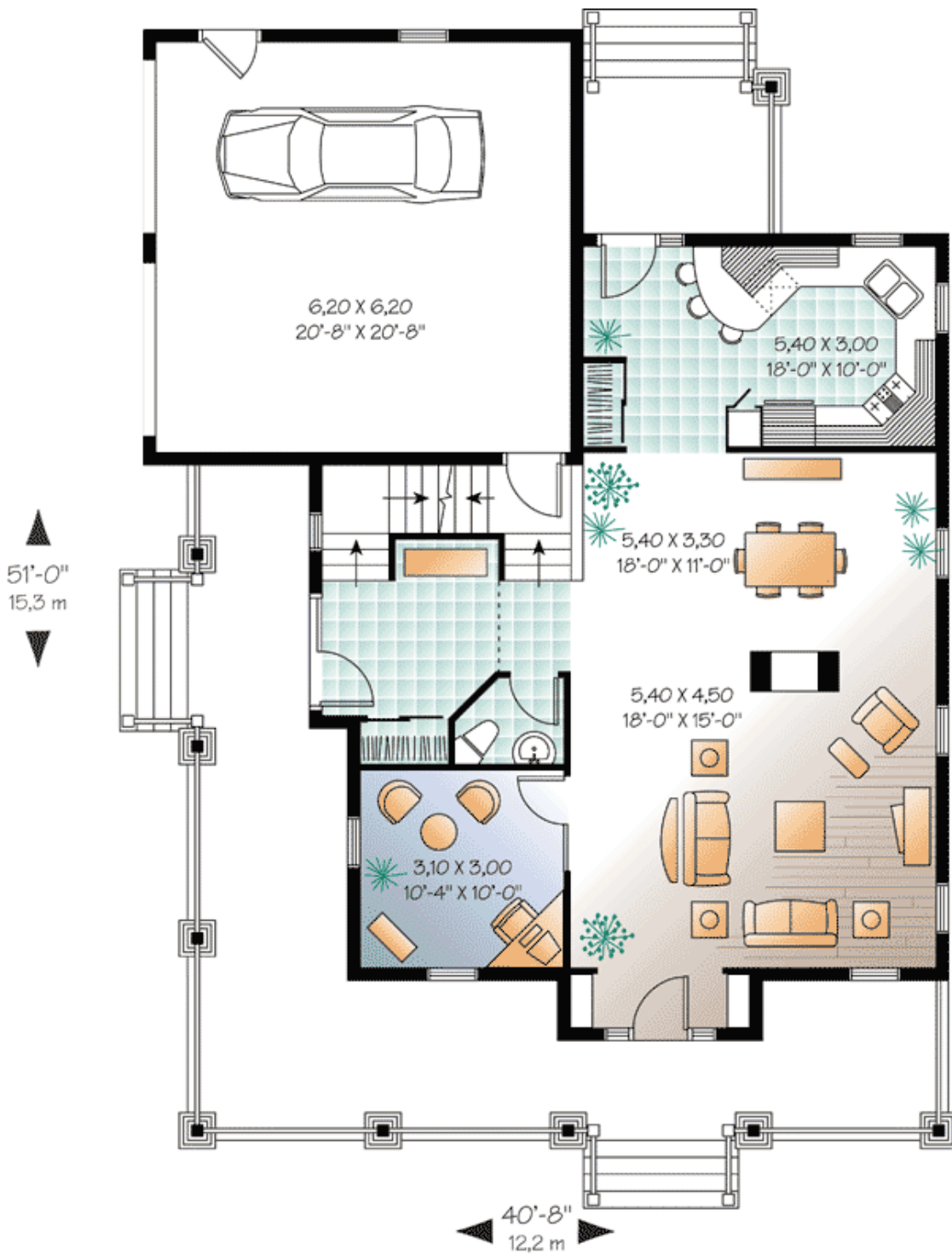
Standard Foundations: Basement

Alternate Foundations: Slab (\$295), Crawl (\$295)

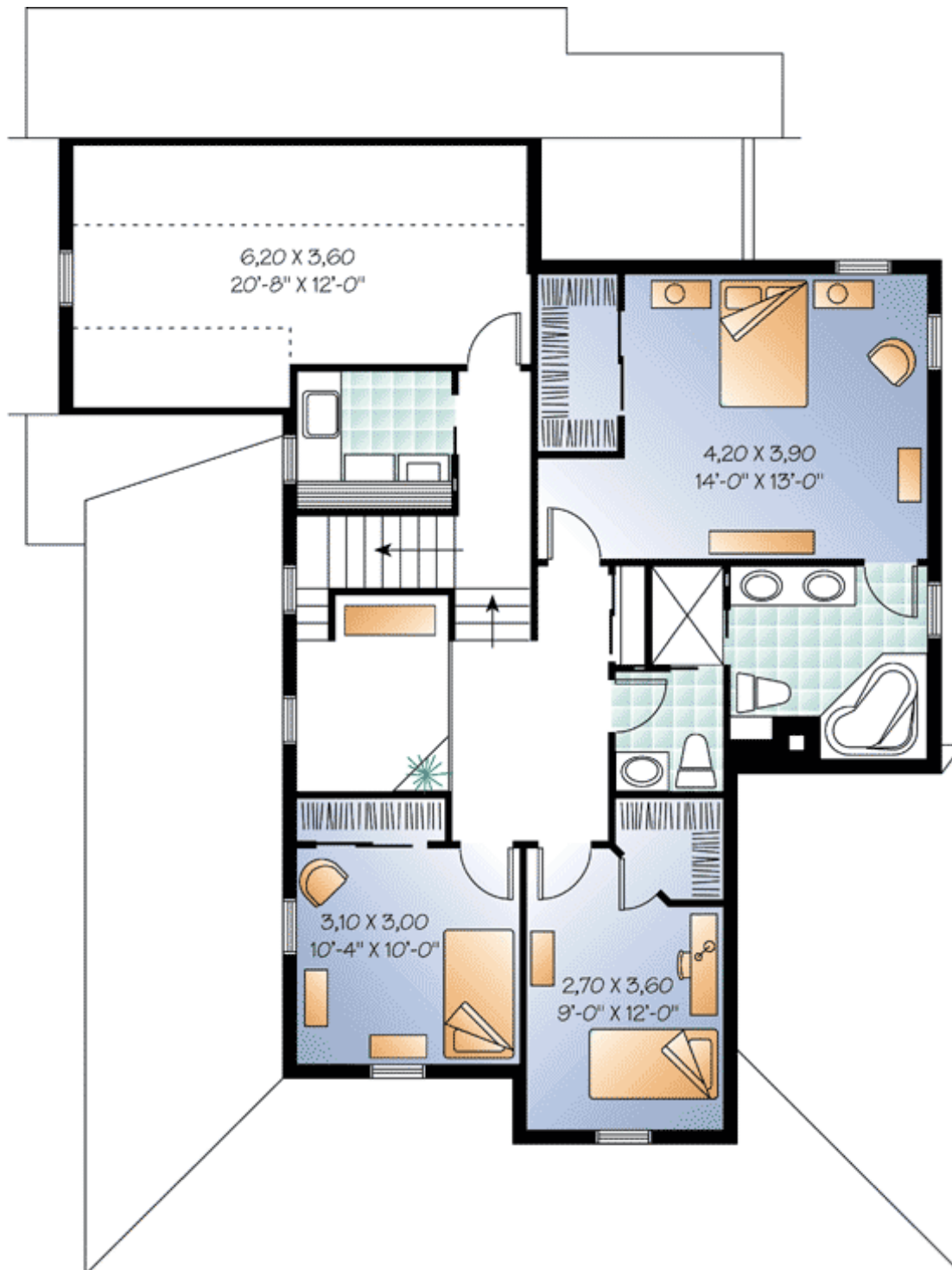
Special Features: Bonus Room, CAD Available, PDF, Narrow Lot, Corner Lot, Den-Office-Library-Study, Wrap Around Porch

One Set	Five Sets	Eight Sets	Reproducible	PDF File	CAD
\$649	\$689	\$719	\$949	\$949	\$1,600

Main Level



2nd Level



Rear View

