

Architectural Designs ...selling quality house plans for over 30 years.

Plan W15007NC: Classic Low Country Home Plan



House plans are Copyright © 2009 by our architects and designers.

- This classic low country home plan is a pleasure to behold. With its raised covered porch accessed by its twin-access stairs, it has great curb appeal.
- Off the foyer, you'll find a powder room and a small office space great for organizing the bills. Laundry is tucked away just beyond.
- The living/dining room is open to the kitchen. A fireplace is flanked by built-ins and a door leads to the rear porch.
- The master suite is located on the main level. French doors lead to a screened porch.
- Upstairs, two bedrooms share a bath. A sitting area is a great place to do homework or read a book.
- There is storage upstairs and on the lower garage level.

Style: Country, Low Country, Southern

Total Living Area: 2230

Main Flr.: 1525

2nd Flr.: 705

Front Porch: 305 sq. ft.

Rear Porch: 487 sq. ft.

Covered Patio: 792 sq. ft.

Total Square Feet: 5,339 sq. ft.

Attached Garage: 2 Car, 1,525 sq. ft.

Bedrooms: 3

Full Bathrooms: 2

Half Bathrooms: 1

Width: 44'

Depth: 52'8"

Maximum Ridge Height: 37'

Exterior Walls: 2x6

Ceiling Height:

Main Floor: 9'

2nd Floor: 10'

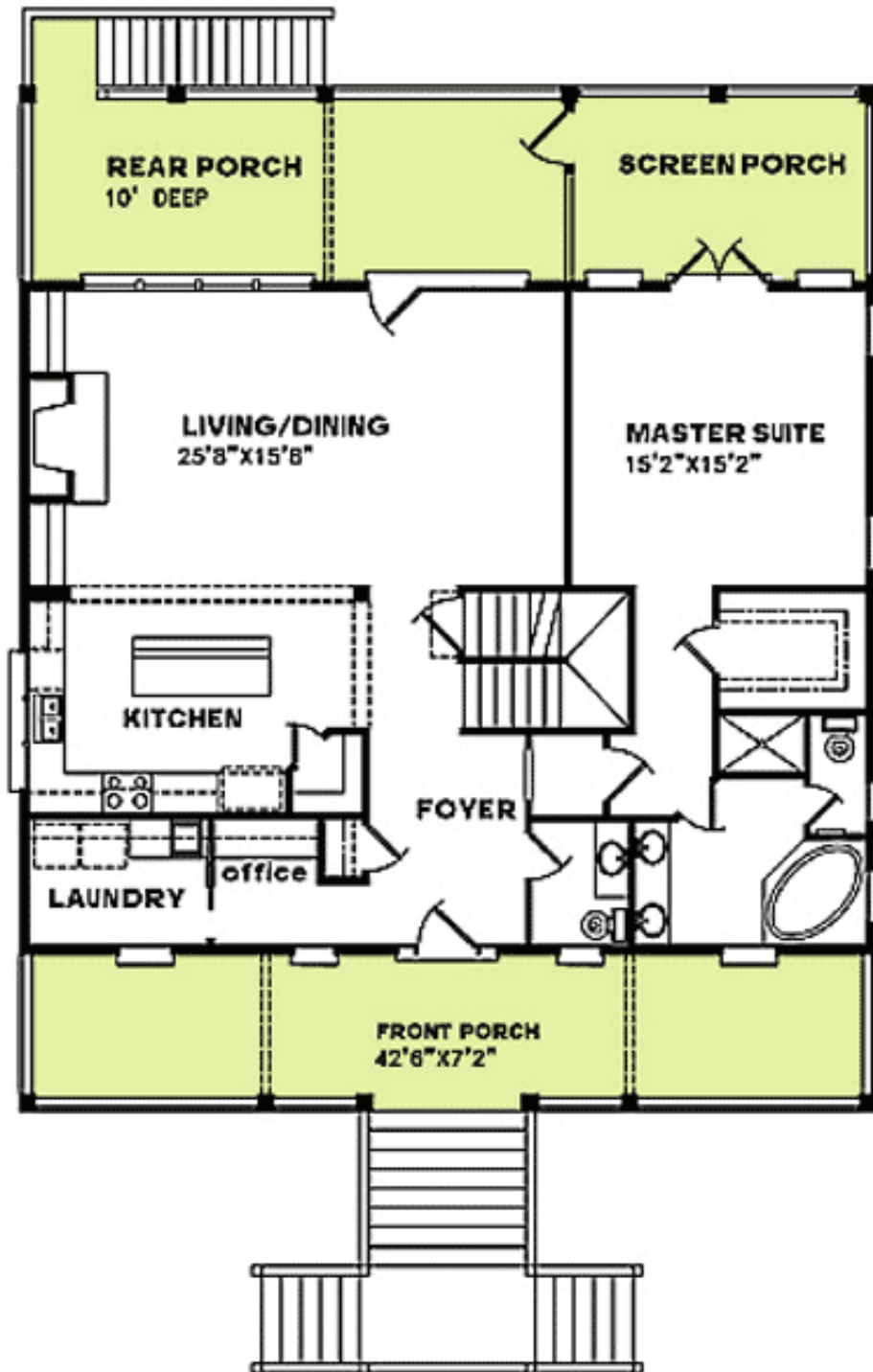
Other: 10' MBR; 9' Lower Level

Standard Foundations: Raise Island, Slab

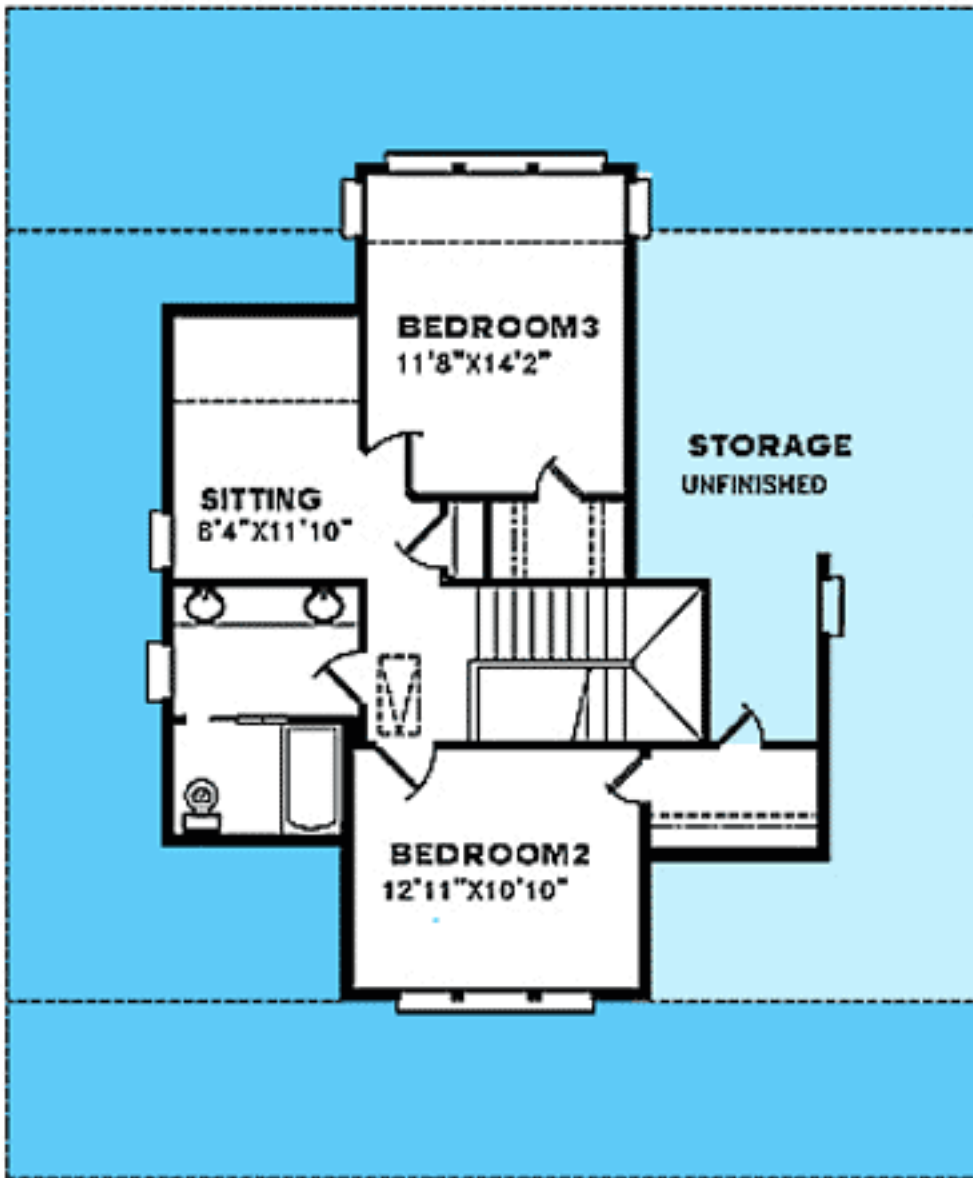
Special Features: Narrow Lot, 1st Floor Master Suite, Drive Under Garage, PDF, CAD Available, MBR Sitting Area

Five Sets	Eight Sets	Reproducible	PDF File	CAD
\$825	\$950	\$1,350	\$1,295	\$1,850

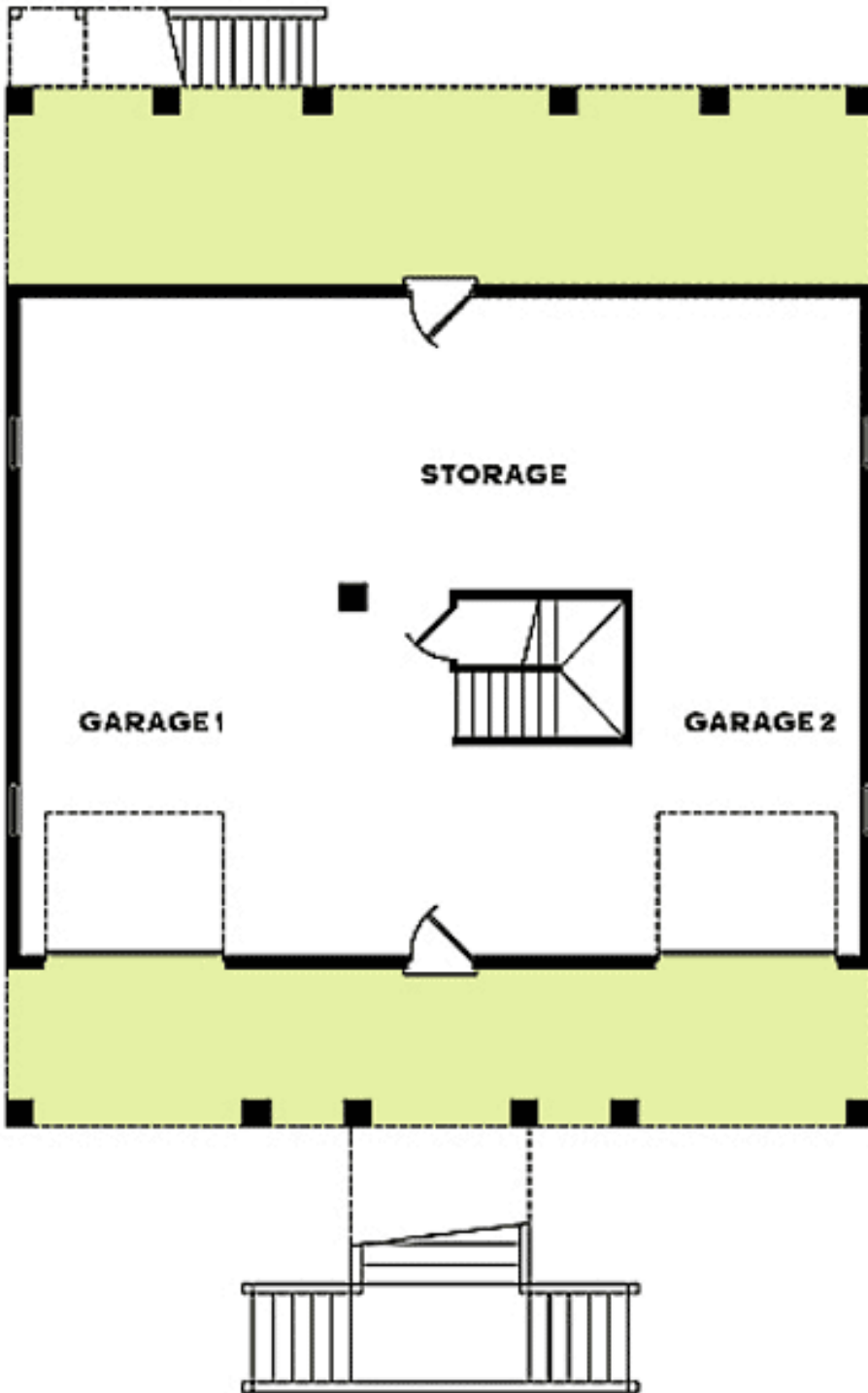
Main Level



2nd Level



Lower Level



Sides/Rear

