

Plan W35292GH: Vacation Retreat



House plans are Copyright © 2009 by our architects and designers.

- A rustic exterior creates the ambiance for this vacation home plan that is designed for a sloping lot with rear views.
- Compact in size, there is still room for a quiet den. A large deck off the spacious great room beckons you to enjoy the outdoors.
- An open floor plan makes the home seem even larger.
- All the bedrooms are on the lower level, along with a rec room that leads to a covered patio.

Style: Metric, Mountain, Northwest, Vacation

Total Living Area: 1730

Main Flr.: 865

Lower Level: 865

Total Square Feet: 1,730 sq. ft.

Bedrooms: 2

Full Bathrooms: 1

Half Bathrooms: 1

Width: 33'2"

Depth: 38'

Maximum Ridge Height: 19'10"

Exterior Walls: ICF

Ceiling Height:

Main Floor: 9'-14'

Lower Floor: 9'

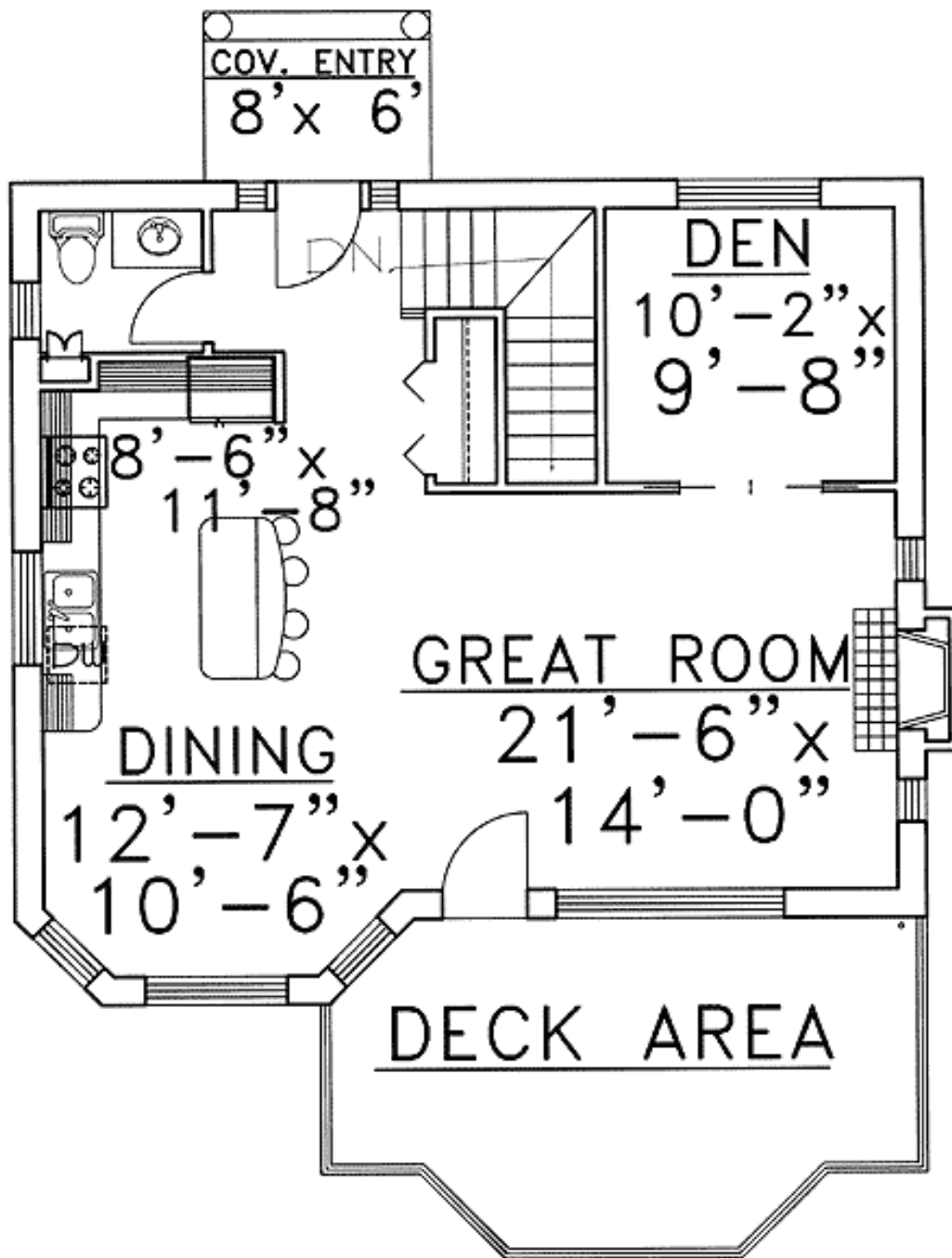
Other: 17'7" Vaulted Living Room

Standard Foundations: Daylight

Special Features: Den-Office-Library-Study, Narrow Lot, 1st Floor Master Suite, Sloping Lot, CAD Available, PDF

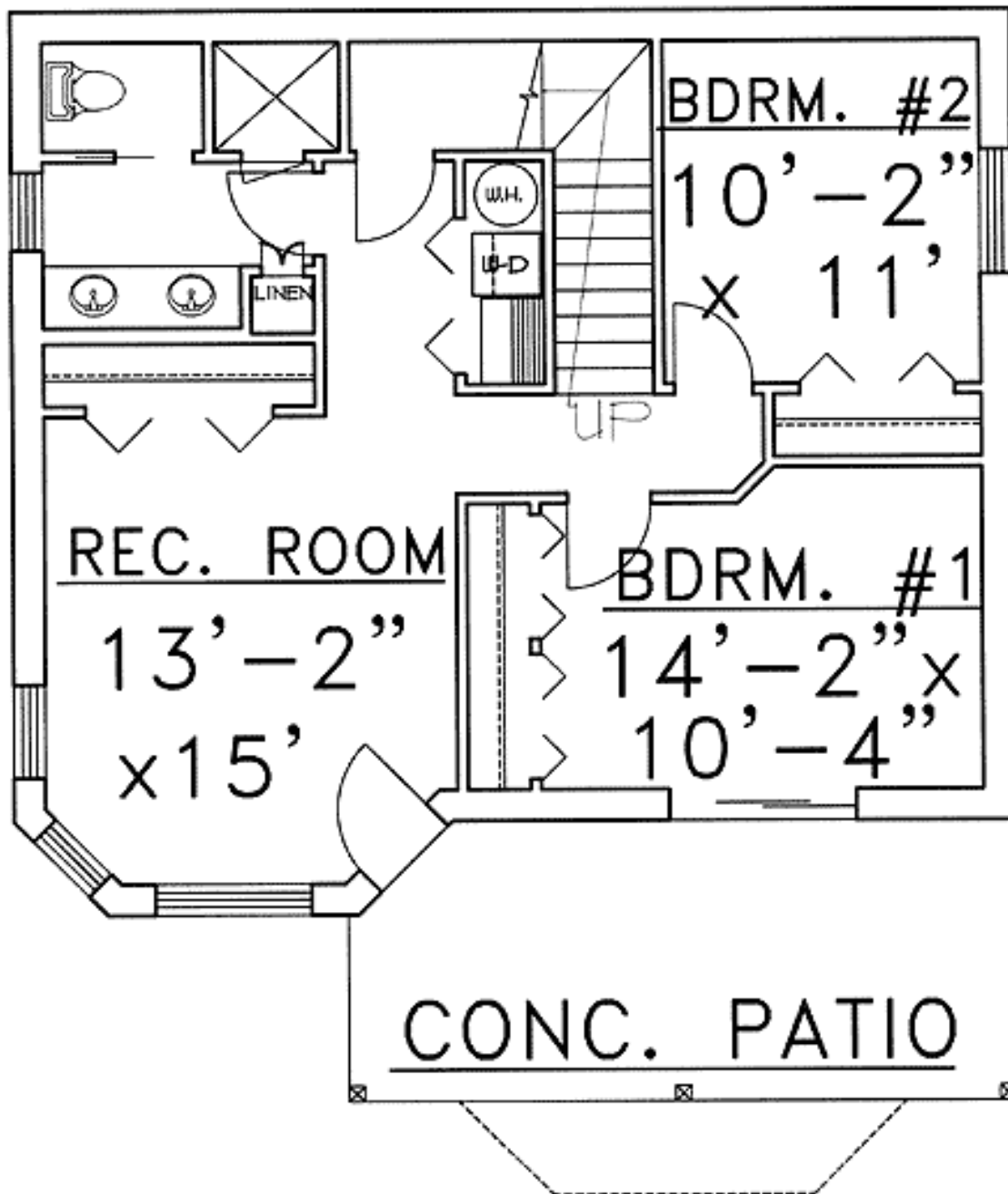
Five Sets	Eight Sets	Reproducible	PDF File	CAD
\$625	\$710	\$650	\$850	\$850

Main Level



MAIN LEVEL FLOOR PLAN

Lower Level



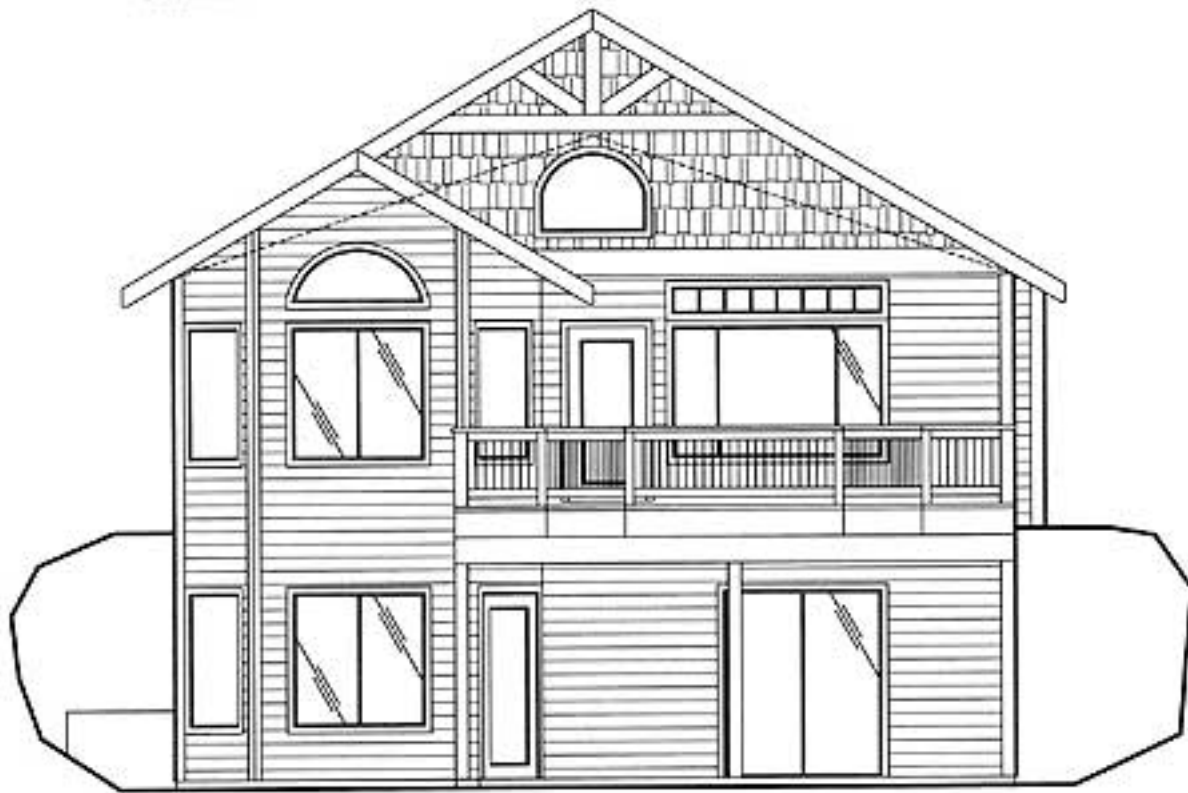
BASEMENT LEVEL FLOOR PLAN

Elevation #2



FRONT ELEVATION

Rear View



REAR ELEVATION