

Architectural Designs ...selling quality house plans for over 30 years.

Plan W88330SH: One Bedroom Suite



House plans are Copyright © 2009 by our architects and designers.

- This handy two-car garage has charm galore, plus additional space on the second level for guests or in-laws, or to be used as a rental apartment.
- It's a 484 square-foot one-bedroom apartment, with living and dining space, complete kitchen, and full bath.
- The bedroom contains a box-bay window and wall closet.
- A deck off the living room is reached via sliding glass doors.
- The dining room, kitchen and bath all feature windows.
- Access this apartment by a stairway to the left of the double garage.

Style: Canadian, Carriage, Garage

Total Living Area: 484

2nd Flr.: 484

Deck: 44 sq. ft.

Total Square Feet: 1,056 sq. ft.

Attached Garage: 2 Car, 528 sq. ft.

Bedrooms: 1

Full Bathrooms: 1

Width: 24'

Depth: 22'

Maximum Ridge Height: 25'

Exterior Walls: 2x6

Ceiling Height:

Main Floor: 8'

Standard Foundations: Slab

Special Features: PDF

Five Sets
\$220

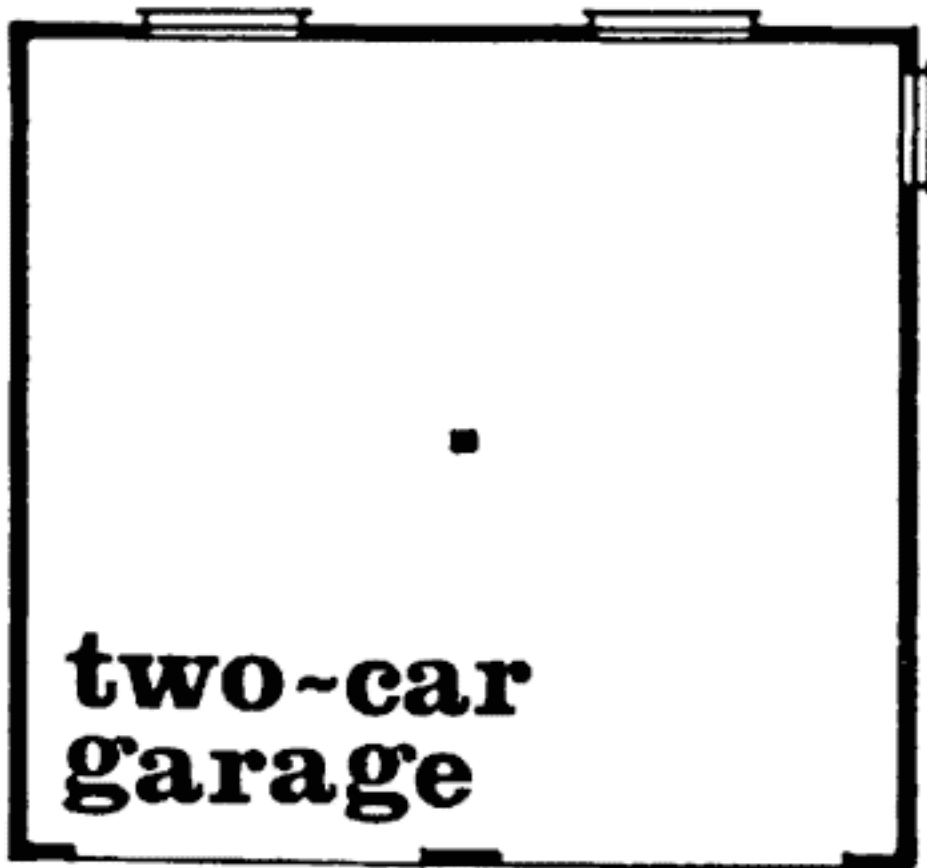
Eight Sets
\$260

Reproducible
\$320

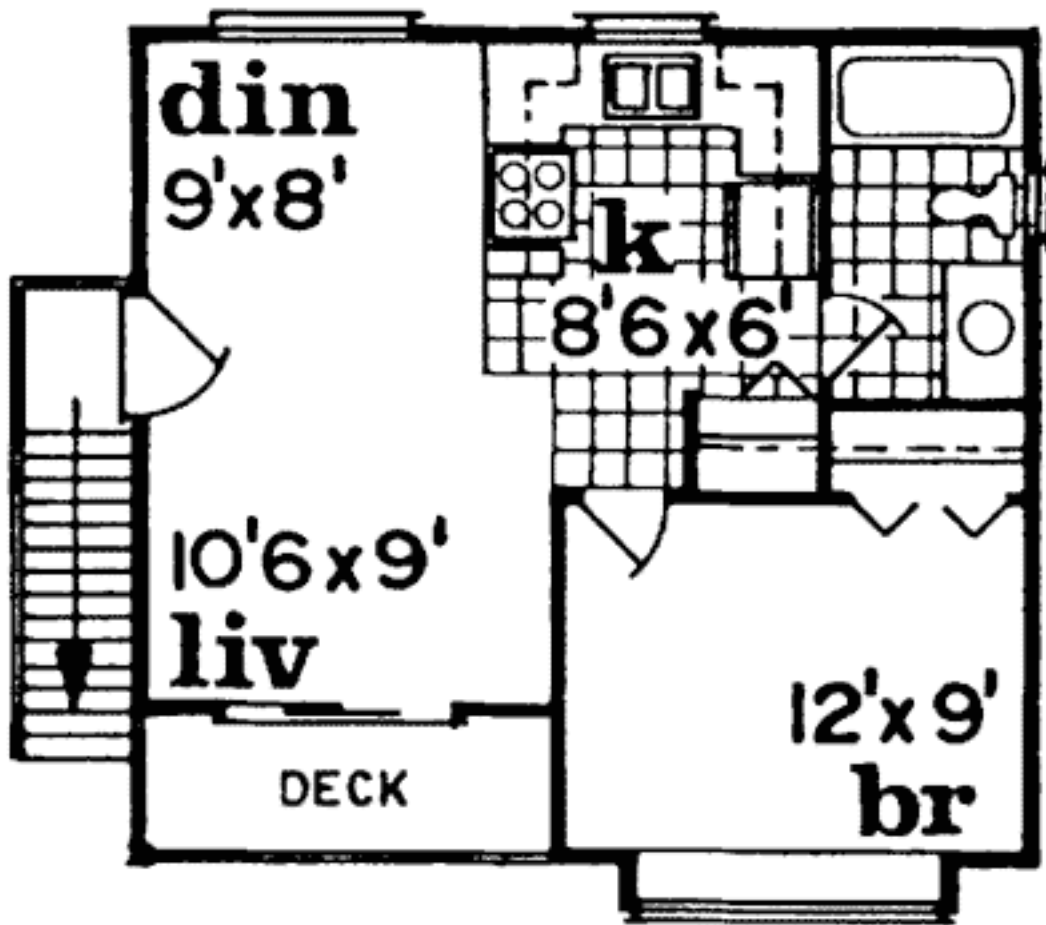
PDF File
\$320

CAD
\$520

Main Level



2nd Level



Rear View

