

Architectural Designs ...selling quality house plans for over 30 years.

Plan W20029GA: Cozy Porch and In-Law Suite



House plans are Copyright © 2009 by our architects and designers.

- A cozy front porch provides an appealing entrance into this spacious and carefully designed two story home plan with 5 bedrooms and 3 baths. This plan includes a significant in-law suite on the main level to meet the needs for the growing number of baby boomers.
- You first walk into this open foyer which provides direct access to an elegant dining area and a spacious office for telecommuting. Beyond, you will find a grand two story family room which is open to the kitchen and breakfast area. We have also provided an enormous 3 car garage for today's mobile families. Also, you will find an enormous in-law suite and full bath nestled in the corner.
- Upstairs you will find 3 bedrooms, which includes an exquisite master bedroom. The master features a tray ceiling and a walk-in closet with an expansion area available to virtually triple its size. The master bedroom includes a great upper deck for relaxation and unwinding after a long work day.
- Lower level ceiling heights are 9', except for the family room which is 18'. The upper level ceilings are 8' high except for the vaulted master areas.
- This house plan is on a great basement for extra space for adding bedrooms, entertainment room and exercise room.
- Related Plan: Need a front-entry garage? See house plan 20035GA.

Style: Colonial, Farmhouse, Traditional

Total Living Area: 2234

Main Flr.: 1274

2nd Flr.: 960

Porch, Combined: 172 sq. ft.

Screen Porch:

Total Square Feet: 3,211 sq. ft.

Attached Garage: 3 Car, 671 sq. ft.

Bedrooms: 4

Full Bathrooms: 3

Width: 53'8"

Depth: 56'

Maximum Ridge Height: 29'10"

Exterior Walls: 2x6

Ceiling Height:

 Main Floor: 9'

 2nd Floor: 8'

 Other: 18' Family; 9' MBR

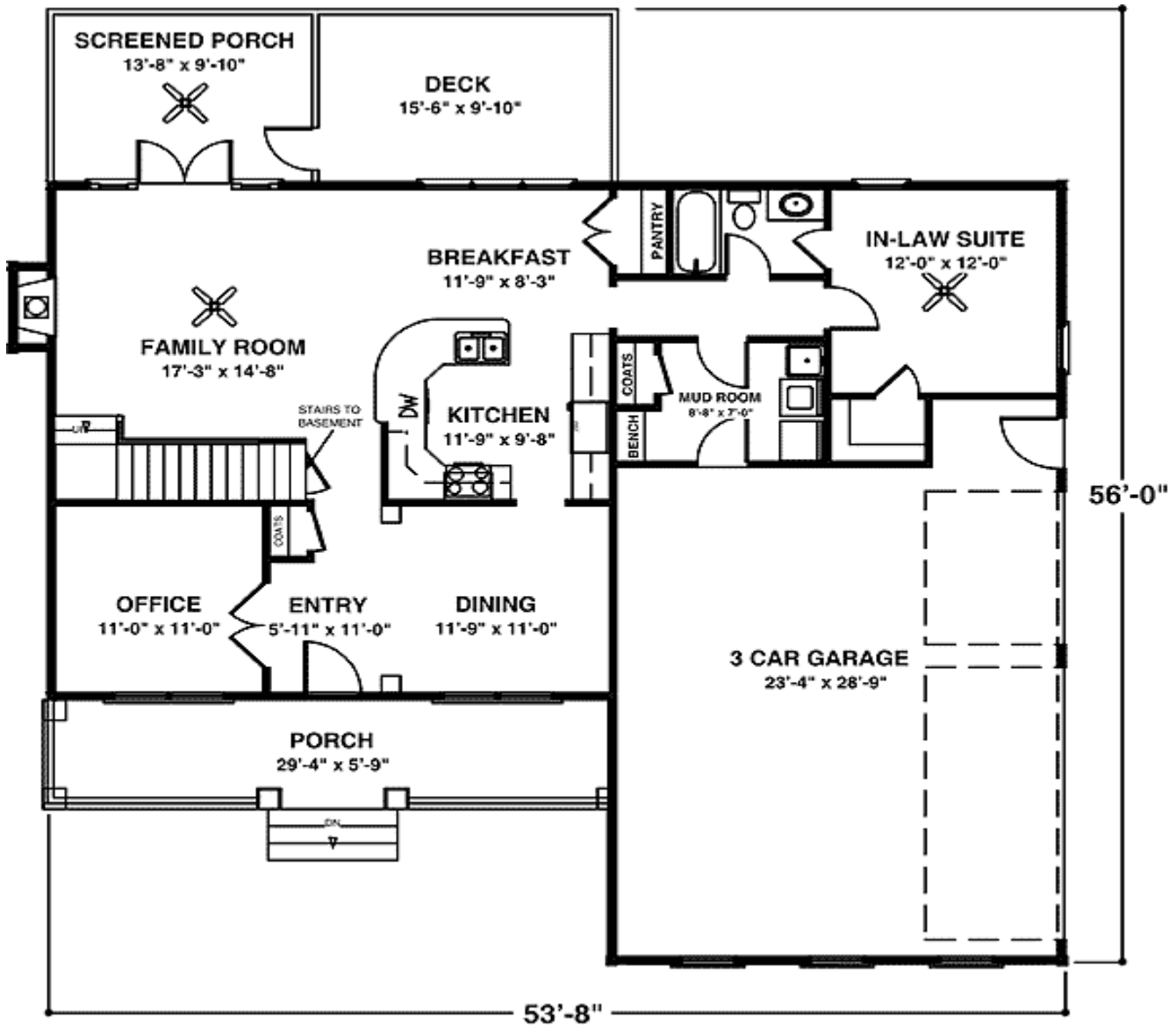
Standard Foundations: Basement

Alternate Foundations: Slab (\$675), Crawl (\$675)

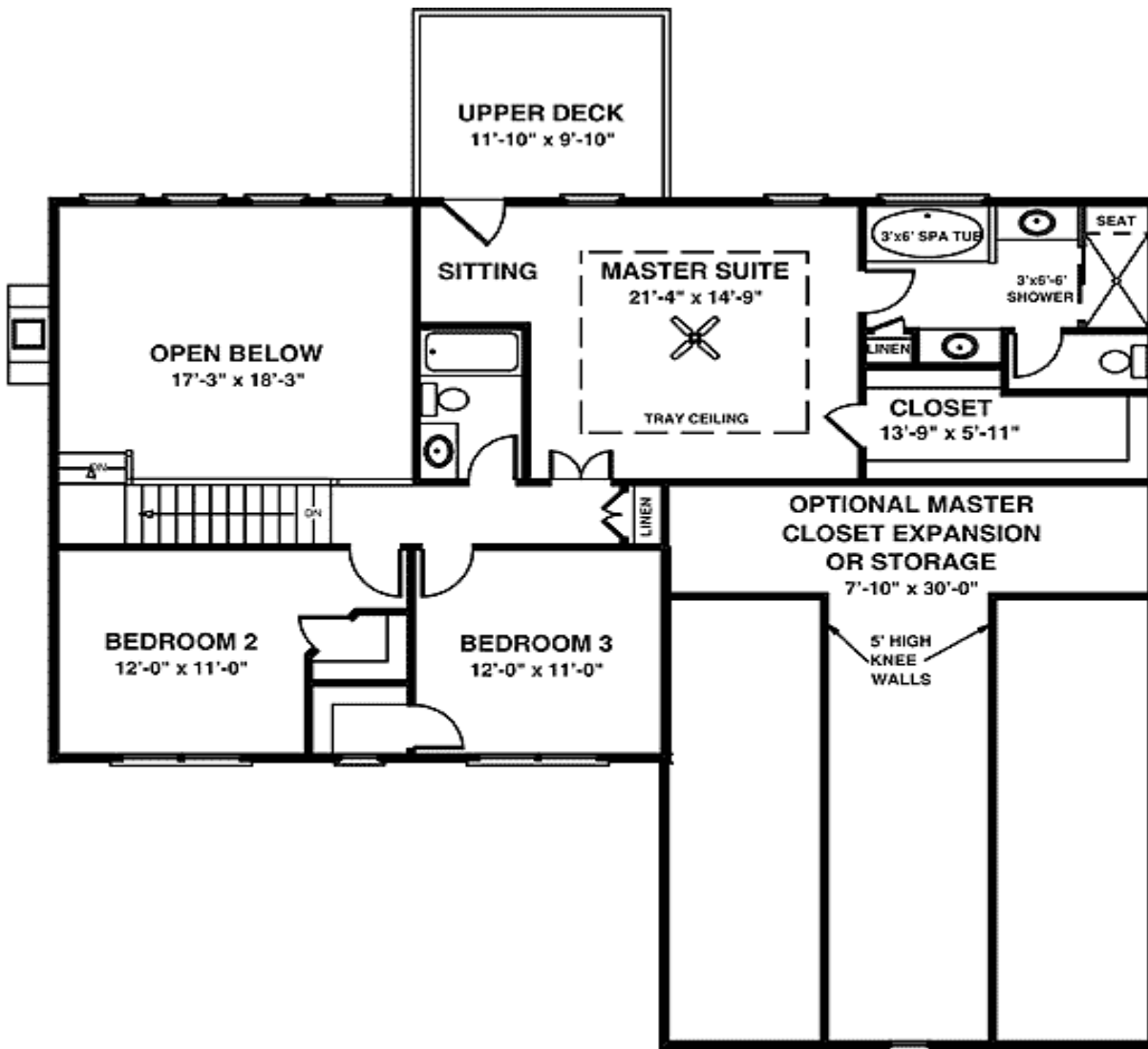
Special Features: In-Law Suite, CAD Available

One Set	Five Sets	Eight Sets	Reproducible	PDF File	CAD
\$560	\$600	\$650	\$750	\$750	\$1,500

Main Level



2nd Level



Rear View



REAR ELEVATION