

Architectural Designs ...selling quality house plans for over 30 years.

Plan W4657PR: New England Charm



House plans are Copyright © 2009 by our architects and designers.

- With its twin dormers and multipaned double-hung windows, this classic Cape Cod design offers the homeowner plenty of New England charm.
- In the living room, built-in bookshelves flank the cozy fireplace. On the other side of the entry, a good-sized den provides privacy for work, study, music or television viewing.
- The living room flows back into the dining room, which opens to a covered porch. A peninsula eating bar divides the dining room from the airy kitchen with its convenient access to the pantry, powder room, utility room and garage.
- Upstairs, the master suite contains a compartmented bath with four fixtures, a walk-in closet and a linen closet. A hall bath, also with compartments, serves the other bedrooms. Storage space over the garage can be reached from both these bedrooms.
- Foundation: basement.

Style: Cape Cod, Country

Total Living Area: 1835

Main Flr.: 980

2nd Flr.: 855

Basement Unfinished: 980 sq. ft.

Front Porch: 180 sq. ft.

Total Square Feet: 3,525 sq. ft.

Attached Garage: 2 Car, 530 sq. ft.

Bedrooms: 3

Full Bathrooms: 2

Half Bathrooms: 1

Width: 56'4"

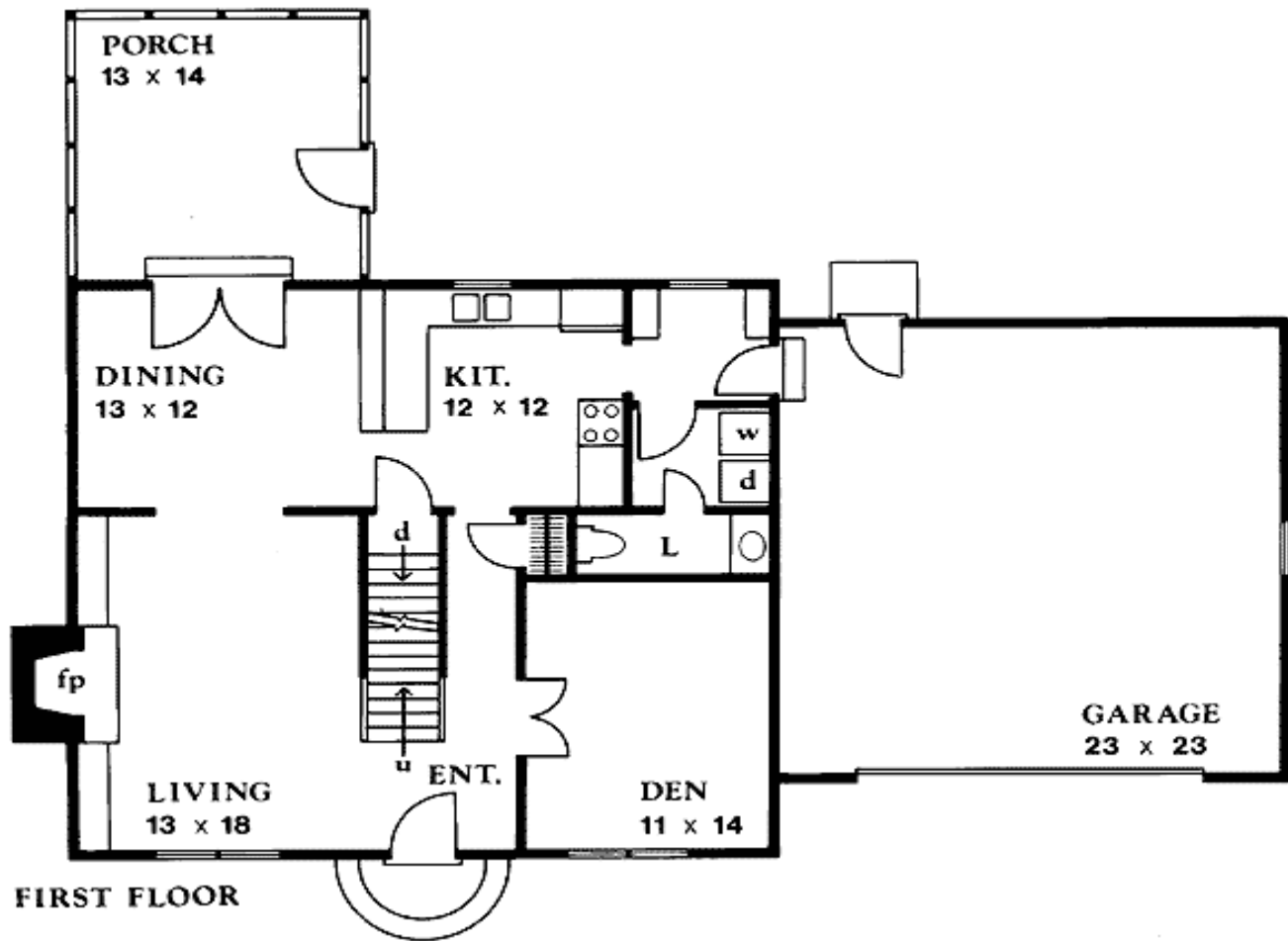
Depth: 44'

Maximum Ridge Height: 25'

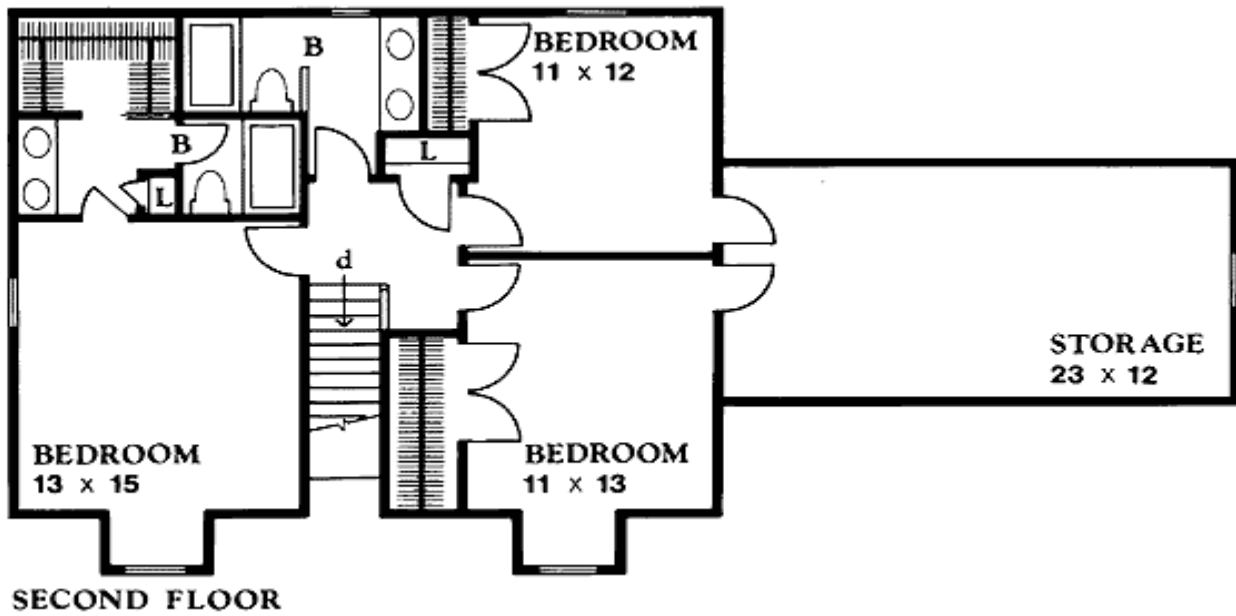
Exterior Walls: 2x4
Ceiling Height:
Standard Foundations: Basement

One Set	Five Sets	Eight Sets	Reproducible
\$450	\$505	\$550	\$670

Main Level



2nd Level



Rear View

