

Plan W23006JD: Bonus Room or 2-Story Great Room



House plans are Copyright © 2009 by our architects and designers.

- This house plan comes with a 2-story great room. Or choose not to build it that way and gain a bonus room above.
- The great room is open to the dining room and kitchen. A long counter in the kitchen creates informal seating.
- A den with closet creates a secluded retreat. A powder room and laundry complete the main floor.
- Great windows add light to the stairs leading to the bedrooms on the second floor. The master bedroom features a walk-in closet. Two bedrooms share a bath and there is a flexible vaulted bonus room. A loft area rounds out the upstairs.
- Related Plan: Don't need the bonus room? See house plan 23000JD.
- Additional fees apply when building in the State of Washington. Contact us for more information.

Style: Northwest

Total Living Area: 1743

Main Flr.: 783

2nd Flr.: 960

Front Porch: 62 sq. ft.

Total Square Feet: 2,205 sq. ft.

Attached Garage: 2 Car, 400 sq. ft.

Bedrooms: 3

Full Bathrooms: 2

Half Bathrooms: 1

Width: 35'

Depth: 45'

Maximum Ridge Height: 23'8"

Exterior Walls: 2x6

Ceiling Height:

Main Floor: 8'1"

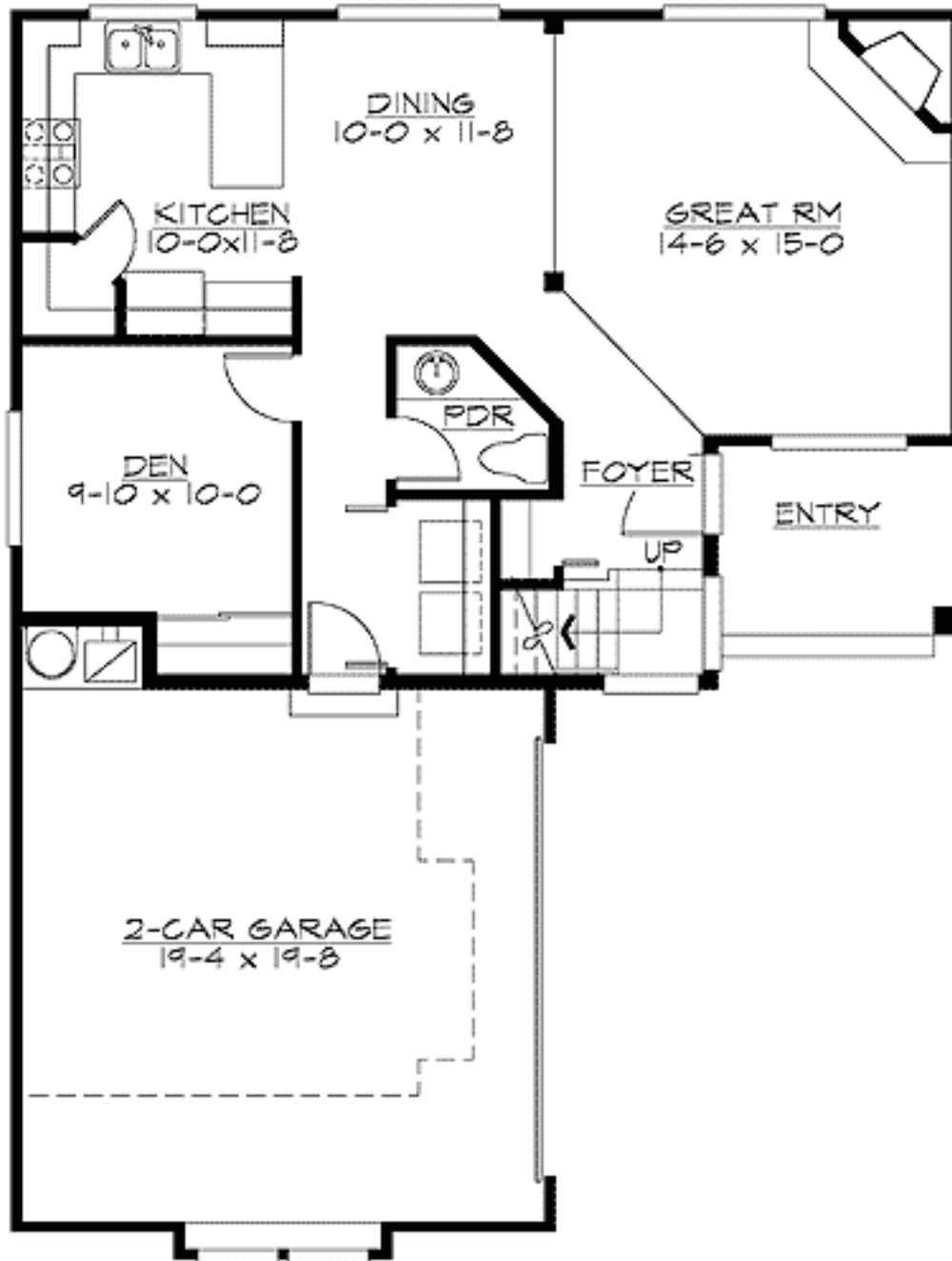
2nd Floor: 8'1"

Standard Foundations: Crawl

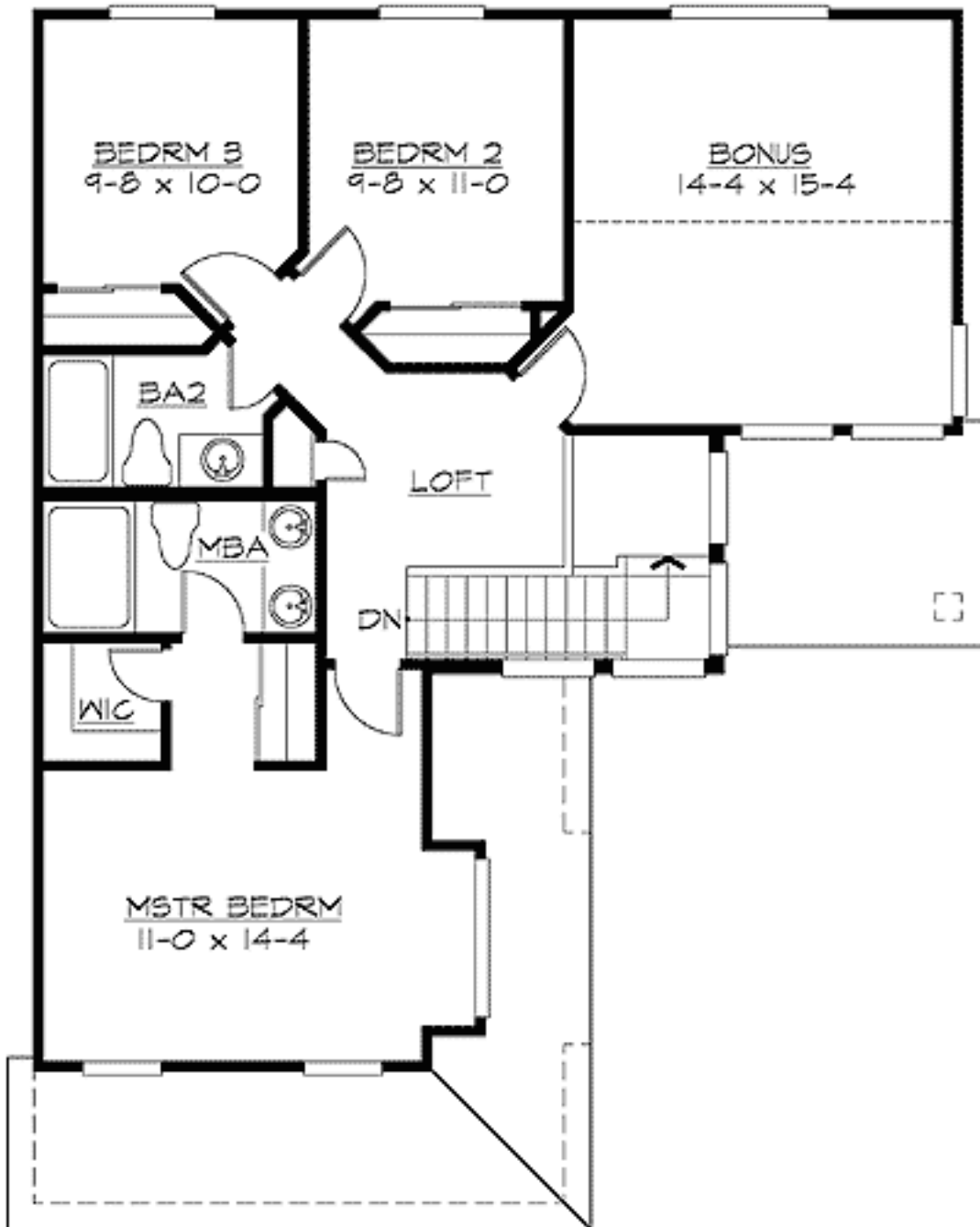
Special Features: Narrow Lot, CAD Available, PDF

One Set	Five Sets	Eight Sets	Reproducible	PDF File	CAD
\$595	\$650	\$695	\$895	\$895	\$1,395

Main Level



2nd Level



Rear View

