

Architectural Designs ...selling quality house plans for over 30 years.

Plan W6519RF: Timeless Country Victorian



House plans are Copyright © 2009 by our architects and designers.

- Combining elements of country and Victorian styles, this timeless design radiates appeal. Covered porches in both front and back extend the living space.
- Inside, the wide foyer leads to the wonderful great room and open family living area.
- Nine-foot ceilings prevail on the first floor, except for a 12-foot tray ceiling in the master bedroom. The deluxe master bath includes a corner spa tub and a walk-in closet. To the left of the foyer lies a flexible room that, depending on placement of the door, could be a home office or a study.
- A corner fireplace spotlights the great room, which includes a bayed eating nook. From the open kitchen, French doors open to a formal dining room.
- Upstairs, the cleverly compartmented bath serves two bedrooms. The second floor also contains a wonderful vaulted sitting area and recreation room enhanced by a large circle top window. One bedroom is also vaulted.
- Note the shop/storage area in the garage.
- Foundation options: basement, slab or crawl space. Specify when ordering.
- For a reversed version of this house plan with a three-car garage, see 6535RF.

Style: Country, Farmhouse

Total Living Area: 2327

Main Flr.: 1484

2nd Flr.: 843

Basement Unfinished: 1,484 sq. ft.

Front Porch: 340 sq. ft.

Rear Porch: 180 sq. ft.

Porch, Combined: 520 sq. ft.

Total Square Feet: 5,503 sq. ft.

Attached Garage: 2 Car, 652 sq. ft.

Bedrooms: 4

Full Bathrooms: 2

Half Bathrooms: 1
Width: 68'10"
Depth: 51'2"
Maximum Ridge Height: 30'
Exterior Walls: 2x4

Ceiling Height:

Main Floor: 9'

2nd Floor: 8'

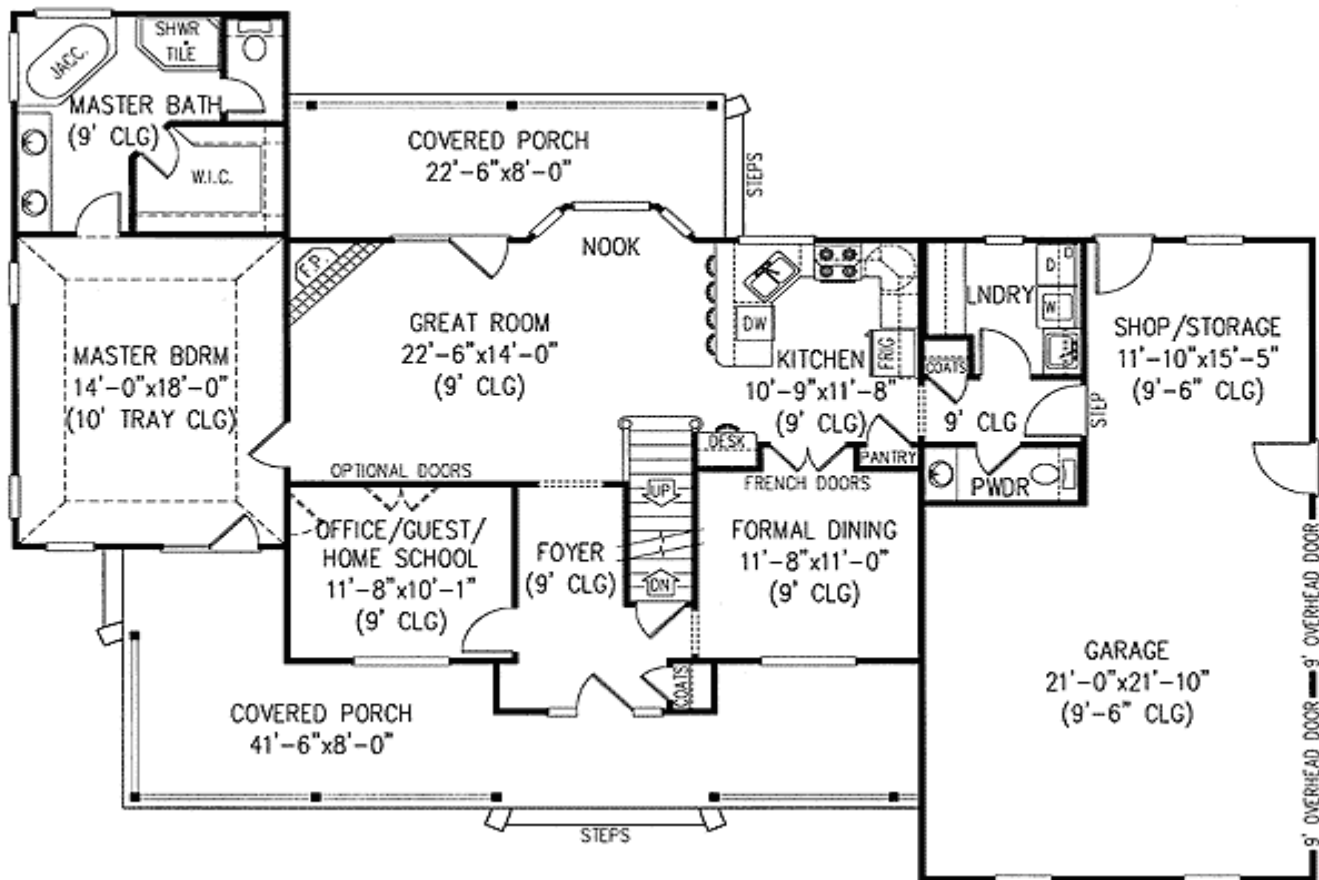
Other: 10' 10' Tray MBR; 8' Basement; Vaulted Game Room & BR#3

Standard Foundations: Slab, Basement, Crawl

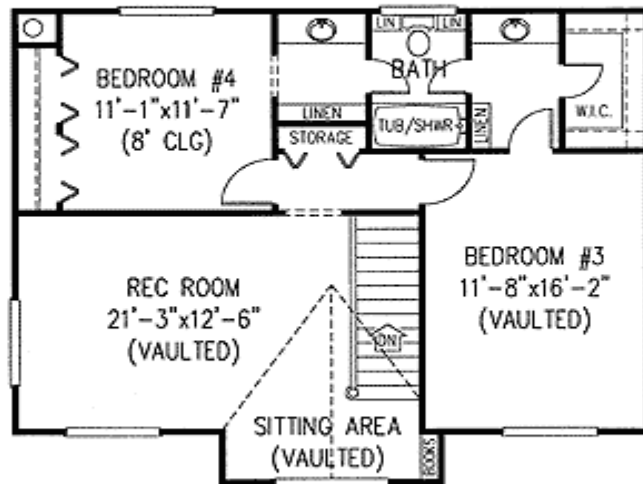
Special Features: Photo Gallery, Media-Game-Home Theater, 1st Floor Master Suite, Den-Office-Library-Study, CAD Available, Jack & Jill Bath

One Set	Five Sets	Eight Sets	Reproducible	CAD
\$665	\$725	\$765	\$915	\$1,315

Main Level



2nd Level



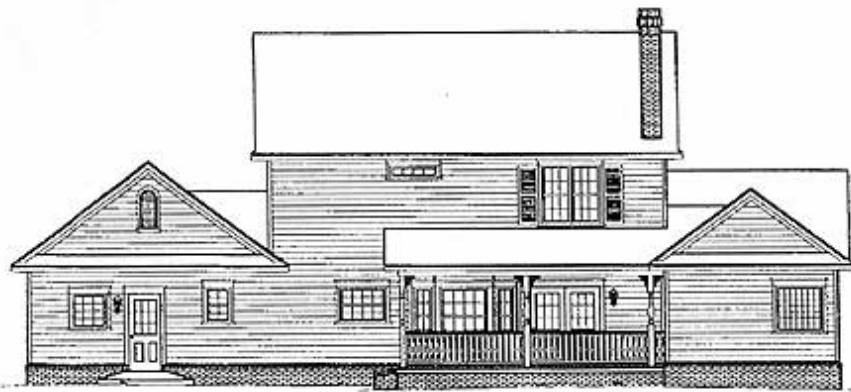
Photo



Elevation #2



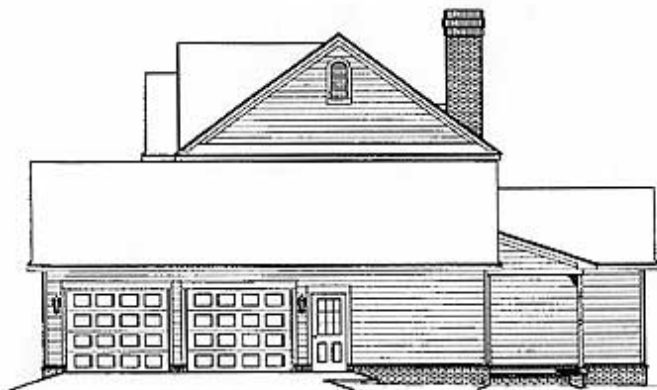
Sides/Rear



REAR ELEVATION



LEFT ELEVATION



RIGHT ELEVATION