

Architectural Designs ...selling quality house plans for over 30 years.

Plan W4793PR: Quintessential Cape Cod



House plans are Copyright © 2009 by our architects and designers.

- Steeply pitched roofs, multi-paned, double-hung windows, and a massive brick chimney centered on the main portion of this Cape Cod-style house plan add New England charm.
- The interior of this house plan revolves around the central flue. Paired doors in the entry way open to a formal living room that is graced with a fireplace.
- In the dining room/family room, two sets of French doors provide access to the brick terrace, while a wood stove provides warmth during the winter.
- To the left lies a U-shaped kitchen equipped with a cooking island and ample cabinet/counter space. It adjoins a breakfast/sunroom which has a door that opens to the back yard. The mudroom has a washer/dryer alcove, half-bath, and coat closet.
- The first floor master suite has a full bath, large walk-in closet, and French doors leading outside. The second floor bedrooms have walk-in closets and share a full bath with two sinks.

Style: Cape Cod

Total Living Area: 2045

Main Flr.: 1405

2nd Flr.: 640

Basement Unfinished: 1,405 sq. ft.

Total Square Feet: 3,980 sq. ft.

Attached Garage: 2 Car, 530 sq. ft.

Bedrooms: 3

Full Bathrooms: 2

Half Bathrooms: 1

Width: 70'

Depth: 66'6"

Maximum Ridge Height: 24'

Exterior Walls: 2x4

Ceiling Height:

Main Floor: 8'

2nd Floor: 7'6"

Standard Foundations: Basement

Special Features: Corner Lot, 1st Floor Master Suite

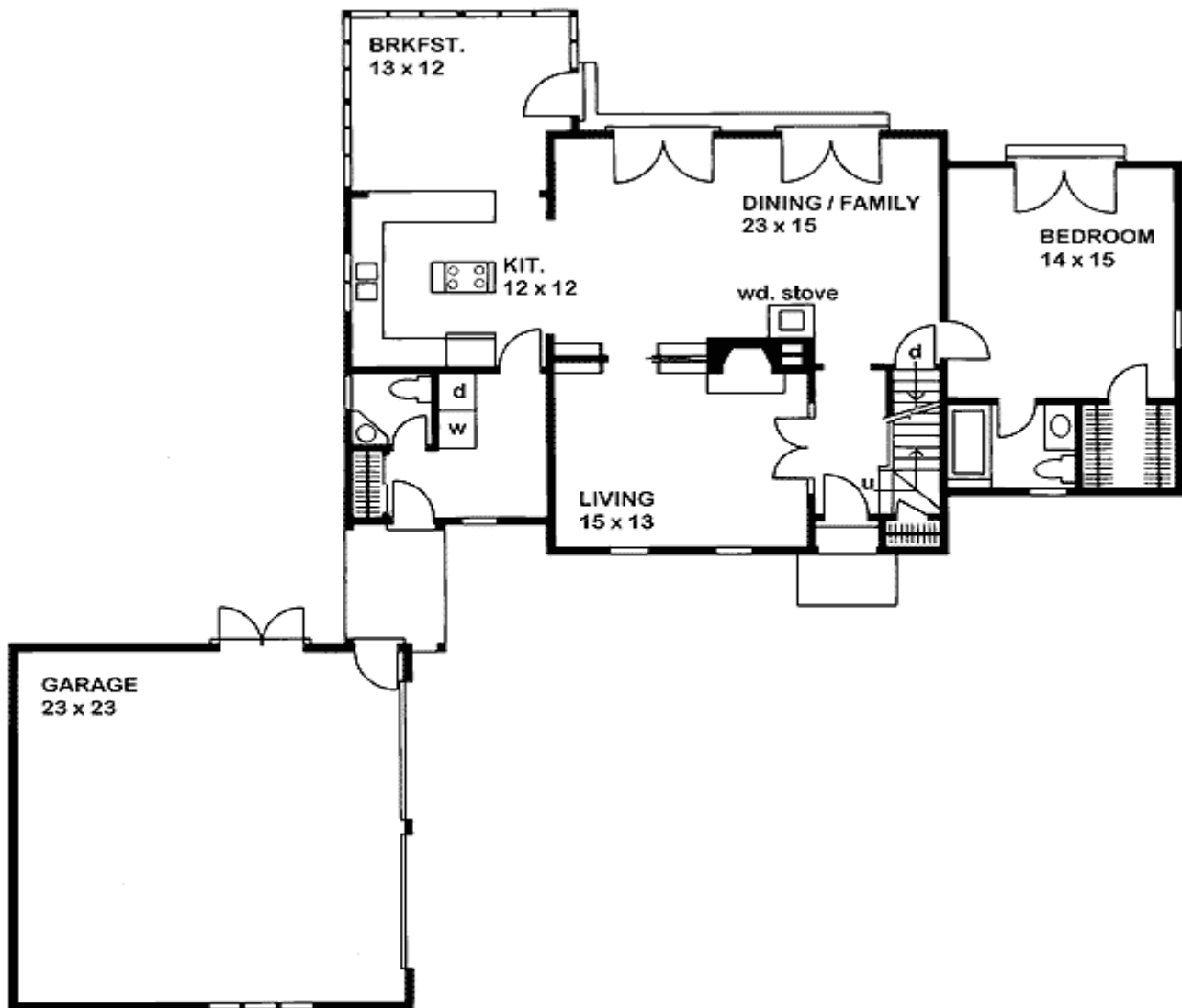
One Set
\$485

Five Sets
\$545

Eight Sets
\$590

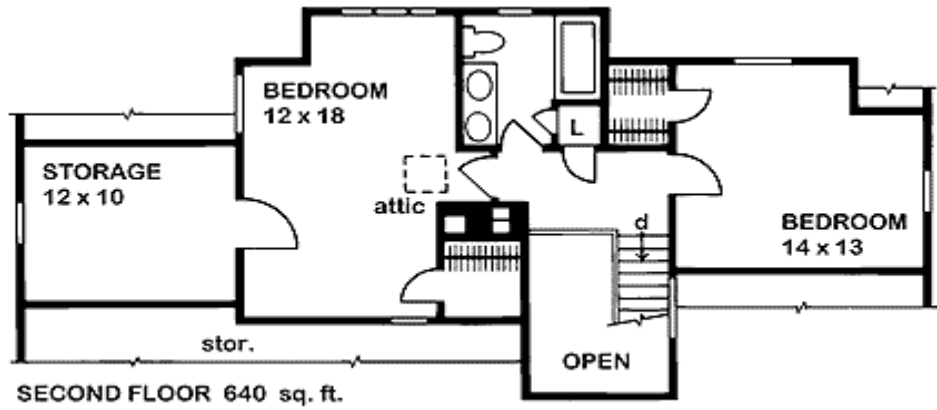
Reproducible
\$710

Main Level



FIRST FLOOR 1405 sq. ft.

2nd Level



Rear View

