

Plan W9807SW: Rustic Retreat



House plans are Copyright © 2009 by our architects and designers.

- The partially covered rear wrap-around deck encourages expanded family activity in an already open floor plan.
- On the main level, the large and open u-shaped kitchen has a raised breakfast bar and is open to the great room that has a huge fireplace. There is also a bedroom and combination bathroom/laundry room.
- The second floor bedrooms share a full bath.
- This daylight basement design contains optional plans for two additional bedrooms, a shared bathroom and multi-purpose recreation room with patio access. The separate private entrance easily transforms this level into a home office or business space.
- Ceilings: 8' first floor; 10' and 12' second floor.
- Related Plans: For an alternate layout, see house plan 9812SW.
- Also see these related house plans: 9801SW, 9805SW, 9808SW and 9810SW.

Style: Canadian, Cottage, Country, Vacation

Total Living Area: 1550

Main Flr.: 864

2nd Flr.: 686

Basement Unfinished: 864 sq. ft.

Porch, Combined: 73 sq. ft.

Deck: 611 sq. ft.

Balcony/Veranda: 93 sq. ft.

Total Square Feet: 3,191 sq. ft.

Bedrooms: 5

Full Bathrooms: 2

Half Bathrooms: 1

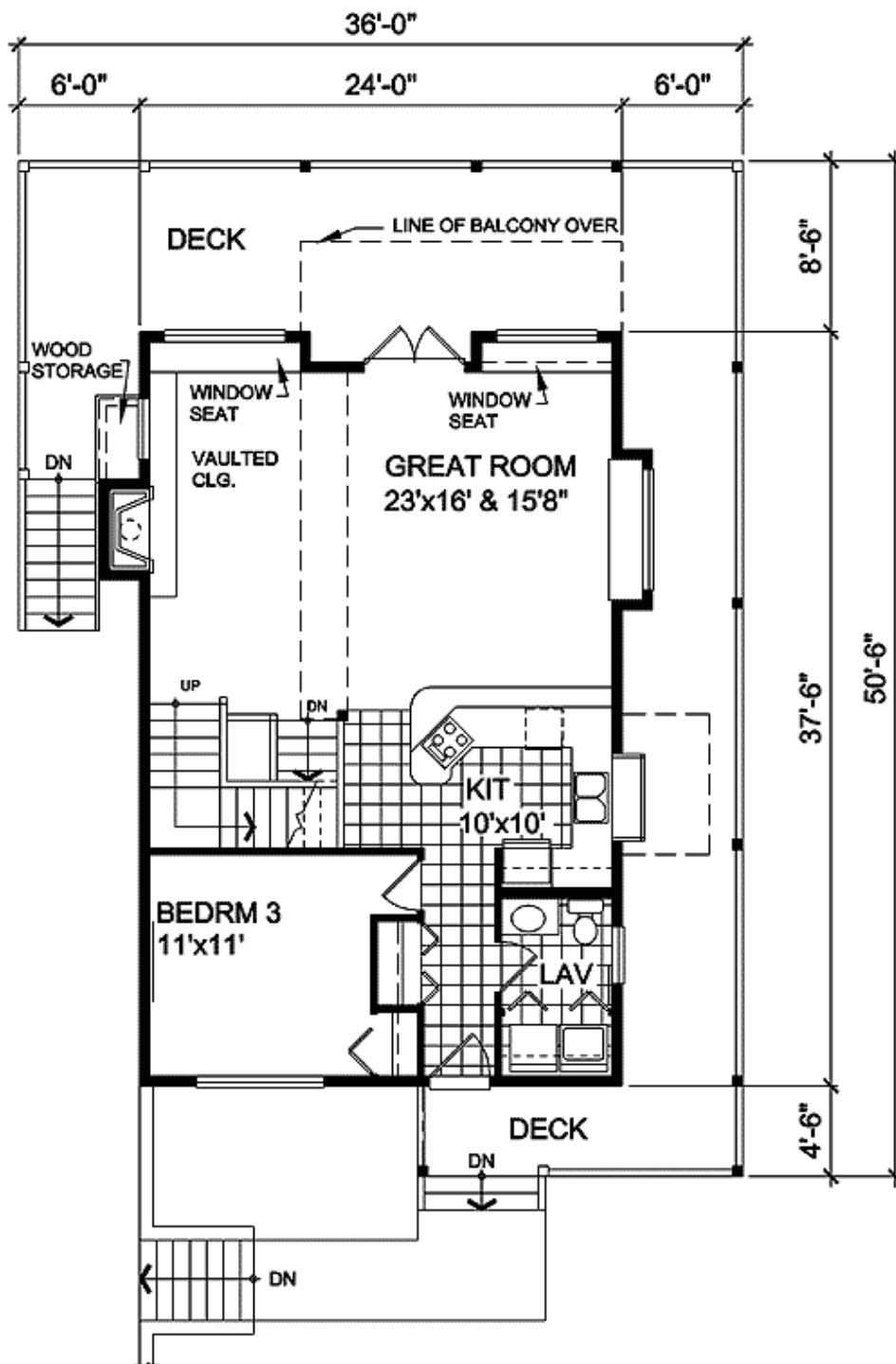
Width: 36'
Depth: 50'6"
Maximum Ridge Height: 25'
Exterior Walls: 2x4
Ceiling Height:
Main Floor: 8'
2nd Floor: 10'
Other: 12' 2nd Floor

Standard Foundations: Daylight, Basement

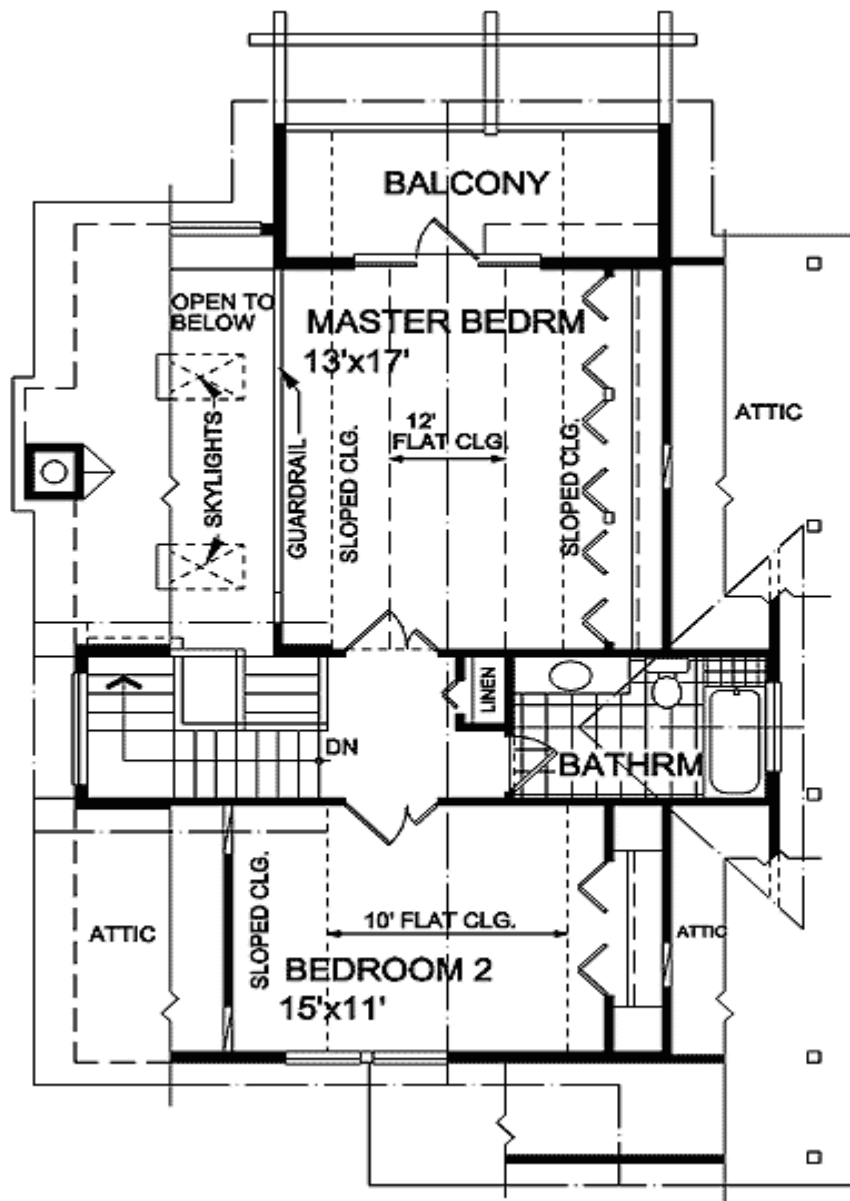
Special Features: Photo Gallery, PDF, Sloping Lot, Narrow Lot, CAD Available, Wrap Around Porch

| | | | | | |
|---------|-----------|------------|--------------|----------|-------|
| One Set | Five Sets | Eight Sets | Reproducible | PDF File | CAD |
| \$450 | \$505 | \$550 | \$670 | \$670 | \$870 |

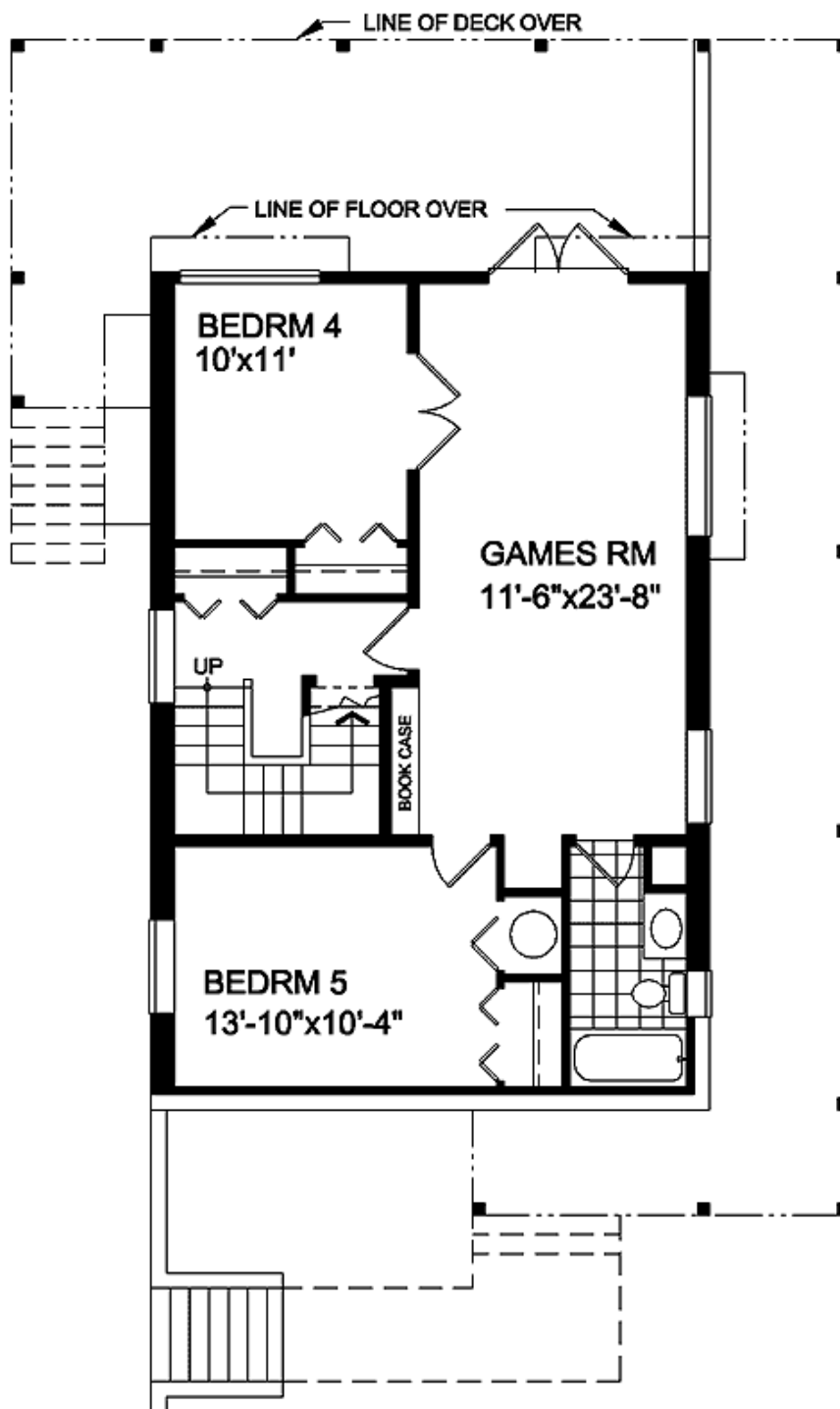
Main Level



2nd Level



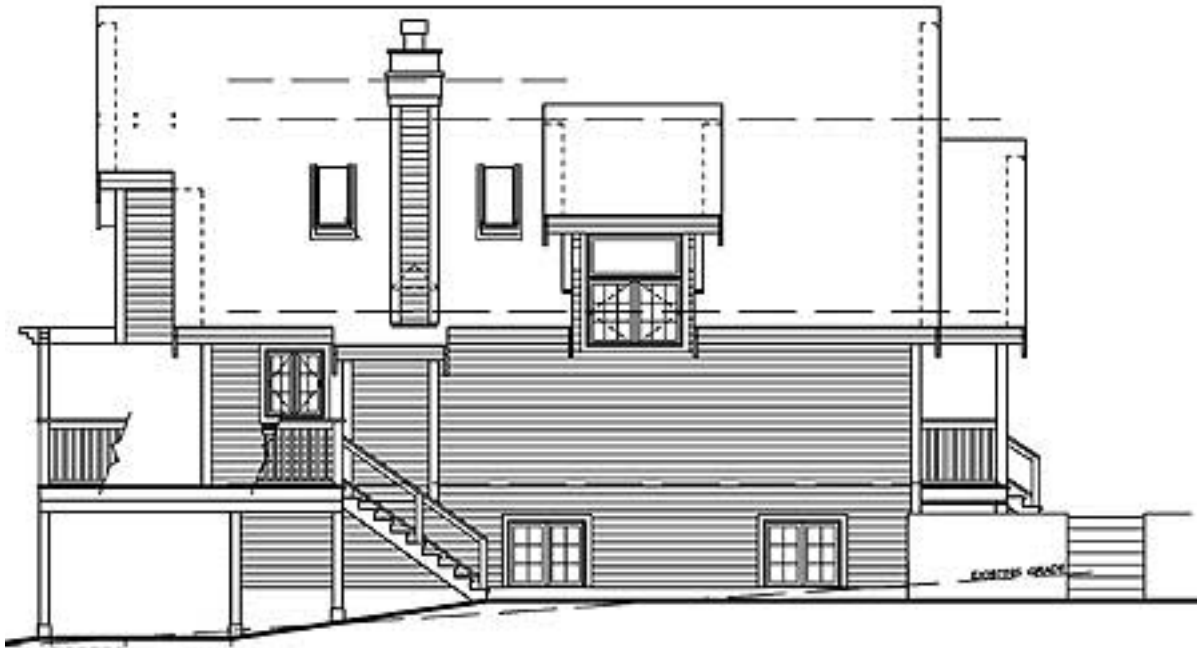
Lower Level



Elevation #2



Left Side



LEFT ELEVATION

Right Side



RIGHT ELEVATION

Rear View



REAR ELEVATION