

Plan W59007ND: Traditional Log Design



House plans are Copyright © 2009 by our architects and designers.

- This traditional log home plan features a familiar full covered porch and a simple, yet refined floor plan. A large great room with fireplace opens into an oversized dining room and adjoining kitchen, making the perfect family space.
- The main level has the master bedroom and additional bedroom with nearby bathroom and hall laundry closet.
- You'll find a wonderful loft area above and huge bathroom with double vanities and large storage closet. The nearby bedroom has a cozy dormer window and creative ceiling heights as well as a much desired walk-in closet. Plenty of attic storage is available for seasonal storage.
- Ceilings: 8' standard.
- Foundation: Basement, Crawl Space, Daylight Basement. Please specify your preference when ordering.

Style: Log, Mountain

Total Living Area: 1725

Main Flr.: 1120

2nd Flr.: 605

Front Porch: 320 sq. ft.

Total Square Feet: 2,045 sq. ft.

Bedrooms: 3

Full Bathrooms: 2

Width: 40'

Depth: 36'

Exterior Walls: Log

Ceiling Height:

Main Floor: 8'

Other: Vaulted Great Room

Standard Foundations: Crawl

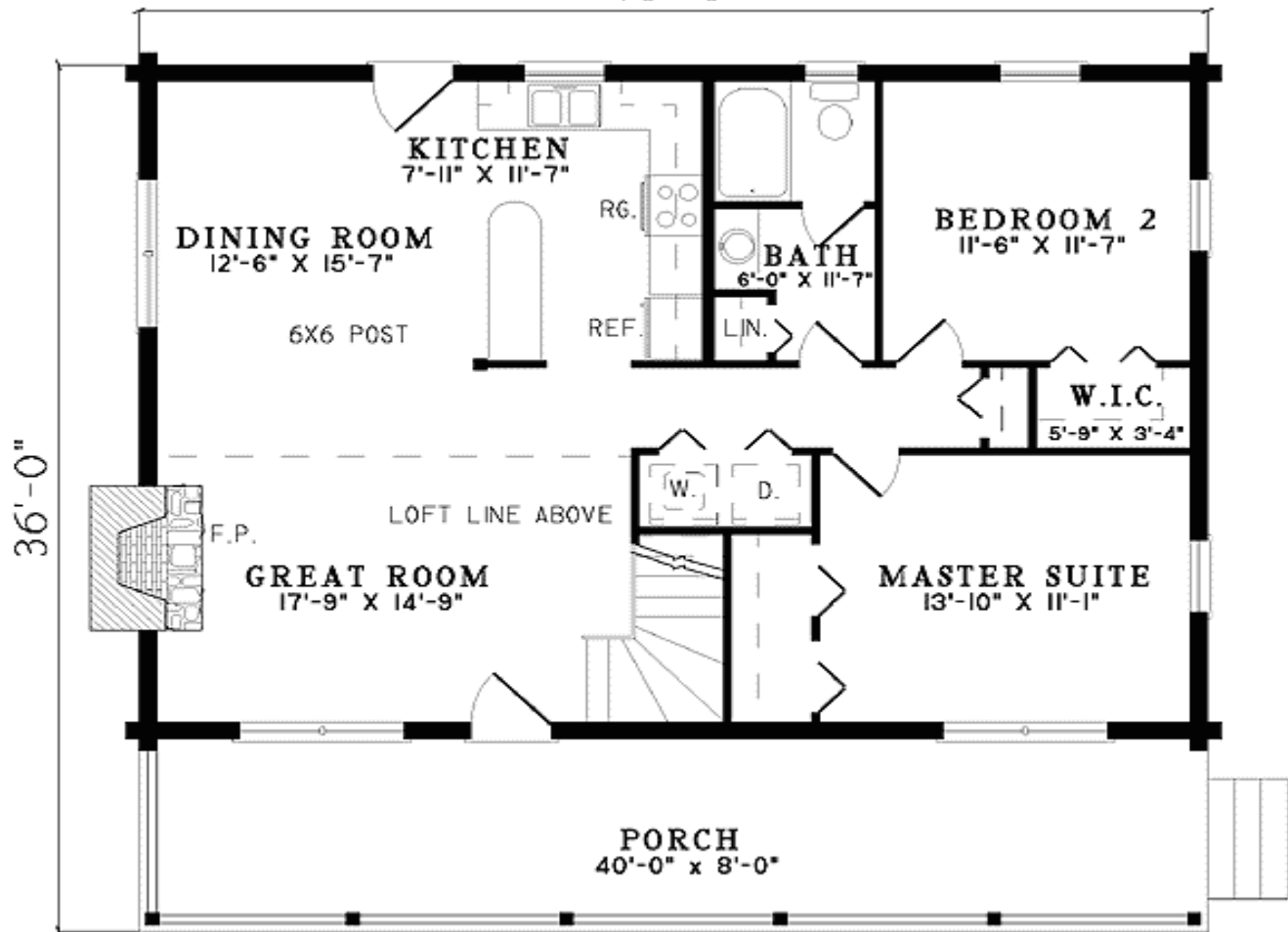
Alternate Foundations: Walkout (\$250), Basement (\$250)

Special Features: PDF, Narrow Lot, 1st Floor Master Suite

One Set	Five Sets	Eight Sets	Reproducible	PDF File	CAD
\$545	\$610	\$640	\$790	\$790	\$1,350

Main Level

40'-0"



2nd Level

