

Plan W31129D: Media Room with Guest Room Options



House plans are Copyright © 2009 by our architects and designers.

- Featured in this one-story home plan, with a covered porch entry and views to the rear, is a well-designed media room which can be converted to an guest suite with ease.
- Off the gallery in front, columns frame the entry to the central great room with its fireplace, high ceiling and access to the breakfast room and the islanded kitchen with its snack bar.
- On the other side of the house, the master suite, also with a sloped ceiling, extends out the back. An oversized walk-in closet, toilet chamber and separate shower and twin sinks make up the master bath.
- Bedrooms two and three share a four-fixture bath.
- A formal dining room, an oversized utility room and a side-entry garage with tool bench complete this well-conceived plan.
- Foundation options: basement, slab or crawl space.
- Related Plans: For an alternate exterior, see house plan 3032D.
- Get a guest suite with house plan 3041D and 3037D.

Style: European, Mediterranean

Total Living Area: 2598

Main Flr.: 2598

Basement Unfinished: 2,598 sq. ft.

Covered Patio: 274 sq. ft.

Total Square Feet: 6,011 sq. ft.

Attached Garage: 2 Car, 541 sq. ft.

Bedrooms: 3

Full Bathrooms: 3

Width: 83'

Depth: 53'7"

Maximum Ridge Height: 22'

Exterior Walls: 2x4

Ceiling Height:

Main Floor: 10'

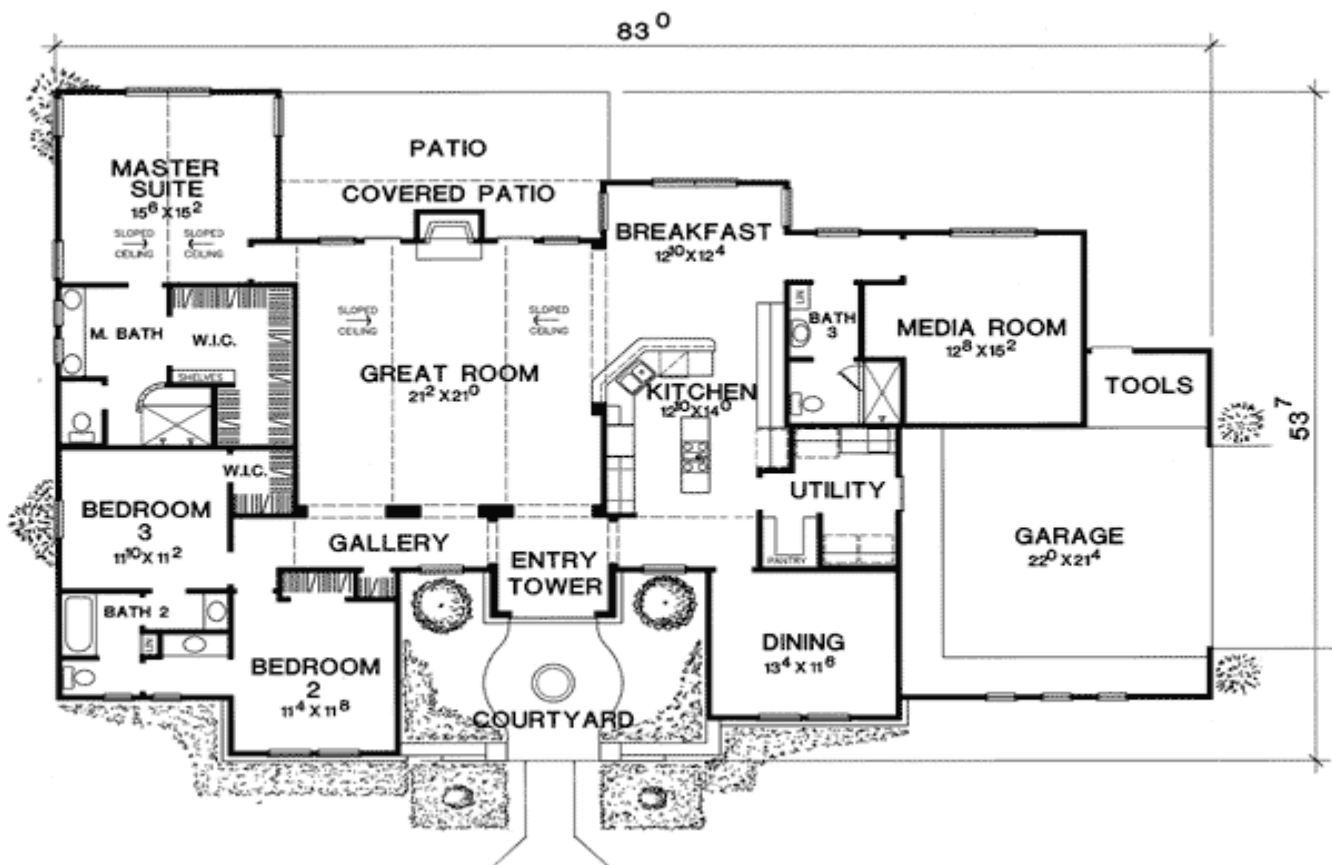
Other: 19'6" Entry; 11' Cathedral MBR; 10'-12'6"" Sloped Great Room

Standard Foundations: Slab, Basement, Crawl

Special Features: Corner Lot, 1st Floor Master Suite, Media-Game-Home Theater, Court Yard, CAD Available, Butler Walk-in Pantry, Photo Gallery

One Set	Five Sets	Eight Sets	Reproducible	CAD
\$665	\$740	\$810	\$995	\$2,270

Main Level



Great Room



Kitchen



Kitchen Vw2

