

Plan W21885DR: An Elevator and a Wrap-Around Porch



House plans are Copyright © 2009 by our architects and designers.

- A sunny railed deck is placed atop the wrap-around porch of this delightful country home plan. The side placement of the garage suits the design to either a wide or corner lot.
- From the entry foyer, one proceeds past the open kitchen with its island and peninsula snack bar to enter the good-sized living room, which directly accesses the porch. A powder room and a laundry room complete the first floor.
- Upstairs, an open area at the top of the stairs can be used as either a den or a fourth bedroom. In the master suite, the walk-through closet accesses a private bath with a walk-in shower, a tub and two sinks bordered by makeup space.
- The remaining bedrooms share a hall bath.
- Related Plans: Remove the elevator with house plan 2118DR. Build in reverse with house plan 21558DR.
- Need more space? See these house plans: 21575DR (garage on right) and 2147DR (garage on left), both 2,687 s.f.; and don't miss 21123DR (3-car garage, 2,992 s.f.).

Style: Canadian, Country, Farmhouse, Metric

Total Living Area: 2528

Main Flr.: 1147

2nd Flr.: 1381

Total Square Feet: 3,031 sq. ft.

Attached Garage: 2 Car, 503 sq. ft.

Bedrooms: 5, 4

Full Bathrooms: 2

Half Bathrooms: 1

Width: 60'8"

Depth: 36'

Maximum Ridge Height: 35'9"

Exterior Walls: 2x6

Ceiling Height:

Main Floor: 9'

2nd Floor: 8'

Other: Vaulted MBR

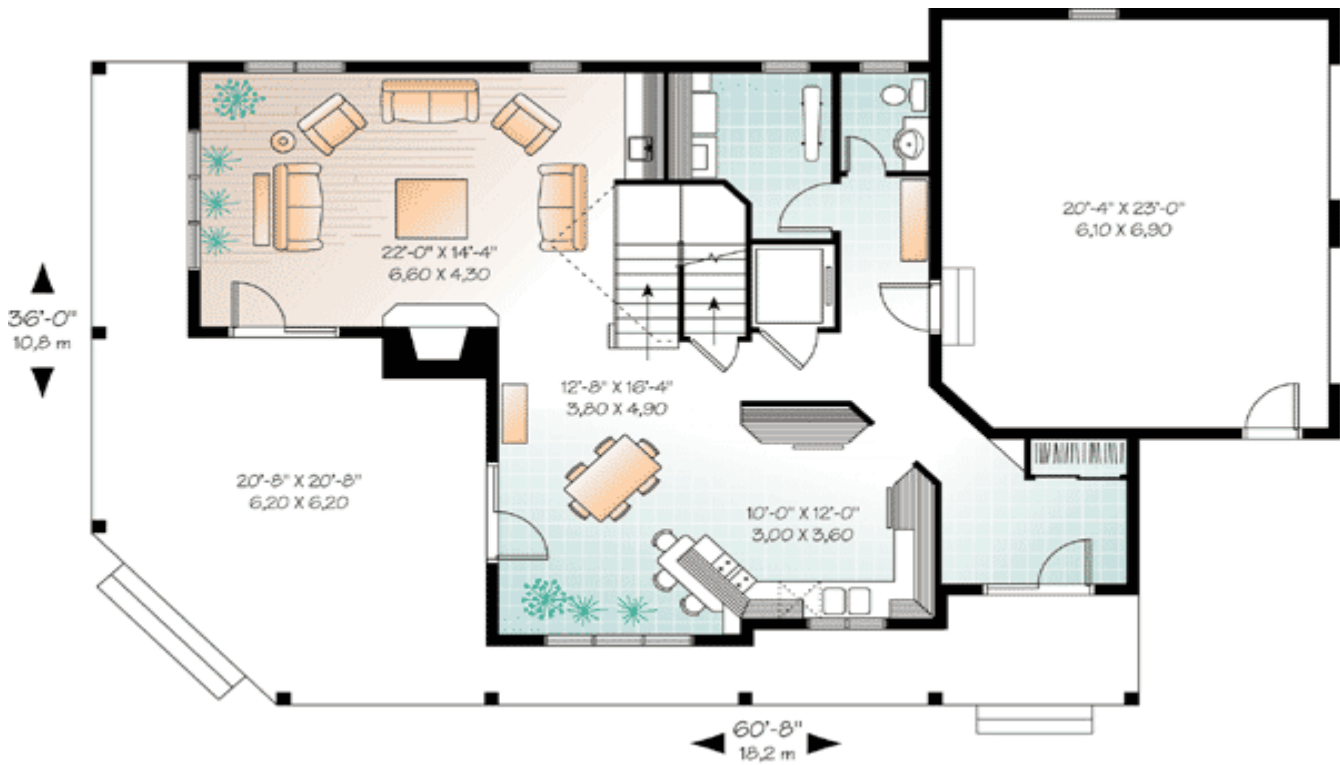
Standard Foundations: Basement

Alternate Foundations: Slab (\$295), Crawl (\$295)

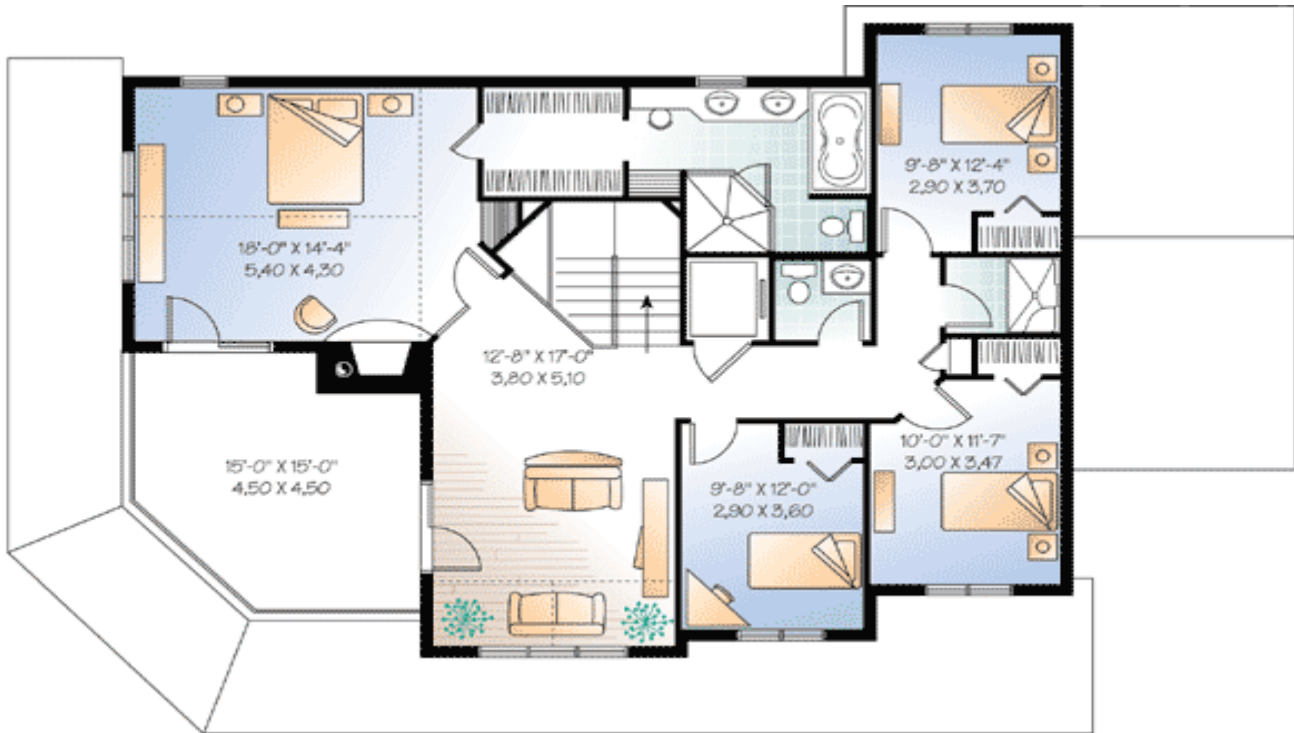
Special Features: PDF, CAD Available, Elevator, Corner Lot, Wrap Around Porch, Den-Office-Library-Study

One Set	Five Sets	Eight Sets	Reproducible	PDF File	CAD
\$749	\$789	\$819	\$999	\$999	\$1,710

Main Level



2nd Level



Rear View



Interior

