

Plan W4709PR: Texas Country Home Plan



House plans are Copyright © 2009 by our architects and designers.

- A fieldstone exterior and a raised-seam metal roof adds a rugged countenance to this home. A shed-roof, anchored by sinewy square posts, protects the front porch and wraps around the house to create the illusion of an encircling verandah.
- Two gable dormers are graced with double-hung windows capped with circle-top glass. The gable and glass detail is repeated on the bathroom window-bay. Other noteworthy design elements include rear first and second floor decks.
- An upper level dormer helps illuminate the entry foyer and a balcony overlooks both the entryway and the living room. The rear of the home is an impressive space comprised of the living room, dining room, and the kitchen. Decorative columns define the boundaries of each space. The living room is bright and airy, illuminated by three rows of windows that extend over twenty-four feet in height. French doors in both the living room and the dining room open to both the rear deck-covered deck areas. There is also a screen porch beyond the fireplace.
- A nine-foot ceiling expands the master bedroom. Features in its sumptuous spa-bath (with vaulted ceiling) include a whirlpool tub situated in the window-bay, a separate shower, and dual vanities. The master bedroom also has sliding doors opening to the screen porch. Upstairs, a bedroom and a loft/bedroom share a full bath. Each room has plenty of closet space and a private deck.
- Ceilings: 9' first floor (25' living room), 8' second floor.

Style: Cottage, Country, Southern

Total Living Area: 2250

Main Flr.: 1525

2nd Flr.: 725

Front Porch: 165 sq. ft.

Deck: 525 sq. ft.

Total Square Feet: 2,250 sq. ft.

Bedrooms: 3

Full Bathrooms: 2

Half Bathrooms: 1

Width: 58'

Depth: 54'8"

Maximum Ridge Height: 27'

Exterior Walls: 2x4

Ceiling Height:

Main Floor: 9'

2nd Floor: 8'

Other: 25' Living Room

Standard Foundations: Basement

Special Features: Den-Office-Library-Study, Loft, Wrap Around Porch, 1st Floor Master Suite, Corner Lot

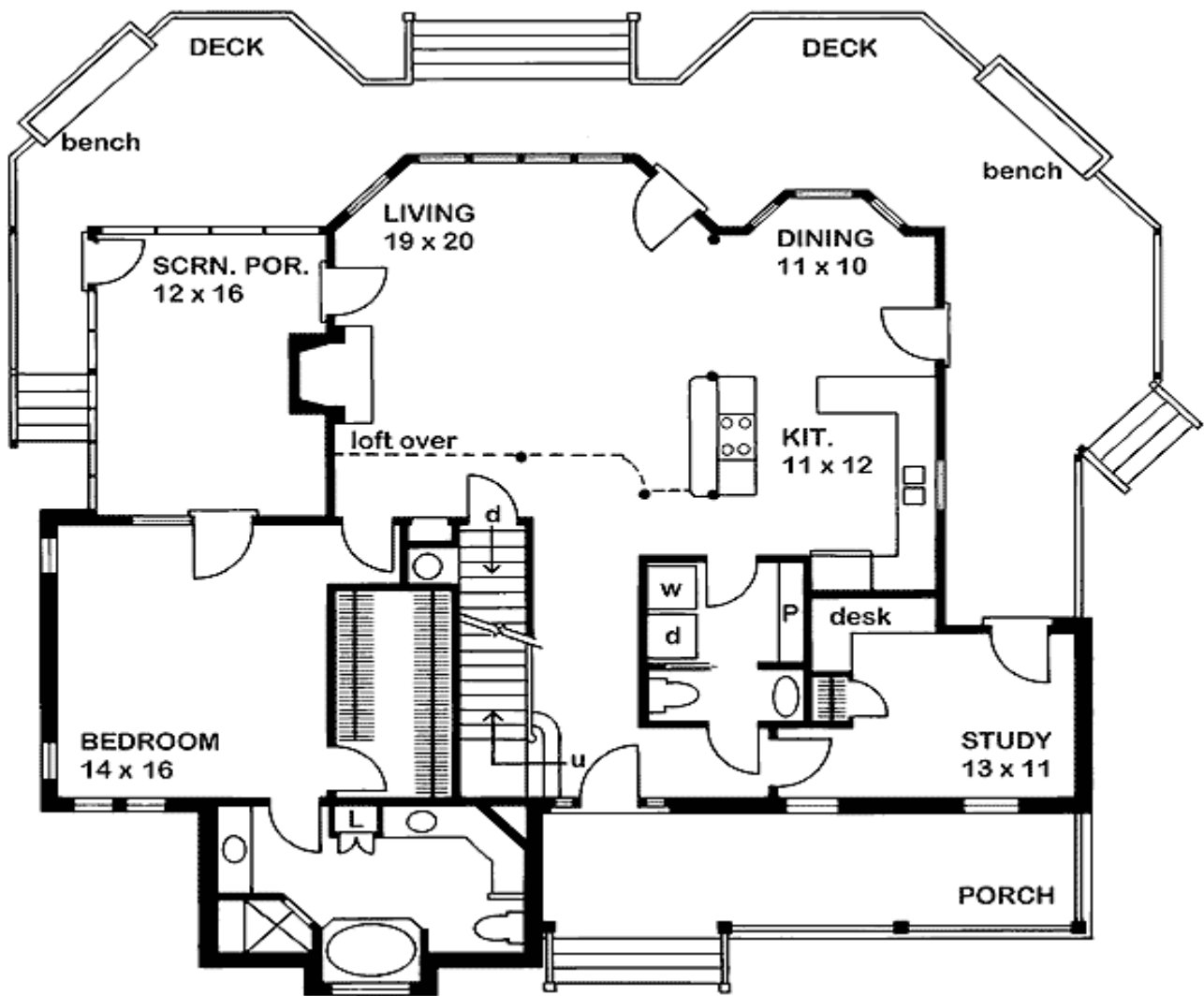
One Set
\$485

Five Sets
\$545

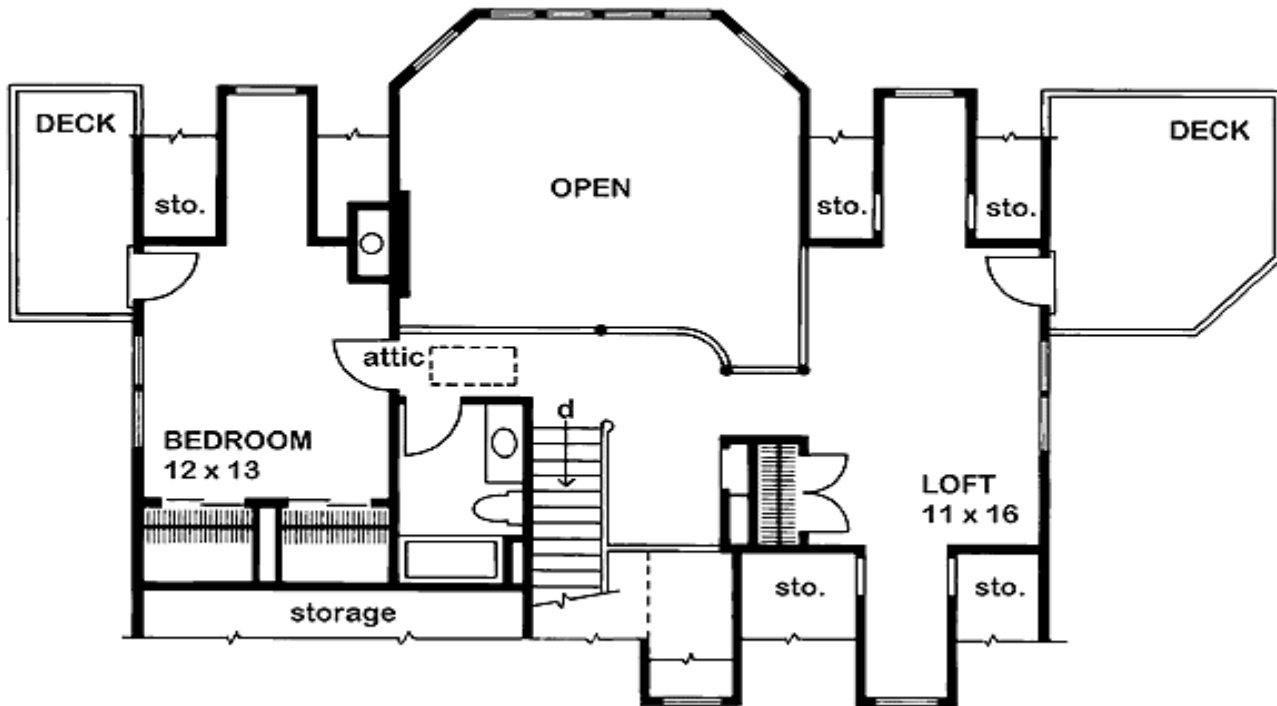
Eight Sets
\$590

Reproducible
\$710

Main Level



2nd Level



Rear View

