

Architectural Designs ...selling quality house plans for over 30 years.

Plan W5921ND: Wonderful Wrap-Around Porch



House plans are Copyright © 2009 by our architects and designers.

- Eight-feet deep, a covered porch wraps around three sides of this country home. In back, a breezeway connects to a covered grilling porch.
- A fireplace graces the great room and columns delineate the dining room. A convenient island bar with a cooktop divides the kitchen from the breakfast area.
- Three secondary bedrooms, one a possible study, share a full bath.
- In the spacious master suite with twin walk-in closets, French doors lead to a deluxe bathroom with a whirlpool tub.
- Upstairs, a huge bonus area would make a terrific game room.
- Related Plans: For an alternate version with two upstairs bedrooms, see house plan 59408ND.
- Get a drive-under garage and an alternate layout with house plan 59511ND.

Style: Country

Total Living Area: 2039

Main Flr.: 2039

Bonus: 1,155 sq. ft.

Porch, Combined: 1,072 sq. ft.

Total Square Feet: 4,750 sq. ft.

Carport Garage: 2 Car, 484 sq. ft.

Bedrooms: 4

Full Bathrooms: 3

Width: 60'6"

Depth: 91'4"

Maximum Ridge Height: 27'4"

Exterior Walls: 2x4

Ceiling Height:

Lower Floor: 9'

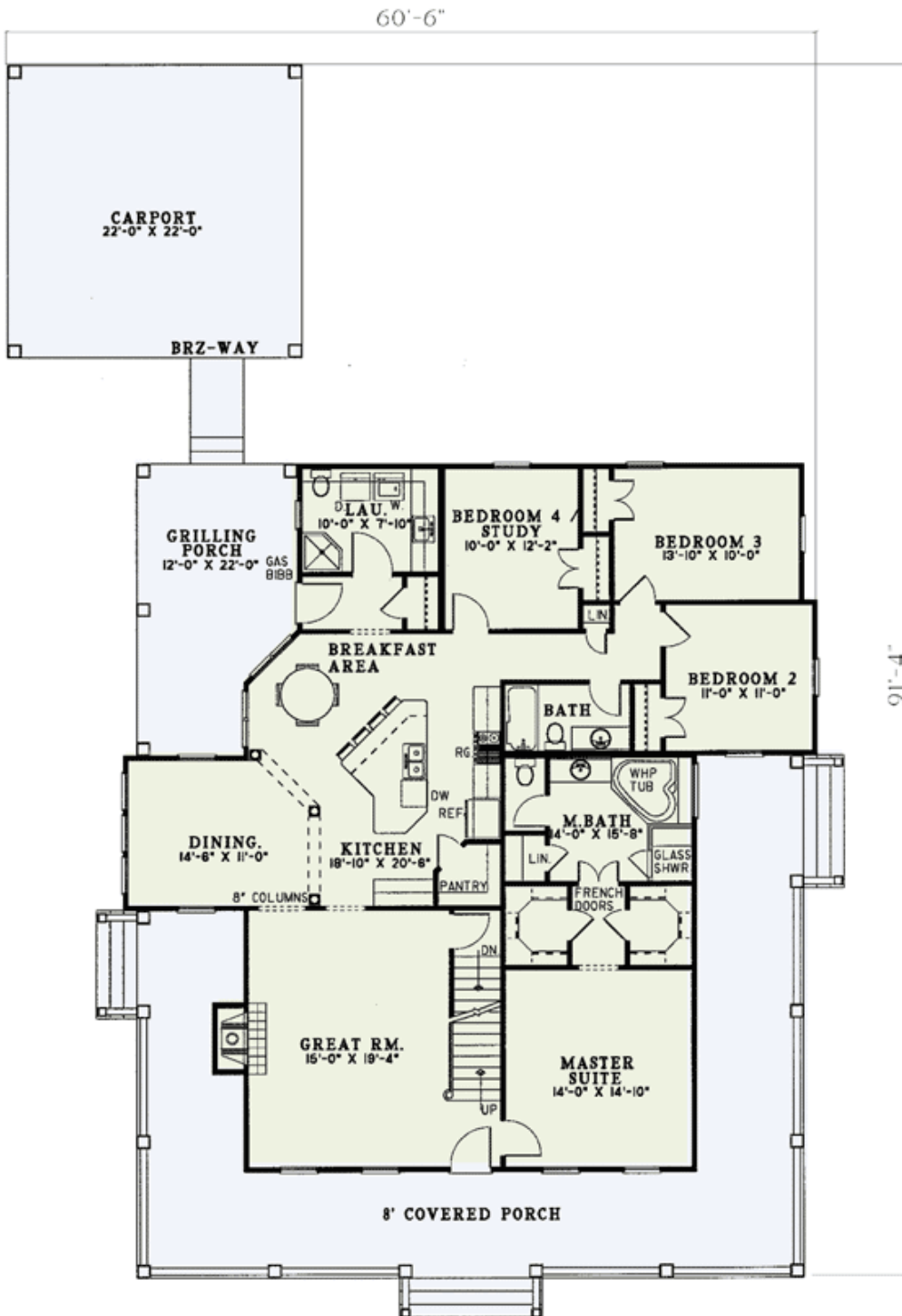
Standard Foundations: Slab, Crawl

Alternate Foundations: Walkout (\$250), Basement (\$250)

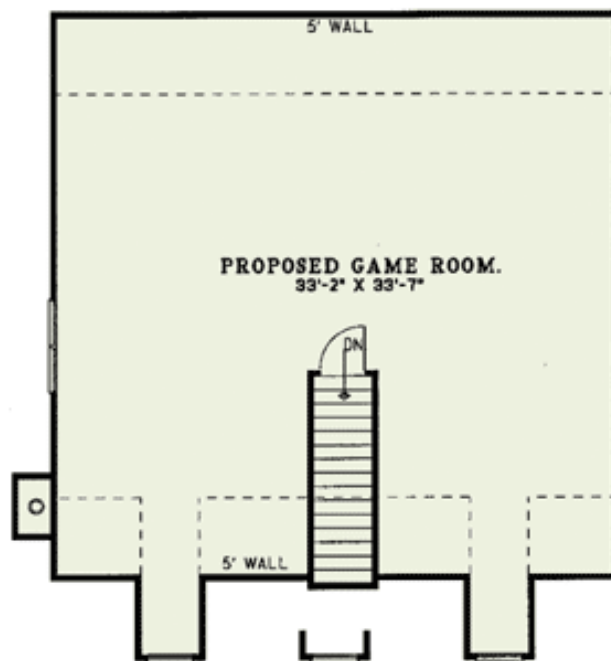
Special Features: PDF, CAD Available, Carport

One Set	Five Sets	Eight Sets	Reproducible	PDF File	CAD
\$605	\$710	\$750	\$970	\$970	\$1,650

Main Level



Bonus



Sides/Rear



REAR ELEVATION



LEFT ELEVATION



RIGHT ELEVATION