

Architectural Designs ...selling quality house plans for over 30 years.

Plan W59331ND: Covered Porch Duplex



House plans are Copyright © 2009 by our architects and designers.

- Picture staring into the warm orange sunset from the covered porch of this home. On those cool autumn evenings, you will be able to sip your cocoa in front of the built-in fireplace in the spacious great room.
- Entertaining will be a breeze with the exquisite dining room with eight inch columns.
- Spending quality time with your family will be heart felt in the convenient kitchen, and hearth room with fireplace and atrium door leading to the grilling porch.
- After the kids are tucked in, you'll find peace in the master suite, or relax in the whirlpool tub.
- Upstairs, you'll have your choice of a third bedroom or maybe a game room with it's own bath and built-in computer desk.

Style: Multi-Family

Total Living Area: 4364

Main Flr.: 1768

2nd Flr.: 414

Front Porch: 313 sq. ft.

Total Square Feet: 5,790 sq. ft.

Attached Garage: 2 Car, 400 sq. ft.

Bedrooms: 3

Full Bathrooms: 3

Width: 84'

Depth: 62'4"

Maximum Ridge Height: 30'2"

Exterior Walls: 2x4

Ceiling Height:

Main Floor: 9'

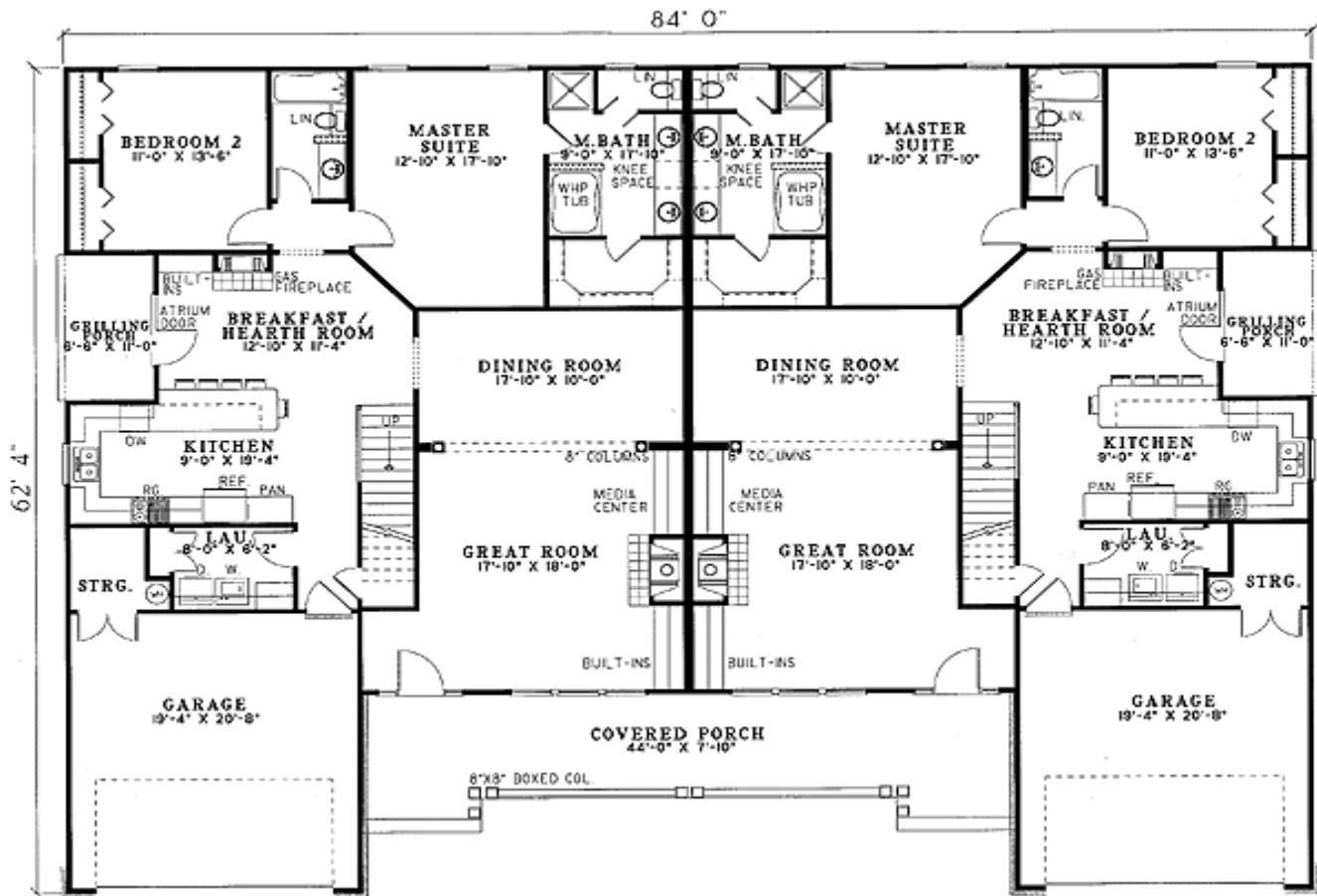
2nd Floor: 8'

Standard Foundations: Combo Basement-Crawl, Slab, Crawl

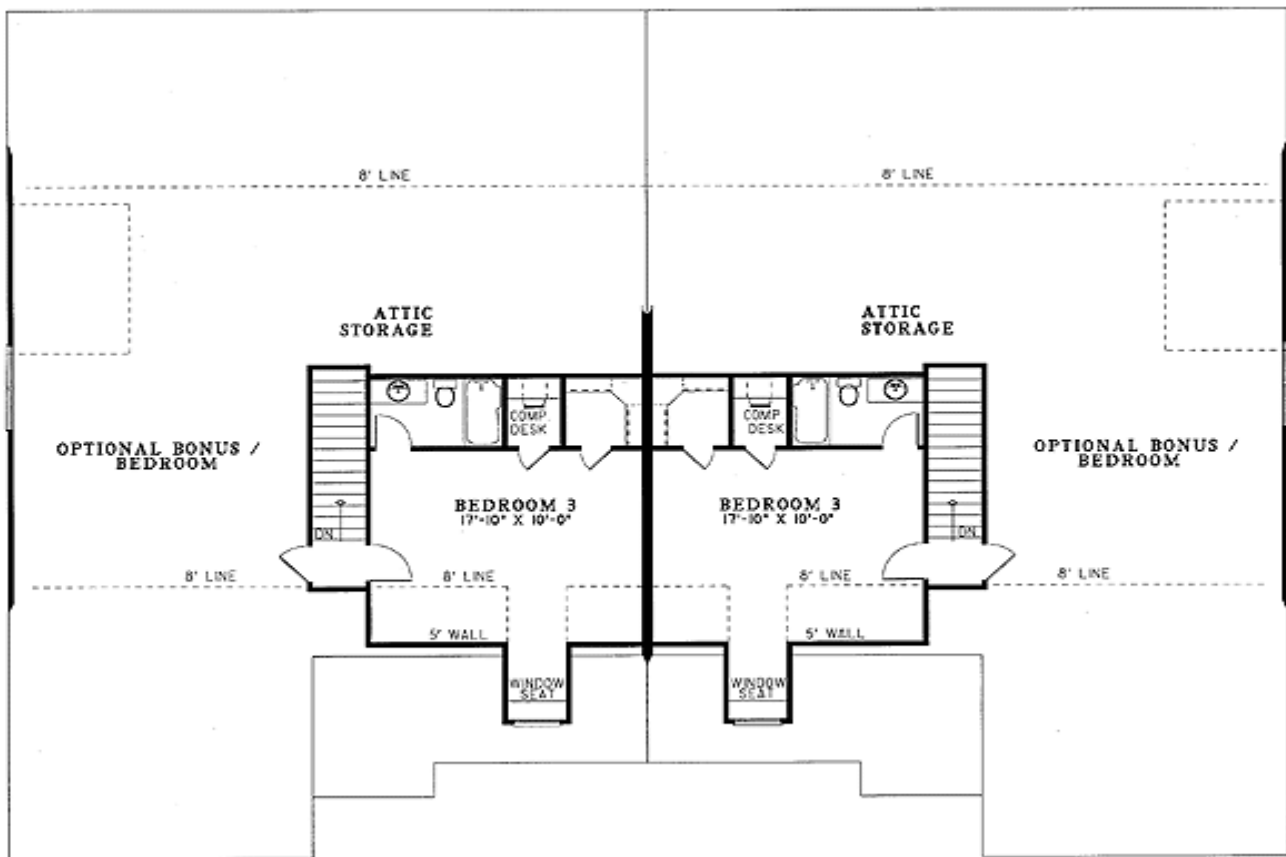
Special Features: PDF, CAD Available

One Set	Five Sets	Eight Sets	Reproducible	PDF File	CAD
\$755	\$970	\$1,050	\$1,400	\$1,400	\$2,400

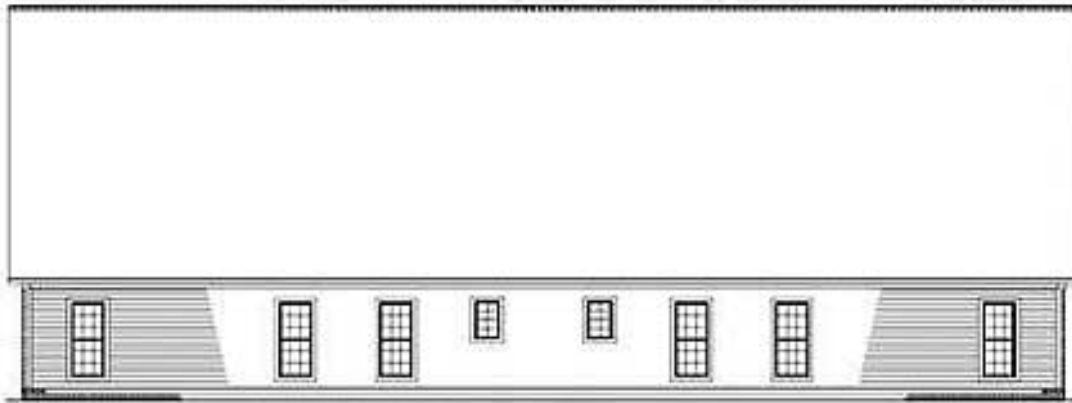
Main Level



2nd Level



Sides/Rear



REAR ELEVATION



LEFT ELEVATION



RIGHT ELEVATION