

# Architectural Designs ...selling quality house plans for over 30 years.

Plan W3073D: Outdoor Living And Entertaining Spaces



House plans are Copyright © 2009 by our architects and designers.

- In the rear of this country home, a covered patio extends to a roomy deck with a spa and built-in seating. In front, a wide porch provides another venue for outdoor living and entertaining. The side-entry garage suits the design to a wide or corner lot.
- The open-plan interior revolves around the central living room with its fireplace. From here, you can view the formal dining room. A long counter with an eating bar and double sinks separates the living room from the islanded kitchen and the bayed morning room.
- A second bay window graces the master suite, where separate his and her walk-in closets are sited. In the compartmented master bath, a corner garden tub is placed between two vanities. The secondary bedrooms share a hall bath.
- Notice the convenient shower in the half bath off the mud room.
- A stairway leads up to generous bonus space.
- Foundation options: basement, slab or crawl space. Specify when ordering.

Style: Country, Farmhouse

Total Living Area: 1994

Main Flr.: 1994

Basement Unfinished: 1,994 sq. ft.

Bonus: 1,316 sq. ft.

Front Porch: 371 sq. ft.

Deck: 495 sq. ft.

Total Square Feet: 6,636 sq. ft.

Attached Garage: 2 Car, 466 sq. ft.

Bedrooms: 3

Full Bathrooms: 2

Half Bathrooms: 1

Width: 70'

Depth: 66'6"

Maximum Ridge Height: 31'

Exterior Walls: 2x4

Ceiling Height:

Main Floor: 9'

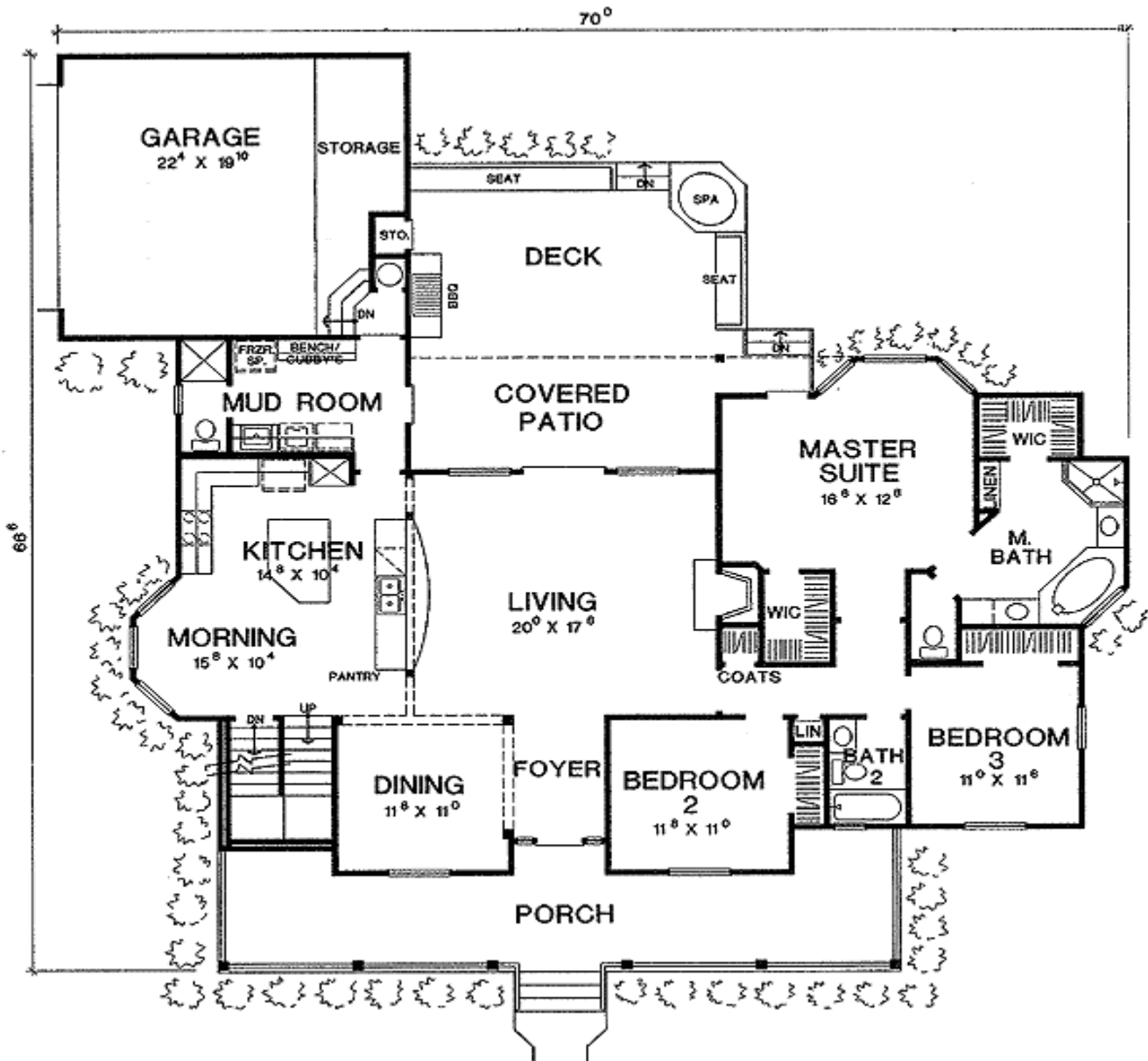
Other: 9' bonus room with 8' dormers

Standard Foundations: Slab, Basement, Crawl

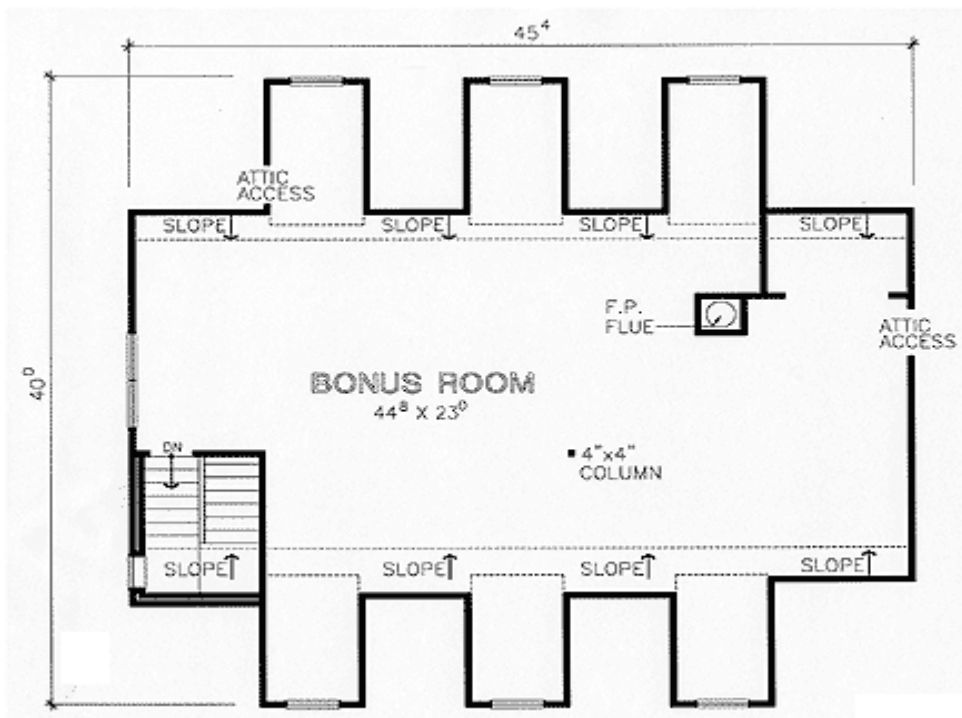
Special Features: Bonus Room, CAD Available, 1st Floor Master Suite, Corner Lot

One Set	Five Sets	Eight Sets	Reproducible	CAD
\$510	\$565	\$620	\$795	\$1,765

## Main Level



## Bonus



Rear View

