

Plan W5032CZ: Splendid Entry



House plans are Copyright © 2009 by our architects and designers.

- The arch over the garage of this traditional abode echoes the arch within the impressive entry. Inside, the stunning two-story foyer with its angled stairway is equally arresting.
- A private study and a formal dining room flank the foyer. In back is the family living area, consisting of a spacious great room, a bright sunroom and a kitchen with a pantry closet and a breakfast bar. Note the home office space off the kitchen and the bookshelves that border the fireplace in the great room.
- On the second floor, the master suite is nicely isolated. The suite contains a marvelous sitting area and a romantic two-way fireplace that warms both the bedroom and the spacious compartmented bath. The bath features his and her vanities, hers next to make-up space, as well as a corner garden tub and a large walk-in closet.
- Two more bedrooms share a hall bath, while the fourth bedroom has direct access to its own bath.
- Foundation: basement.

Style: Traditional

Total Living Area: 2926

Main Flr.: 1447

2nd Flr.: 1479

Total Square Feet: 3,827 sq. ft.

Attached Garage: 3 Car, 901 sq. ft.

Bedrooms: 4

Full Bathrooms: 3

Half Bathrooms: 1

Width: 64'8"

Depth: 47'

Maximum Ridge Height: 30'

Exterior Walls: 2x4

Optional Exterior Walls: 2x6 \$150

Ceiling Height:

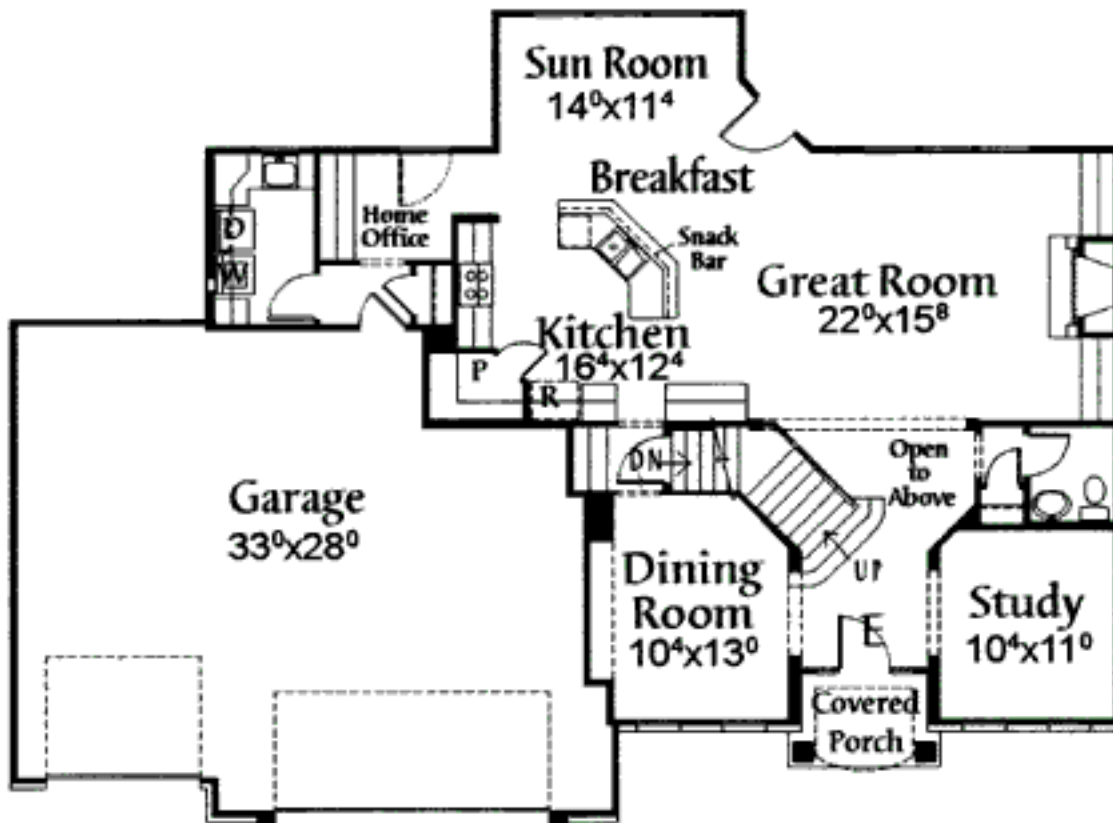
Standard Foundations: Basement

Alternate Foundations: Slab (\$300), Crawl (\$200)

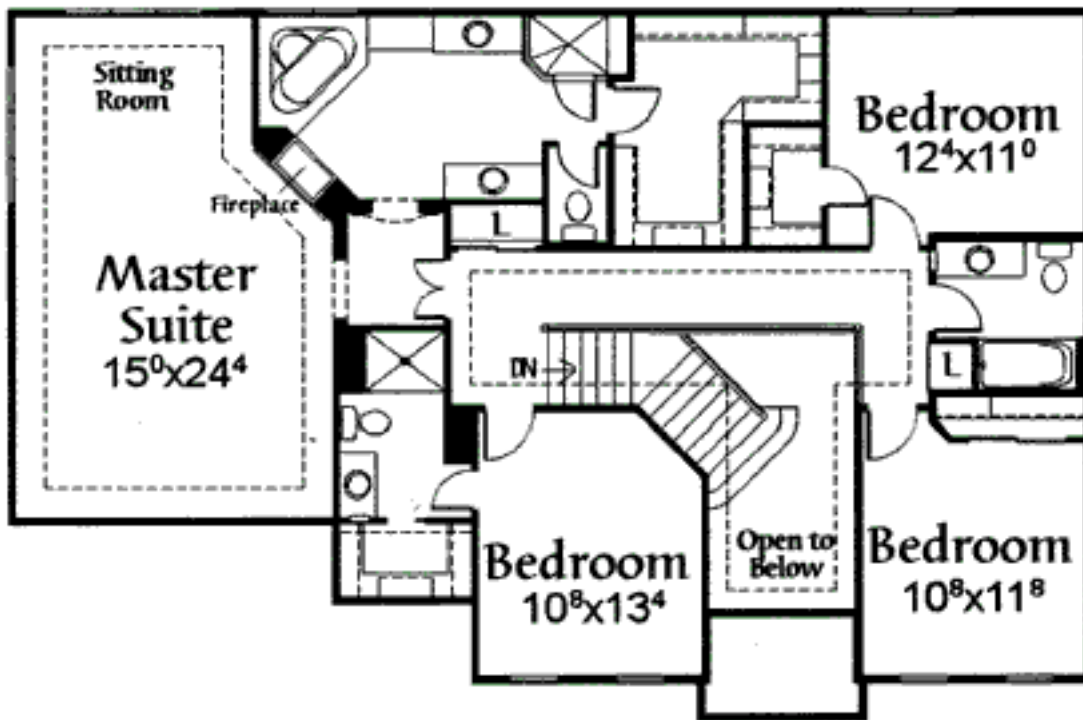
Special Features: CAD Available

One Set	Five Sets	Eight Sets	Reproducible	CAD
\$745	\$895	\$985	\$895	\$2,500

## Main Level



2nd Level



Rear View

